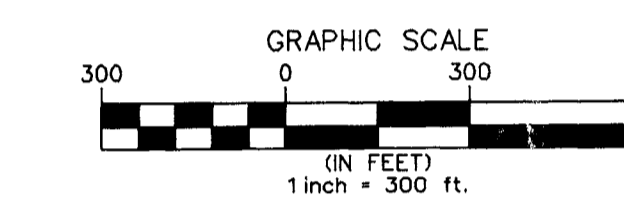
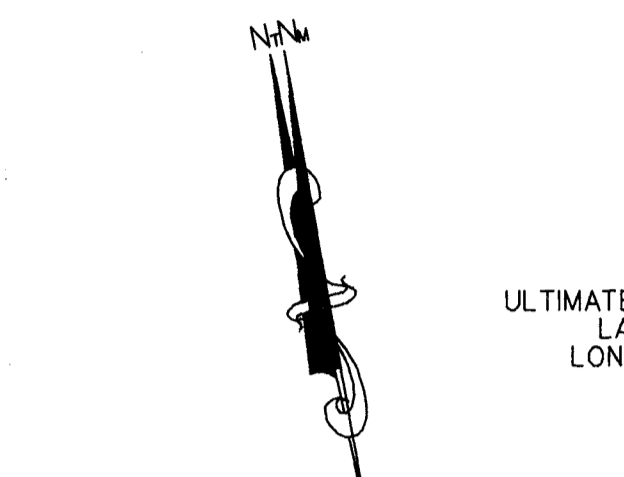


HOLDING POSITION TABLE		
HOLDING POSITION	HOLD TYPE	DISTANCE
HL 1	RUNWAY	200'
HL 2	RUNWAY	200'
HL 3	RUNWAY	200'
HL 4		

NOTE: THE DISTANCE FROM THE HOLD LINE IS MEASURED PERPENDICULAR FROM THE RUNWAY CENTERLINE.



RUNWAY 10 20:1 EXISTING/ULTIMATE APPROACH SLOPE

ULTIMATE REMOVAL OF CONNECTING TAXIWAY

EXISTING/ULTIMATE APPROACH SURFACE

35' BRL/ULTIMATE P

EXISTING/ULTIMATE APPROACH SURFACE

35' BRL/ULTIMATE P

EXISTING/ULTIMATE APPROACH SURFACE

35' BRL/ULTIMATE P

EXISTING/ULTIMATE APPROACH SURFACE

35' BRL/ULTIMATE P

EXISTING/ULTIMATE APPROACH SURFACE

35' BRL/ULTIMATE P

EXISTING/ULTIMATE APPROACH SURFACE

35' BRL/ULTIMATE P

EXISTING/ULTIMATE APPROACH SURFACE

35' BRL/ULTIMATE P

EXISTING/ULTIMATE APPROACH SURFACE

35' BRL/ULTIMATE P

EXISTING/ULTIMATE APPROACH SURFACE

35' BRL/ULTIMATE P

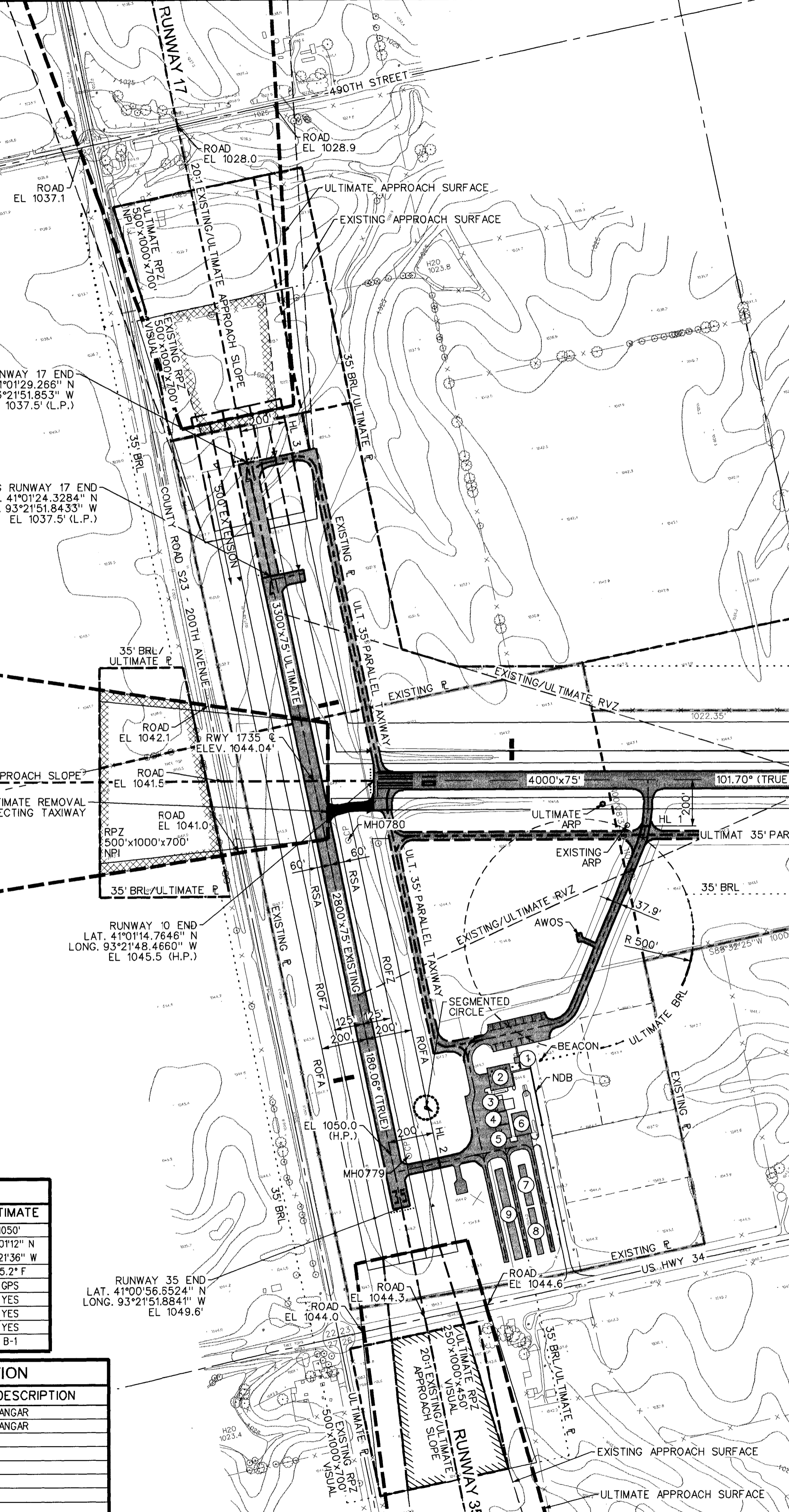
EXISTING/ULTIMATE APPROACH SURFACE

35' BRL/ULTIMATE P

EXISTING/ULTIMATE APPROACH SURFACE

35' BRL/ULTIMATE P

EXISTING/ULTIMATE APPROACH SURFACE



LEGEND		
DESCRIPTION	EXISTING	ULTIMATE
AIRPORT PROPERTY LINE	---	---
AIRPORT EASEMENT LINE	---	---
BUILDING RESTRICTION LINE	---	---
RUNWAY VISIBILITY ZONE / LINE OF SIGHT	---	---
RUNWAY PROTECTION ZONE	---	---
EASEMENT	---	---
RUNWAY SAFETY AREA AND OBJECT FREE AREA	---	---
BUILDING - STRUCTURES	---	---
PRECISION APPROACH PATH INDICATOR (PAPI)	---	---
RUNWAY END IDENTIFIER LIGHTS (REIL)	---	---
THRESHOLD LIGHTS	---	---
FENCE	---	---
PAVEMENT REMOVAL	---	---
TIEDOWN	---	---

NOTES
 THERE ARE NO OBSTACLE FREE ZONE (OFZ) PENETRATIONS
 THERE ARE NO THRESHOLD SITING SURFACE OBJECT PENETRATIONS
 THERE ARE NO MODIFICATIONS TO DESIGN STANDARDS

RUNWAY END COORDINATES - NAD 83								
	RUNWAY 10		RUNWAY 28		RUNWAY 17		RUNWAY 35	
	EXISTING	ULTIMATE	EXISTING	ULTIMATE	EXISTING	ULTIMATE	EXISTING	ULTIMATE
LATITUDE	41°01'14.7648" N	41°01'14.7648" N	41°01'06.7375" N	41°01'06.7375" N	41°01'24.3184" N	41°01'24.3184" N	41°00'56.6524" N	41°00'56.6524" N
LONGITUDE	93°21'48.4660" W	93°21'48.4660" W	93°20'57.3647" W	93°20'57.3647" W	93°21'51.8433" W	93°21'51.8433" W	93°21'51.8841" W	93°21'51.8841" W

RUNWAY DATA TABLE				
ITEM	RUNWAY 10/28		RUNWAY 17/35	
	EXISTING	ULTIMATE	EXISTING	ULTIMATE
APPROACH CATEGORY - DESIGN GROUP	B-I	B-II	B-I	B-I
RUNWAY LENGTH x WIDTH	4000x75'	4000x75'	2800x75'	3300x75'
MAXIMUM ELEVATION ABOVE MSL	1045.8'	1045.8'	1050.0'	1050.0'
RUNWAY MARKINGS	NPI	NPI	NPI	NPI
RUNWAY LIGHTING	MRL	MRL	MRL	MRL
PAVEMENT MATERIAL	PCC	PCC	PCC	PCC
PAVEMENT STRENGTH (000)	12.5 SW	12.5 SW	12.5 SW	12.5 SW
RUNWAY SAFETY AREA (RSA) LENGTH x WIDTH	4600x150'	4600x150'	3280x120'	3780x120'
RUNWAY OBJECT FREE AREA (ROFA) LENGTH x WIDTH	4600x500'	4600x500'	3280x400'	3780x400'
RUNWAY OBSTACLE FREE ZONE (ROFZ) LENGTH x WIDTH	4400x250'	4400x250'	3200x250'	3700x250'
TAXIWAY WIDTH	35'	35'	35'	35'
TAXIWAY LIGHTING	MTL	MTL	MTL	MTL
	10	28	10	28
	17	35	17	35
APPROACH TYPE	A(NP)	A(V)	A(NP)	A(V)
APPROACH SURFACE SLOPE	20:1	20:1	20:1	20:1
PERCENT EFFECTIVE GRADIENT	-0.3%	+0.3%	-0.3%	+0.3%
ELECTRONIC AIDS	GPS	NONE	GPS	NONE
VISUAL APPROACH AIDS	VASI	PAPI	PAPI	PAPI
APPROACH VISIBILITY MINIMUMS	1-MILE	1-MILE	1-MILE	1-MILE
TOUCHDOWN ZONE ELEVATION	1045.8'	1045.8'	1045.8'	1045.8'
	1045.8'	1045.8'	1050.0	1050.0
	1049.8	1049.8	1049.8	1050.0

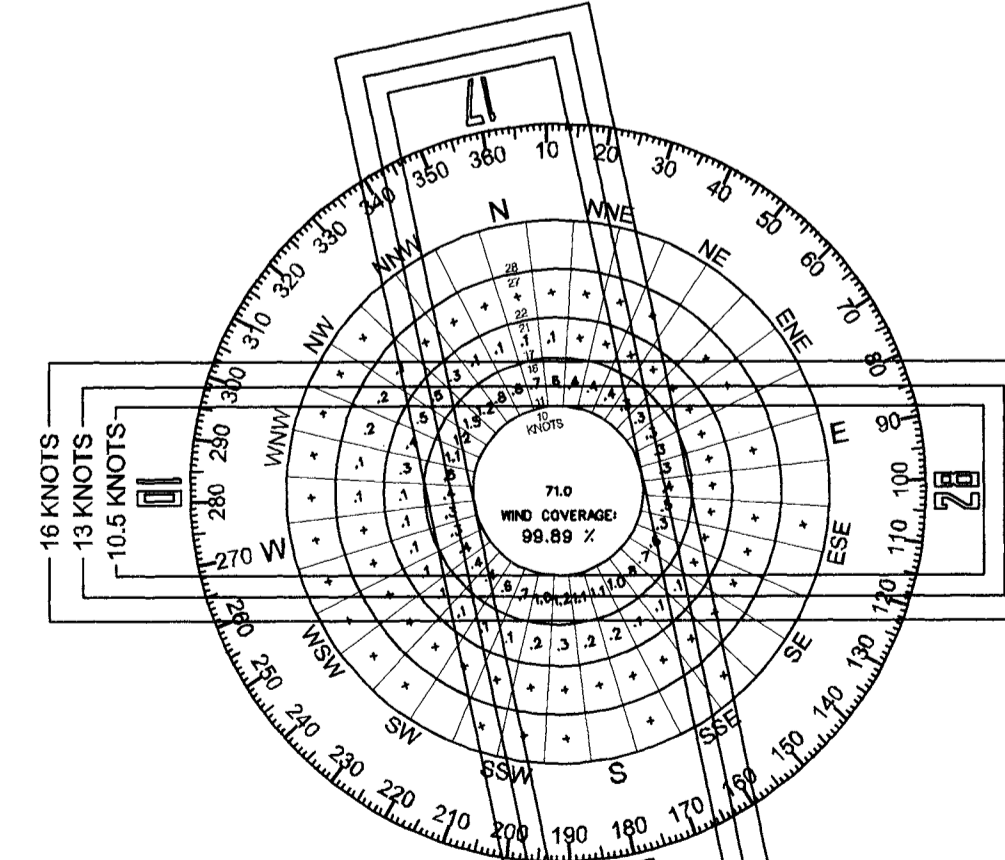
CONDITIONAL APPROVAL
 The approval indicated by my signature is given subject to the condition that the items identified in our approval letter dated July 2, 2012, may not be undertaken without prior written environmental approval by the Federal Aviation Administration. This approval action does not imply any commitment for Federal funding, or approval of future structures requiring notice under FAR Part 77.
 [Signature]
 Airport Planning Engineer
 FAA Central Region
 7/2/12
 Date

AIRPORT DATA - NAVD 88		
ITEM	EXISTING	ULTIMATE
AIRPORT ELEVATION (MSL)	1050'	1050'
AIRPORT REFERENCE POINT (ARP)	41°01'11" N 93°21'35" W	41°01'12" N 93°21'36" W
MEAN MAX. TEMPERATURE	85.2° F	85.2° F
AIRPORT NAV AIDS	GPS, NDB	GPS
ROTATING BEACON	YES	YES
SEGMENTED CIRCLE	YES	YES
LIGHTED WIND INDICATOR	YES	YES
AIRPORT REFERENCE CODE	B-1	B-1

BUILDING IDENTIFICATION			
I.D.	DESCRIPTION	I.D.	DESCRIPTION
1	TERMINAL BUILDING	8	TEE HANGAR
2	FBO FACILITY	9	TEE HANGAR
3	CONVENTIONAL HANGAR		
4	CONVENTIONAL HANGAR		
5	CONVENTIONAL HANGAR		
6	CONVENTIONAL HANGAR		
7	TEE HANGAR		

REVISION BLOCK NUMBER	DATE	DESCRIPTION

SURVEY CONTROL AND RUNWAY DOCUMENTATION			
PID	WGS84 COORDINATES (NAD83) DEGREES MINUTES SECONDS LATITUDE LONGITUDE	NAVD 88 DATUM: US SURVEY FEET ELEVATION	DESCRIPTION
MH0780	41°01'12.50917" N 93°21'50.60150" W	1044.7'	THE STATION, CHAIRPORT PAGES, IS A PUNCH MK TOP OF S. STL ROD, ENCASED IN A 5-INCH PVC PIPE WITH LOGO CAP, SURROUNDED BY CONCRETE. LOCATED AT CHARITON MUNI ARP, 139.8' S & TWY, 96.8' E OF & RWY, 15.7' E OF SE COR VASI BASE, 2.3' N OF WITNESS POST W/ SURVEY SIGN.
MH0779	41°00'58.74199" N 93°21'50.87524" W	1050'	THE STATION, CHAIRPORT, IS A PUNCH MK TOP OF S. STL ROD, ENCASED IN A 5-INCH PVC PIPE WITH LOGO CAP, SURROUNDED BY CONCRETE. LOCATED AT CHARITON MUNI ARP, 77.4' E OF & RWY, 57.1' E OF & RAMP, 6.6' NE OF MH COVER, 6.1' NE OF WITNESS POST W/ SURVEY SIGN.



1. ALL COORDINATES AND ELEVATIONS USE NAD 83 AND NAVD 88.
 2. RUNWAY 17/35 MAGNETIC BEARING OF 178.71° DENOTES RUNWAY 18/36.

PROJECT: CHARITON MUNICIPAL AIRPORT
 AIRPORT LAYOUT DRAWING
 SNYDER & ASSOCIATES
 2727 S.W. SNYDER BLVD.
 ANKENY, IOWA 50023
 515-964-2020
 PLN: CMW
 CK: JLS
 DR: RRD
 DATE: 10-2009
 PROJECT NO.: 108.0440
 SHEET: D-3155
 OF 11