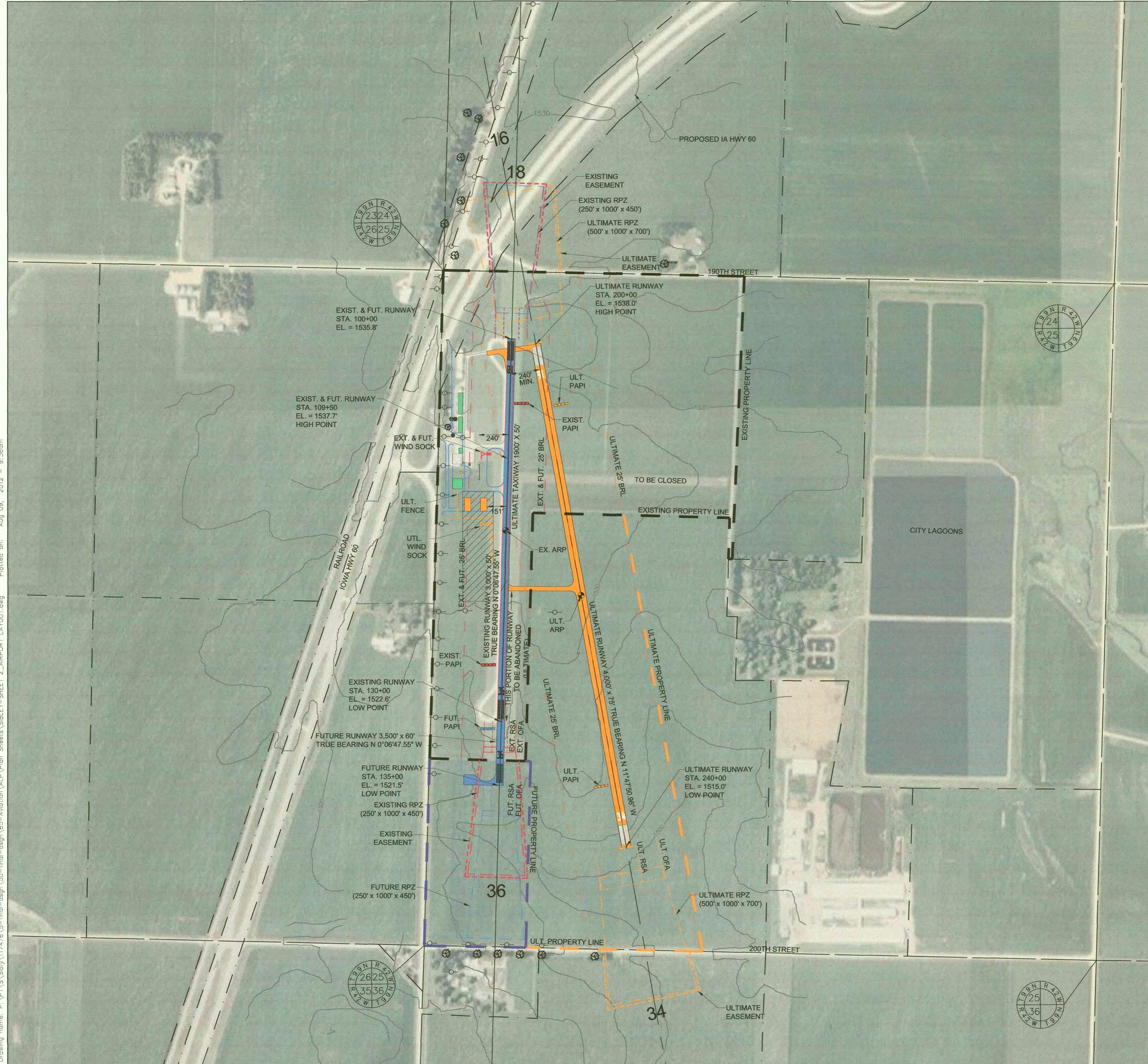


Drawing name: P:\PT\1\Sibyl\117476\5-final-dsgn\50-final-dsgn\65-Aviation\AIP\Plan Sheets\SIBLEY-SHEETS 2-AIRPORT LAYOUT.dwg
 Plotted on: Aug 09, 2012 - 9:36am



RUNWAY DATA TABLE			
	RUNWAY 18/36	RUNWAY 18/36	RUNWAY 16/34
	EXISTING	FUTURE	ULTIMATE
RUNWAY LENGTH & WIDTH	3,000' x 50'	3,500' x 60'	4,000' x 75'
RUNWAY APPROACH	VISUAL	VISUAL	NPI > 1 MILE
RUNWAY GRADIENT	0.50%	0.50%	0.58%
PAVEMENT TYPE	PAVED	PAVED	PAVED
PAVEMENT STRENGTH	SMALL AIRPLANES	SMALL AIRPLANES	12,500 SWL
RUNWAY LIGHTING	LIRL	LIRL	MIRL
RUNWAY MARKING	NON-PRECISION	NON-PRECISION	NON-PRECISION
RUNWAY NAVAIDS	PAPI	PAPI	PAPI, REIL
DESIGN APPROACH SLOPE	20:1	20:1	20:1

RUNWAY PROTECTION ZONE			
DIMENSIONS			
RUNWAY	BASE	LENGTH	OUTER WIDTH
EXISTING 18/36	250'	1000'	450'
FUTURE 18/36	250'	1000'	450'
ULTIMATE 16/34	500'	1000'	700'

RUNWAY SAFETY AREA				
RUNWAY	WIDTH	LENGTH BEYOND RUNWAY END		
EXISTING	18/36	120'	240'	
FUTURE	18/36	120'	240'	
ULTIMATE	16/34	150'	300'	

RUNWAY OBJECT FREE AREA				
RUNWAY	WIDTH	LENGTH BEYOND RUNWAY END		
EXISTING	18/36	250'	240'	
FUTURE	18/36	250'	240'	
ULTIMATE	16/34	500'	300'	

RUNWAY END STATION AND ELEVATION					
RUNWAY	STATION	ELEVATION	RUNWAY	STATION	ELEVATION
EXISTING	18	100+00	36	130+00	1522.6'
FUTURE	18	100+00	36	135+00	1520.1'
ULTIMATE	16	200+00	34	240+00	1515.0'

TOUCHDOWN ZONE ELEVATIONS				
RUNWAY	3000' STATION	STATION LOCATION	ELEVATION	
EXISTING	18	100+00 to 130+00	109+50	1537.7'
	36	130+00 to 100+00	109+50	1537.7'
FUTURE	18	100+00 to 130+00	109+50	1537.7'
	36	135+00 to 105+00	109+50	1537.7'
ULTIMATE	16	200+00 to 230+00	200+00	1538.0'
	34	240+00 to 210+00	210+00	1535.0'

AIRPORT REFERENCE POINT	
LATITUDE	ULTIMATE 43°22'04.80"N
LONGITUDE	ULTIMATE 95°45'26.50"W

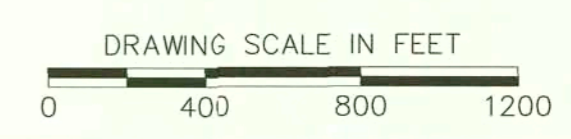
DEVIATION FROM FAA DESIGN STANDARDS			
APPROVAL DATE	CASE NUMBER	MODIFICATION	DESCRIPTION
NONE IDENTIFIED			

OBSTACLE FREE ZONE (OFZ) OBJECT PENETRATIONS			
KEY	DESCRIPTION	PENETRATION	ELEVATION
	NONE IDENTIFIED		

THRESHOLD SITING SURFACE OBJECT PENETRATION			
KEY	DESCRIPTION	PENETRATION	ELEVATION
	REFER TO APPROACH SHEETS 4,5,6 AND 7		

NOTE: HORIZONTAL DATUM = NAD 83
 VERTICAL DATUM = NAVD 88 MSL

LEGEND			
EXISTING	FUTURE	ULTIMATE	
---	---	---	FEE PROPERTY
---	---	---	EASEMENT PROPERTY
---	---	---	PAVEMENT
---	---	---	HANGARS
---	---	---	AIRPORT REFERENCE POINT (ARP)
---	---	---	LIGHTED WIND CONE
---	---	---	PAPI
---	---	---	FAA RUNWAY PROTECTION ZONE (RPZ)
---	---	---	RUNWAY OBJECT FREE AREA (OFA)
---	---	---	BUILDING RESTRICTION LINE (BRL)
---	---	---	FUEL SYSTEM
---	---	---	FENCE
---	---	---	GROUND CONTOURS



401 EAST 8TH STREET
 SIOUX FALLS, SD 57103
 PHONE: 605.330.7000
 FAX: 605.330.7001
 www.sehinc.com



I HEREBY CERTIFY THAT THIS PLAN, SPECIFICATION, OR REPORT WAS PREPARED BY ME OR UNDER MY DIRECT SUPERVISION AND THAT I AM A LICENSED PROFESSIONAL ENGINEER UNDER THE LAWS OF THE STATE OF SOUTH DAKOTA.
 Steve Robinson, P.E.
 DATE: 8/22/12 LICENSE NO.: 11630

AIRPORT LAYOUT PLAN
 FOR THE SIBLEY
 MUNICIPAL AIRPORT

UPDATE TO ADD
 FUTURE EXTENSION ON
 EXISTING ALIGNMENT

NO. DATE DESCRIPTION REVISIONS

1. 12/2011

SEH FILE NO. SIBLY 117476
 ISSUE DATE: SEPT 17, 2007
 DESIGNED BY: BM
 DRAWN BY: KP

AIRPORT LAYOUT
 DRAWING

SHEET
 2
 OF 11 SHEETS