

| INDEX OF SHEETS |  |
|-----------------|--|
| No.             | DESCRIPTION                                    |
| <b>A Sheets</b> | <b>Title Sheets</b>                            |
| A.1             | Title Sheet                                    |
| A.2             | Location Map Sheet                             |
| <b>C Sheets</b> | <b>Quantities and General Information</b>      |
| C.1 - 5         | Estimated Project Quantities & Reference Notes |
| <b>P Sheets</b> | <b>Lighting Layout Sheets</b>                  |
| P.1 - 2         | Lighting Removal Sheets                        |
| P.3 - 5         | Lighting Layout Sheets                         |



PLANS OF PROPOSED IMPROVEMENT ON THE  
PRIMARY ROAD SYSTEM  
MONONA COUNTY  
LIGHTING  
I-29/IA 175 Interchange Near Onawa

SCALES: As Noted

Refer to the Proposal Form for list of applicable specifications.

Value Engineering Saves. Refer to Article 1105.14 of the Specifications.

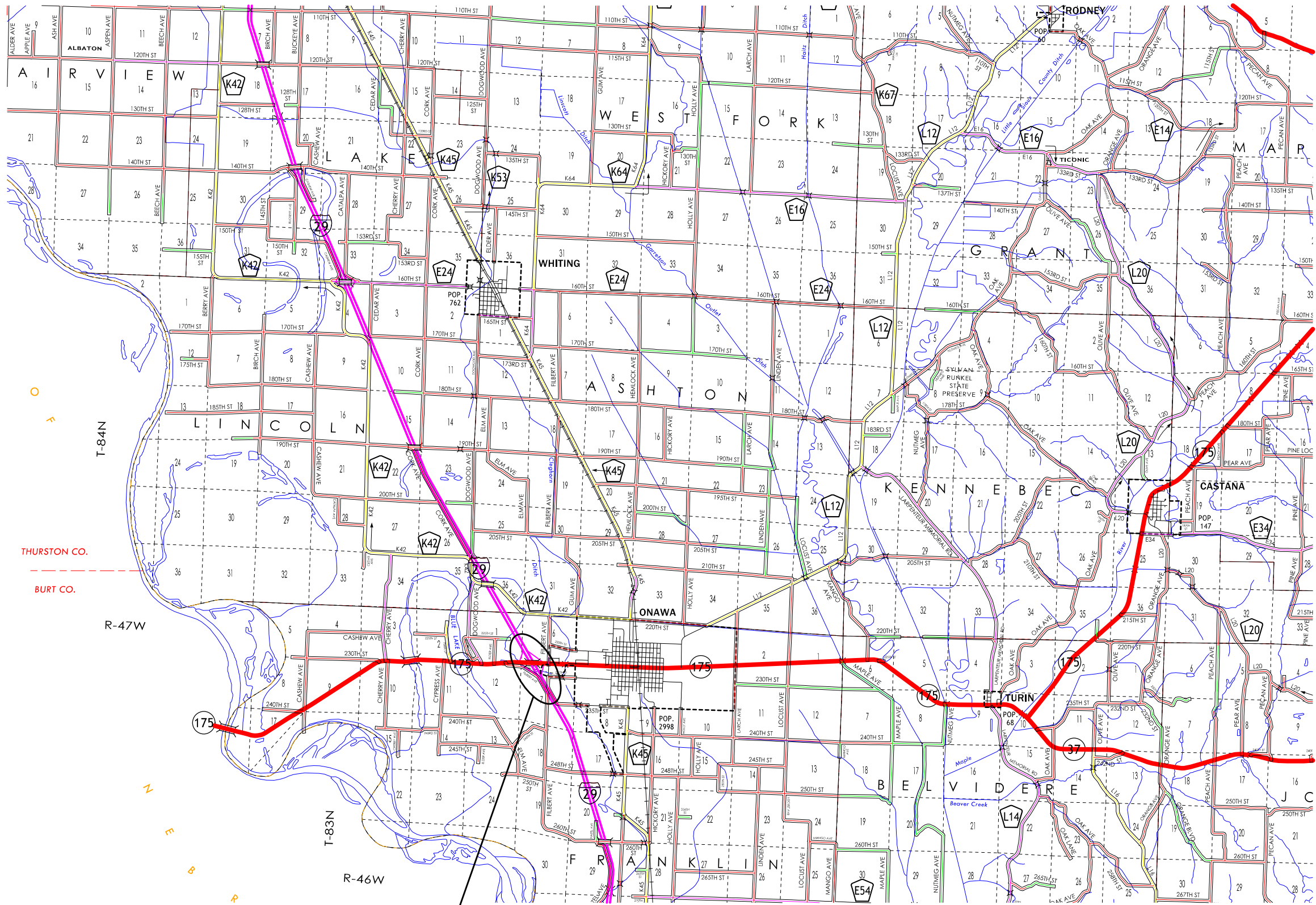


I hereby certify that this engineering document was prepared by me or under my direct personal supervision and that I am a duly licensed Professional Engineer under the laws of the State of Iowa.

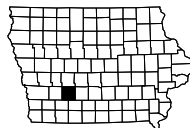
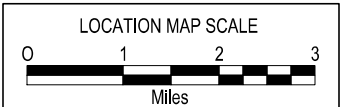
*Yaad Kaizer Rahman* 10-7-2025  
YAAD KAIZER RAHMAN, P.E. DATE  
License Number: P29250  
My license renewal date is December 31, 2025.  
Pages or sheets covered by this seal:  
A.1,A.2, C.1-5, P.1-5

REVISIONS

| TOTAL                         |  |
|-------------------------------|--|
| 12                            |  |
| PROJECT IDENTIFICATION NUMBER |  |
| 21-67-175-020                 |  |
| PROJECT NUMBER                |  |
| STP-175-1(98)--2C-67          |  |
| R.O.W. PROJECT NUMBER         |  |
| STPN-175-1-(100)--2j-67)      |  |
|                               |  |
|                               |  |



PROJECT LOCATION



ESTIMATED PROJECT QUANTITIES AND REFERENCE NOTES

Lighting Items : Roadway Lighting plan items  
DELIVER AND STOCKPILE  
SALVAGED MATERIALS :  
ITS Items : ITS Work

| Item no. | Item Code    | Item  | Unit | Quantities     |  |           |       | Estimate Reference Notes  |
|----------|--------------|---|------|----------------|--|-----------|-------|---|
|          |              |   |      | Estimated      |  |           |       |   |
|          |              |   |      | Lighting Items | DELIVER AND STOCKPILE SALVAGED MATERIALS | ITS Items | Total |   |
| 1        | 2401-6745356 | REMOVAL OF CONCRETE FOOTINGS OF LIGHT POLES         | EACH | 8              |  |           | 8     | A. Refer to P Sheets for locations and details.<br>B. This item includes the demolition and disposal of each light pole concrete footing per the plans.<br>C. Method of Measurement: By count of each light pole concrete footing removed.<br>D. Basis of Payment: The contractor will be paid the contract unit price for each light pole concrete footing removed. Payment is full compensation for furnishing all materials, equipment, and labor required to remove each light pole footing and any associated access handhole including waste disposal, backfill of the void, compaction to finished grade, and surface restoration. Protection, splicing, decommissioning, and removal of electric conductors and portions of conduit associated with the footing shall be incidental to the cost of the footing removal. |
| 2        | 2401-6745765 | REMOVAL OF LIGHT POLES                              | EACH | 7              |  |           | 7     | A. Refer to the P Sheets for locations and details.<br>B. This item includes the protection and removal of the roadway light pole assembly for salvage to the owner.<br>C. Method of Measurement: By count of each light pole structure removed.<br>D. Basis of Payment: The contractor will be paid the contract unit price for each light pole structure removed. Payment is full compensation for furnishing all materials, equipment, and labor required to protect and remove each light pole assembly for salvage to the owner.   |
| 3        | 2518-0000015 | ITS POWER INSTALLED FOUNDATION, FURNISH AND INSTALL | EACH |                |  | 1         | 1     | A. Refer to the P Sheets for location and details.<br>B. Refer to Developmental Specification: Developmental specifications for intelligent transportation systems.<br>C. Method of Measurement and Basis of Payment per Standard Specifications.   |
| 4        | 2518-0000025 | ITS STEEL POLE, FURNISH AND INSTALL                 | EACH |                |  | 1         | 1     |   |
| 5        | 2518-0000040 | ITS STEEL POLE, REMOVE                              | EACH |                |  | 1         | 1     |   |
| 6        | 2518-0000055 | ITS DEVICE CABINET, INSTALL ONLY                    | EACH |                |  | 1         | 1     |   |
| 7        | 2518-0000150 | ITS GROUND ROD                                      | EACH |                |  | 1         | 1     |   |
| 8        | 2523-0000100 | LIGHTING POLES                                      | EACH | 20             |  |           | 20    | A. Refer to the P Sheets for locations and details.<br>B. Refer to Tab. 108-1 and Tab. 108-11A in the C Sheets.<br>C. Provide and install each light pole assembly per Iowa DOT Standard Specifications and Standard Road Plans LI-101 and LI-201.<br>D. Method of Measurement: By count of each light pole assembly installed.<br>E. Basis of Payment: The contractor will be paid the contract unit price for each light pole assembly installed. Payment is full compensation for furnishing all materials, equipment, and labor required to install each light pole assembly including luminaire, pole, footing, grounding, and associated riser conductors in pole.  |

| Item no. | Item Code    | Item  | Unit | Quantities     |  |           |       | Estimate Reference Notes  |
|----------|--------------|---|------|----------------|--|-----------|-------|---|
|          |              |   |      | Estimated      |  |           |       |   |
|          |              |   |      | Lighting Items | DELIVER AND STOCKPILE SALVAGED MATERIALS | ITS Items | Total |   |
| 9        | 2523-0000200 | ELECTRICAL CIRCUITS   | LF   | 9,225          |  |           | 9,225 | A. Refer to the P Sheets for locations and details.<br>B. Refer to Tab. 108-2 and Tab. 108-12 in the C Sheets.<br>C. Provide and install Electrical Circuits per Iowa DOT Standard Specifications and Standard Road Plan LI-141.<br>D. Method of Measurement: By count of each lineal foot of electrical circuit installed.<br>E. Basis of Payment: The contractor will be paid the contract unit price for each lineal foot of electrical circuit installed. Payment is full compensation for furnishing all materials, equipment, and labor required to install conduit, fittings, conductors, and splice connectors/terminations including excavation, backfill, and compaction. |
| 10       | 2523-0000310 | HANDHOLES AND JUNCTION BOXES                                | EACH | 14             |  |           | 14    | A. Refer to the P Sheets for locations and details.<br>B. Provide and install Handholes/Junction Boxes per Iowa DOT Standard Specifications and Standard Road Plan LI-103.<br>C. Handholes shall be Type I per Standard Road Plan LI-103 unless noted otherwise.<br>D. Basis of Payment: The contractor will be paid the contract unit price for each handhole installed. Payment is full compensation for furnishing all materials, equipment, and labor required to install each handhole including excavation, backfill, compaction, ground rod, and bonding conductors.   |
| 11       | 2523-0000400 | CONTROL CABINET   | EACH | 1              |  |           | 1     | A. Refer to the P Sheets for location and details.<br>B. Provide and install Pad-Mounted Control Cabinet per Iowa DOT Standard Specifications and Standard Road Plan LI-152.<br>C. Refer to Standard Road Plan LI-151 and Standard Specifications.<br>D. Method of Measurement and Basis of Payment per Standard Specifications.  |
| 12       | 2526-9000000 | GEOSPATIAL MAPPING OF SUB-SURFACE AND UNDERGROUND UTILITIES | LF   | 1              |  |           | 1     | Refer to DS Geospatial Mapping of Sub-Surface and Underground Utilities.  |
| 13       | 2528-8445110 | TRAFFIC CONTROL   | LS   | 1              |  |           | 1     | A. Includes all traffic control devices and equipment necessary to maintain traffic in accordance with the current Standard Specifications. Refer to Tab 108-23A for additional information.  |
| 14       | 2528-8445113 | FLAGGERS  | EACH | 0              |  |           | 0     | (Designer should enter a quantity of 0).<br><br>See Proposal.   |
| 15       | 2533-4980005 | MOBILIZATION  | LS   | 1              |  |           | 1     | --  |
| 16       | 2555-0000010 | DELIVER AND STOCKPILE SALVAGED MATERIALS                    | LS   |                | 1  |           | 1     | A. Refer to Tab. 110-13 in C Sheets.<br>B. Method of Measurement: By lump sum.<br>C. Basis of Payment: The contractor will be paid the contract lump sum price for transport and delivery of the identified materials/equipment to the designated stockpile location. This shall be considered full compensation for furnishing all labor, equipment, and materials required to coordinate delivery with contact person, load a materials/equipment at the project site, transport, and unload identified materials/equipment at the delivery site.   |



| Item no. | Item Code    | Item  | Unit | Quantities     |  |           |       | Estimate Reference Notes   |
|----------|--------------|---|------|----------------|--|-----------|-------|--|
|          |              |   |      | Estimated      |  |           |       |  |
|          |              |   |      | Lighting Items | DELIVER AND STOCKPILE SALVAGED MATERIALS | ITS Items | Total |  |
| 17       | 2599-9999005 | ('EACH' ITEM) REMOVAL OF LIGHTING CONTROL CABINET | EACH | 1              |  |           | 1     | A. Refer to the P Sheets for locations and details.<br>B. This item includes complete removal of pole mounted lighting control cabinets and poles. Salvage is to contractor for recycle/disposal.<br>C. Method of Measurement: By count each of each pole mounted lighting control cabinet removed.<br>D. Basis of Payment: The contractor will be paid the contract unit price for each pole mounted lighting control cabinet removed. Payment includes furnishing all materials, equipment, and labor to remove the existing cabinet, wood pole, and concrete apron around the pole. Incidental to and included with the removal of the lighting control cabinet is waste disposal, backfill of the void, compaction to finished grade, surface restoration, and coordination with the utility to disconnect/remove the overhead service drop. |
| 18       | 2599-9999010 | ('LUMP SUM' ITEM) DEMOLITION OF ELECTRIC CIRCUITS | LS   | 1              |  |           | 1     | A. Refer to the P Sheets for locations and details.<br>B. This item includes the removal of unused existing handholes, cutting back of unused existing conduits/conductors, and removal of conductors from conduits as called out on P Sheets. Salvage of removed materials is to the contractor for recycle/disposal.<br>C. Method of Measurement: By lump sum.<br>D. Basis of Payment: The contractor will be paid the contract lump sum price for the removal of unused existing electrical circuits. Payment includes furnishing all materials, equipment, and labor to remove the electrical circuits. Incidental to and included with the removal of the electrical circuits is waste disposal, backfill of voids, compaction to finished grade, and surface restoration.  |
|          |              |   |      |                |  |           |       |  |
|          |              |   |      |                |  |           |       |  |

## HIGHWAY LIGHTING DATA

The Iowa DOT is revising the geometrics at the IA-175/I-19 Onawa interchange located in Monona County. The project generally consists of the following new work:

- (20) New IADOT conventional lighting poles.
- (7) Existing IADOT poles, arms and luminaires to be removed, stored and transported to the IADOT Onawa IA Maintenance Garage. As well as all associated circuitry, (1) pad mounted lighting control cabinets, associated conduit, and wire.

The lighting and ITS portion of this project will have as a deliverable the following of Developmental Specification: DEVELOPMENTAL SPECIFICATIONS FOR GEOSPATIAL MAPPING OF SUB-SURFACE AND UNDERGROUND UTILITIES' as well as all other referenced or associated specifications.

## ITS CONTRACTOR RESPONSIBILITIES

Coordinate with IADOT Maintenance contractor to remove existing electronics/camera/sensors (Call Jason Dale). See P.1  
Remove: ITS camera pole/power installed foundation.  
Provide/install: One powered foundation and ITS pole.

The ITS Equipment for this project shall be provided and installed per IADOT Developmental Specifications for Intelligent Transportation Systems and per standard ITS plans.

The IIS portion of this project will have as a deliverable the following of Developmental Specification: DEVELOPMENTAL SPECIFICATIONS FOR INTELLIGENT TRANSPORTATION SYSTEMS' as well as all other referenced or associated specifications.

Electrical Service: Western Iowa Power Corporation is the electric utility serving power to the IA-175/I-19 Onawa interchange lighting. The secondary electrical service is 240/120 volts, single-phase. The contractor will be responsible for coordination of utility service connections coordination of utility service connections (1), connection to the Pad-mounted Utility Service Meters, and energization of the new conventional lighting system (LC-A).

Refer to the P-Sheets for additional information.  
(712) 433-1622  
418 E Iowa Avenue  
Onawa, Iowa 51040

Obtain One-Call services and verify the location of existing underground utilities and lighting circuits prior to proceeding with lighting/electrical installations.

Light Poles: All Light Poles shall be Transformer Base type, per Standard Road Plan LI-210, Standard Specifications, and sized/dimensioned per the Layout Plans.

Roadway Luminaires: Contractor shall be responsible for supplying and installing solid state light emitting diode (LED) cobrahead style luminaires as described for the new luminaire locations. All Luminaires to have NEMA Label. LED luminaires shall be:

Cooper Lighting - Archeon Model:  
ARCH-M-PA2-110-740-U-T2R-AP-10K-PR7-PSC for Type II distribution.  
ARCH-M-PA2-110-740-U-T3-AP-10K-PR7-PSC for Type III distribution.

or  
American Electric Lighting - Autobahn Model:  
ATB0-P304-MVOLT-R2-P7-SH for Type II distribution.  
ATB0-P304-MVOLT-R3-P7-SH for Type III distribution.

or  
Signify Lumec - RoadFocus Model:  
RFM-135W40LED-4K-G2-R2M-UNV-DMG-PH9-RCD7-GY3 for Type II distribution.  
RFM-135W40LED-4K-G2-R3-UNV-DMG-PH9-RCD7-GY3 for Type III distribution.

No substitutes will be allowed. All luminaires shall be rated for and connected for operation at 240 Volts.

## ELECTRICAL DUCTS

[illegible]

## LIGHTING INSTALLATIONS

| Location |              | LI-101 |   |         | LI-201 | Remarks |
|----------|--------------|--------|---|---------|--------|---------|
|          |              | Type   | A | E<br>FT | Type   |         |
| No.      | Station      |        |   |         |        |         |
| A101     | STA. 732+48  | 1      | 6 | 6.0     | A      |         |
| A102     | STA. 729+77  | 1      | 6 | 6.0     | A      |         |
| A103     | STA. 726+99  | 1      | 6 | 6.0     | A      |         |
| A104     | STA. 724+19  | 1      | 6 | 6.0     | A      |         |
| A105     | STA. 721+39  | 1      | 6 | 6.0     | A      |         |
| A106     | STA. 718+59  | 1      | 6 | 6.0     | A      |         |
| A107     | STA. 715+79  | 1      | 6 | 6.0     | A      |         |
|          |              |        |   |         |        |         |
| A201     | STA. 1752+33 | 1      | 6 | 6.0     | A      |         |
| A202     | STA. 1749+83 | 1      | 6 | 6.0     | A      |         |
| A203     | STA. 1738+62 | 1      | 6 | 6.0     | A      |         |
|          |              |        |   |         |        |         |
| A301     | STA. 1741+23 | 1      | 6 | 6.0     | A      |         |
| A302     | STA. 3549+71 | 1      | 6 | 6.0     | A      |         |
| A303     | STA. 4544+85 | 1      | 6 | 6.0     | A      |         |
|          |              |        |   |         |        |         |
| A401     | STA. 762+27  | 1      | 6 | 6.0     | A      |         |
| A402     | STA. 764+98  | 1      | 6 | 6.0     | A      |         |
| A403     | STA. 767+77  | 1      | 6 | 6.0     | A      |         |
| A404     | STA. 770+57  | 1      | 6 | 6.0     | A      |         |
| A405     | STA. 773+37  | 1      | 6 | 6.0     | A      |         |
| A406     | STA. 776+17  | 1      | 6 | 6.0     | A      |         |
| A407     | STA. 778+96  | 1      | 6 | 6.0     | A      |         |
|          |              |        |   |         |        |         |
|          |              |        |   |         |        |         |

## STANDARD ROAD PLANS

The following Standard Road Plans apply to construction work on this project.

| Number | Date     | Title   |
|--------|----------|---|
| LI-101 | 10-21-14 | Light Pole Location                                 |
| LI-103 | 04-19-22 | Conduit and Precast Handholes                       |
| LI-141 | 10-21-14 | Electrical Installation (Roadway Ducts)             |
| LI-142 | 04-21-15 | Electrical Installation (Bases)                     |
| LI-152 | 10-21-14 | Control Cabinet (Pad-Mounted)                       |
| LI-201 | 04-18-17 | Light Pole Foundation                               |
| LI-210 | 10-21-14 | Transformer Base (Cast Aluminum)                    |
| TC-1   | 10-15-19 | Work Not Affecting Traffic (Two-Lane or Multi-Lane) |
| TC-202 | 04-18-23 | Work Within 15 ft of Traveled Way                   |
| TC-213 | 04-18-23 | Lane Closure with Flaggers                          |
| TC-402 | 04-18-23 | Work Within 15 ft of Traveled Way                   |
| TC-418 | 04-18-23 | Lane Closure on Divided Highway                     |

108-12  
10-21-14

UTILITY  
Modified

UTILITY NOTES

Lighting Contractor shall check for locations of utilities, drainage structures or other facilities in the construction area. Any damage to such facilities due to the contractor's carelessness shall be corrected at the contractor's expense.  
  
IADOT New Utility Service Agreement Contact  
Billing Counties: Linn  
5455 Kirkwood Blvd, SW, Cedar Rapids Iowa, 52404  
319-364-0235  
TIN: 42-6004226  
AP.D6office@iowadot.us

111-01  
04-17-12

WASTE  
Modified

WASTE

It shall be the contractor's responsibility to provide waste areas or disposal sites for excess materials (excavated material or broken concrete) which is not desirable to be incorporated into the work involved on this projects.  
  
It shall be the contractor's responsibility to ensure that areas (including haul roads) selected for waste or disposal not impact 1) culturally sensitive sites or graves or 2) wetlands or "Waters of the U.S.", including streams or stream banks below the "ordinary high water mark", without an approved U.S. Army Corps of Engineers Section 404 Permit.  
  
No payment for overhaul will be allowed for material hauled to these sites. No material shall be placed within the right-of-way, unless specifically stated in the plans.

110-13  
04-20-10

DELIVERY AND STOCKPILING

| Item Description                        | Quantity | Units | Delivery Location                                   | Contact Name & Number                               | Remarks |
|---|----------|-------|---|---|---------|
| Light Pole Structre (pole and mast arm) | 7        | EACH  | Onawa Garage<br>1800 Iowa 175 W.<br>Onawa, IA 51040 | Daniel Wickersham<br>Chris Collison<br>712.423.2040 |         |
| LED Luminaire                           | 7        | EACH  | Onawa Garage<br>1800 Iowa 175 W.<br>Onawa, IA 51040 | Daniel Wickersham<br>Chris Collison<br>712.423.2040 |         |
| Lighting Contral Cabinets               | 1        | EACH  | Onawa Garage<br>1800 Iowa 175 W.<br>Onawa, IA 51040 | Daniel Wickersham<br>Chris Collison<br>712.423.2040 |         |

108-23A  
08-01-08

TRAFFIC CONTROL PLAN

1. To the extent practicable, perform lighting installations in coordination with traffic control measures associated with Project Code: 21-67-175-020 / Phase Number : STP-175-1(95)--2C-67  
2. For lighting installations performed on roadways otherwise open to traffic, contractor shall maintain traffic on such roadways at all times.  
3. Traffic control on this project shall be in accordance with the TC series of Standard Road Plans listed on Tab. 105-4.  
All traffic control devices and equipment necessary to maintain traffic in accordance with the Manual of Uniform Traffic Control Devices (MUTCD) and the current Standard Specifications.

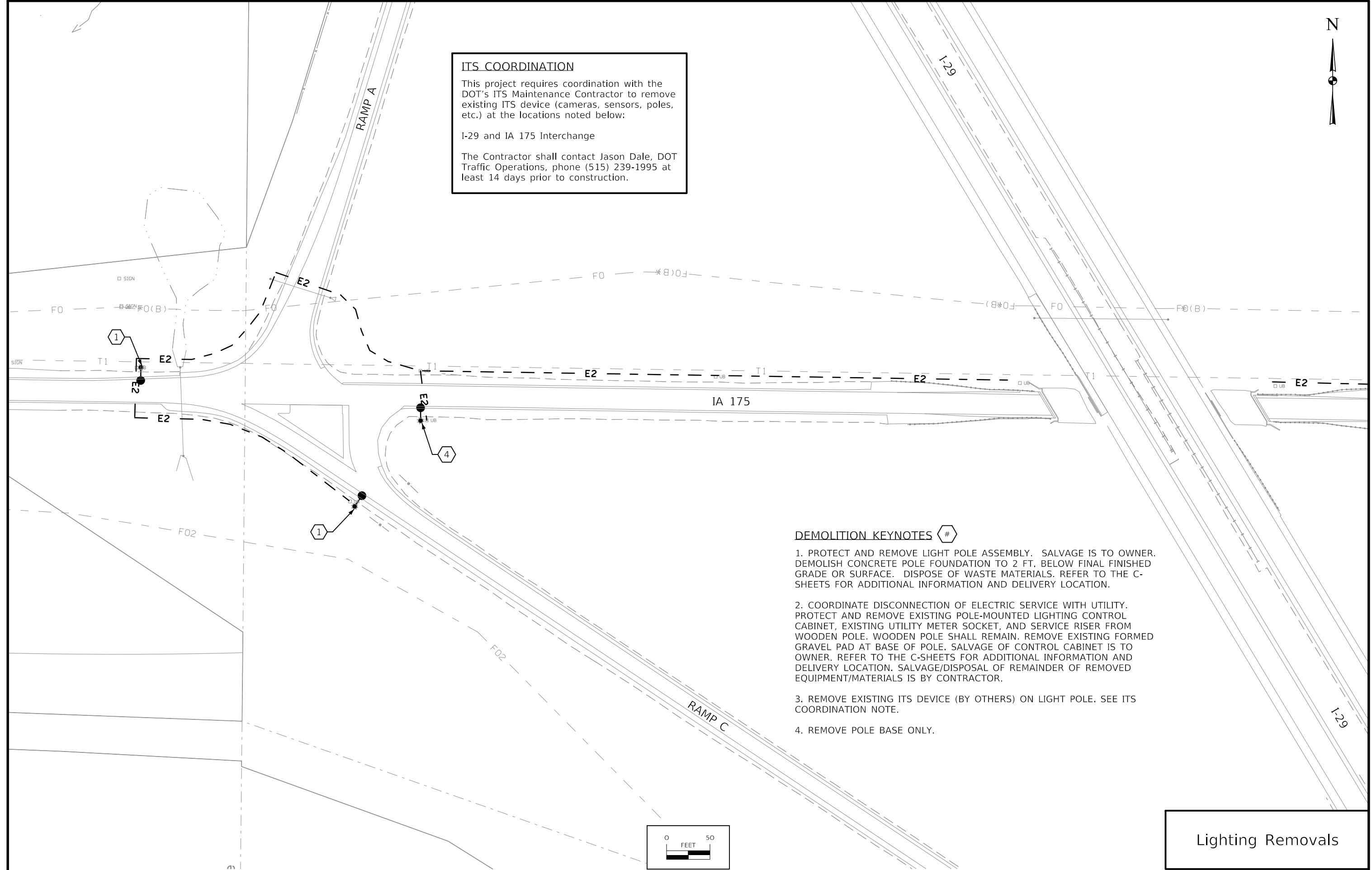
262-5  
10-18-05

UTILITIES  
(POINT 25 PROJECT)

This is a POINT 25 project and is subject to the provisions of IAC 761-115.25.

|          |         |             |                        |               |                |                      |              |     |
|----------|---------|-------------|------------------------|---------------|----------------|----------------------|--------------|-----|
| FILE NO. | ENGLISH | DESIGN TEAM | Jason Herman\ HR Green | MONONA COUNTY | PROJECT NUMBER | STP-175-1(98)--2C-67 | SHEET NUMBER | C.5 |
|----------|---------|-------------|------------------------|---------------|----------------|----------------------|--------------|-----|

3/21/2023 12:14:38 PM rtyrrel c:\pw\_work\pwwmain\ryan.tyrrell\d1565139\97029297LTG\_C01.xlsm



**ITS COORDINATION**

This project requires coordination with the DOT's ITS Maintenance Contractor to remove existing ITS device (cameras, sensors, poles, etc.) at the locations noted below:

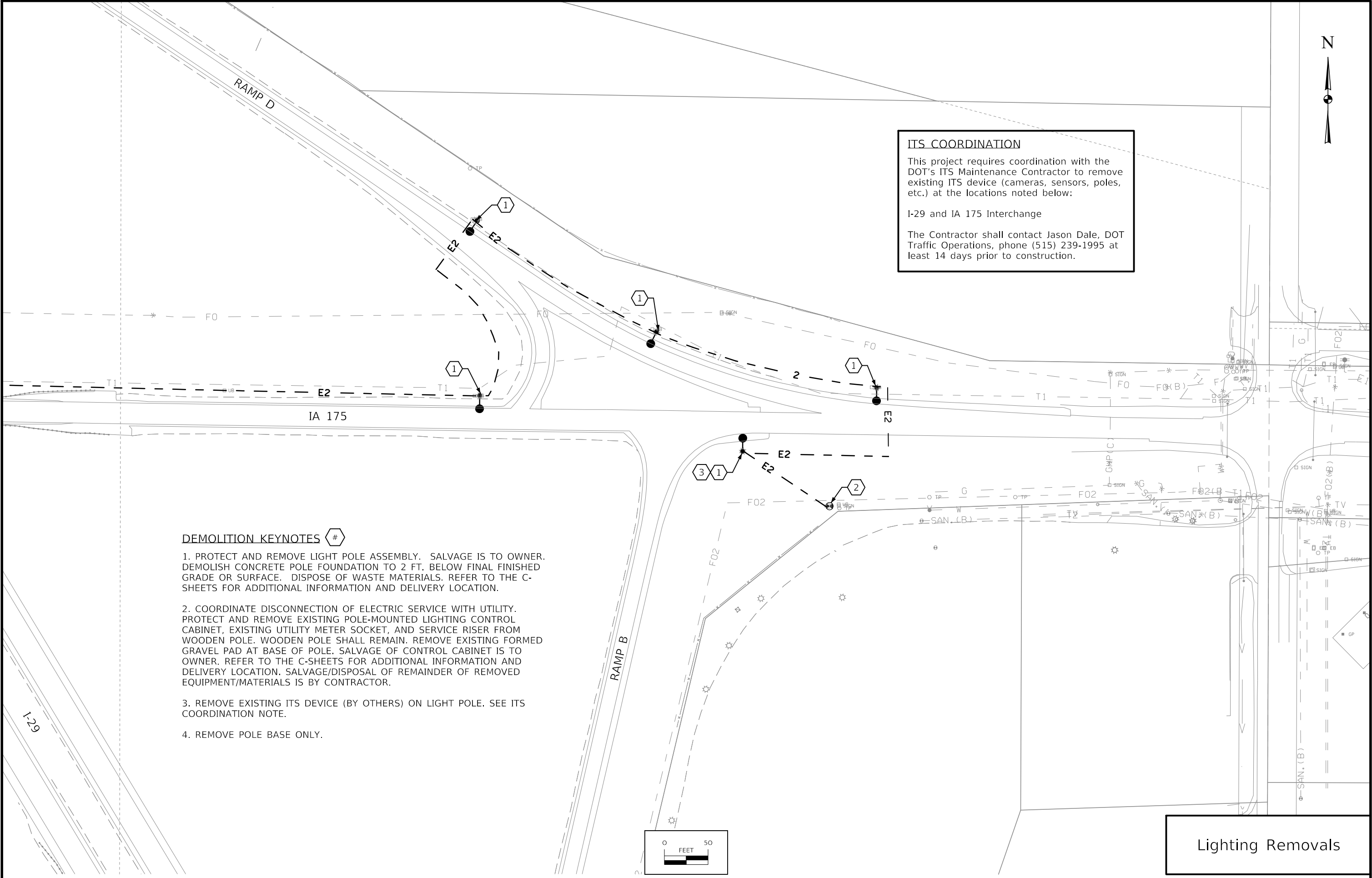
I-29 and IA 175 Interchange

The Contractor shall contact Jason Dale, DOT Traffic Operations, phone (515) 239-1995 at least 14 days prior to construction.

- DEMOLITION KEYNOTES** #
- 1. PROTECT AND REMOVE LIGHT POLE ASSEMBLY. SALVAGE IS TO OWNER. DEMOLISH CONCRETE POLE FOUNDATION TO 2 FT. BELOW FINAL FINISHED GRADE OR SURFACE. DISPOSE OF WASTE MATERIALS. REFER TO THE C-SHEETS FOR ADDITIONAL INFORMATION AND DELIVERY LOCATION.
  - 2. COORDINATE DISCONNECTION OF ELECTRIC SERVICE WITH UTILITY. PROTECT AND REMOVE EXISTING POLE-MOUNTED LIGHTING CONTROL CABINET, EXISTING UTILITY METER SOCKET, AND SERVICE RISER FROM WOODEN POLE. WOODEN POLE SHALL REMAIN. REMOVE EXISTING FORMED GRAVEL PAD AT BASE OF POLE. SALVAGE OF CONTROL CABINET IS TO OWNER. REFER TO THE C-SHEETS FOR ADDITIONAL INFORMATION AND DELIVERY LOCATION. SALVAGE/DISPOSAL OF REMAINDER OF REMOVED EQUIPMENT/MATERIALS IS BY CONTRACTOR.
  - 3. REMOVE EXISTING ITS DEVICE (BY OTHERS) ON LIGHT POLE. SEE ITS COORDINATION NOTE.
  - 4. REMOVE POLE BASE ONLY.

Lighting Removals





**ITS COORDINATION**

This project requires coordination with the DOT's ITS Maintenance Contractor to remove existing ITS device (cameras, sensors, poles, etc.) at the locations noted below:

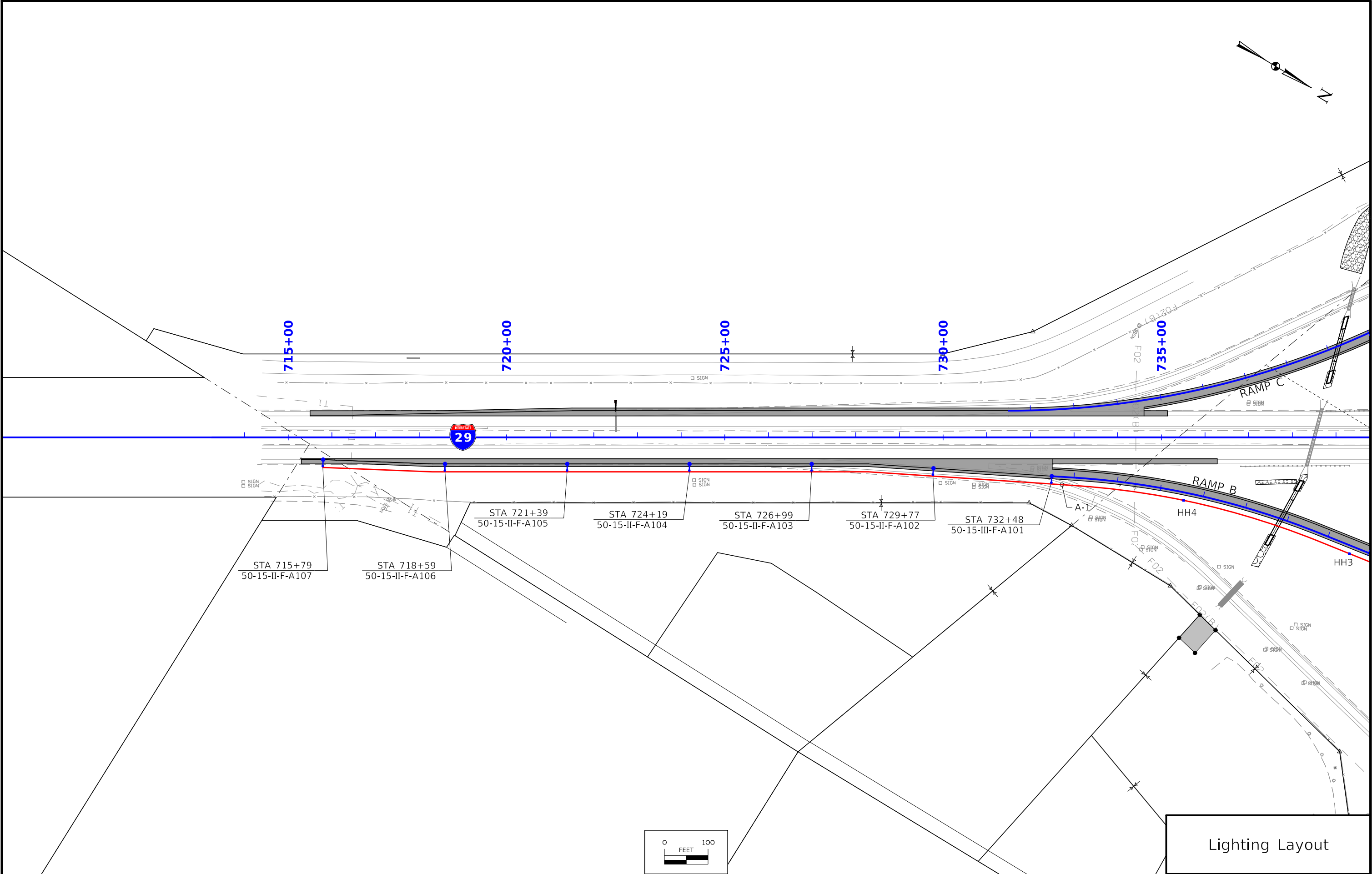
I-29 and IA 175 Interchange

The Contractor shall contact Jason Dale, DOT Traffic Operations, phone (515) 239-1995 at least 14 days prior to construction.

**DEMOLITION KEYNOTES** #

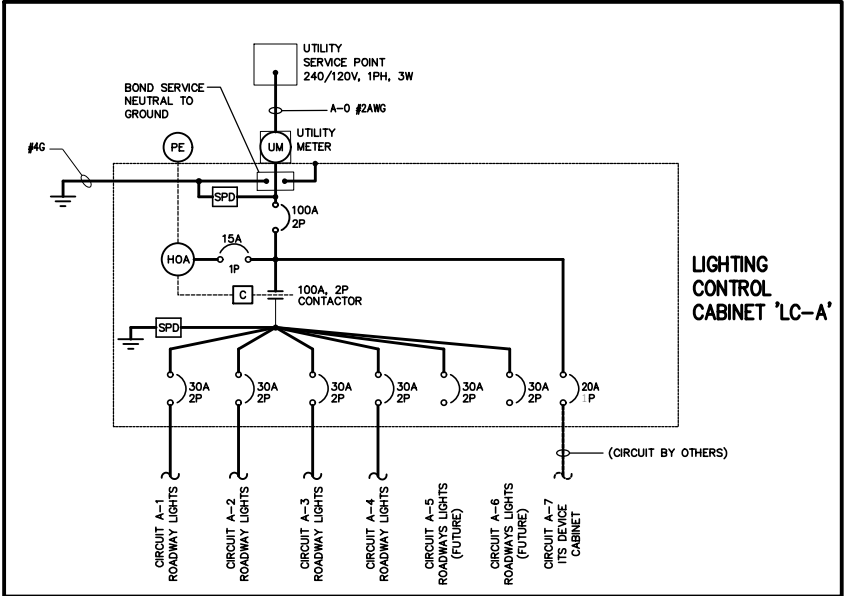
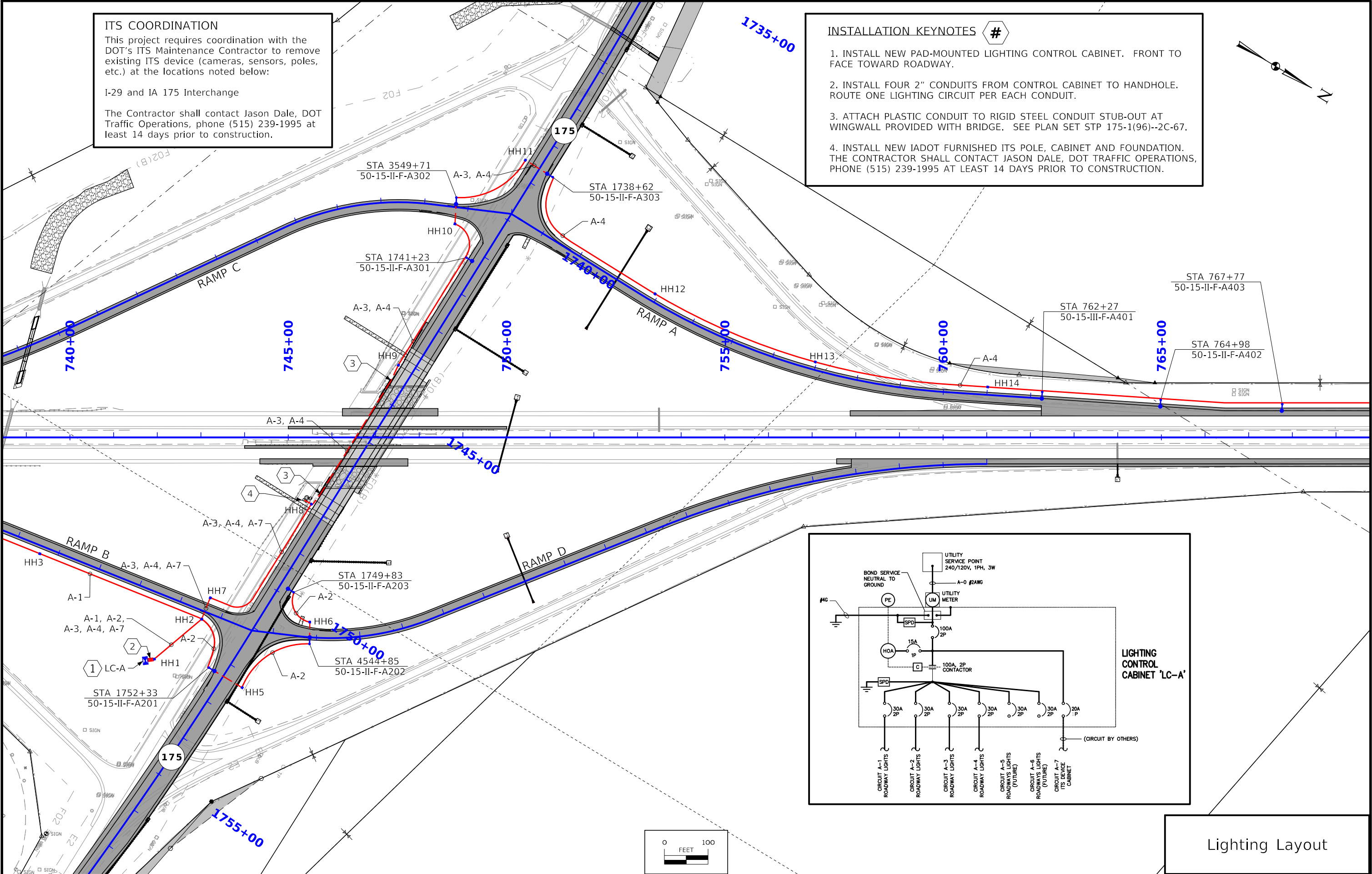
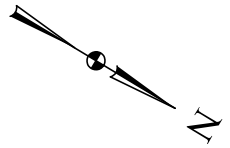
1. PROTECT AND REMOVE LIGHT POLE ASSEMBLY. SALVAGE IS TO OWNER. DEMOLISH CONCRETE POLE FOUNDATION TO 2 FT. BELOW FINAL FINISHED GRADE OR SURFACE. DISPOSE OF WASTE MATERIALS. REFER TO THE C-SHEETS FOR ADDITIONAL INFORMATION AND DELIVERY LOCATION.
2. COORDINATE DISCONNECTION OF ELECTRIC SERVICE WITH UTILITY. PROTECT AND REMOVE EXISTING POLE-MOUNTED LIGHTING CONTROL CABINET, EXISTING UTILITY METER SOCKET, AND SERVICE RISER FROM WOODEN POLE. WOODEN POLE SHALL REMAIN. REMOVE EXISTING FORMED GRAVEL PAD AT BASE OF POLE. SALVAGE OF CONTROL CABINET IS TO OWNER. REFER TO THE C-SHEETS FOR ADDITIONAL INFORMATION AND DELIVERY LOCATION. SALVAGE/DISPOSAL OF REMAINDER OF REMOVED EQUIPMENT/MATERIALS IS BY CONTRACTOR.
3. REMOVE EXISTING ITS DEVICE (BY OTHERS) ON LIGHT POLE. SEE ITS COORDINATION NOTE.
4. REMOVE POLE BASE ONLY.

Lighting Removals



**ITS COORDINATION**  
This project requires coordination with the DOT's ITS Maintenance Contractor to remove existing ITS device (cameras, sensors, poles, etc.) at the locations noted below:  
  
I-29 and IA 175 Interchange  
  
The Contractor shall contact Jason Dale, DOT Traffic Operations, phone (515) 239-1995 at least 14 days prior to construction.

- INSTALLATION KEYNOTES #**
1. INSTALL NEW PAD-MOUNTED LIGHTING CONTROL CABINET. FRONT TO FACE TOWARD ROADWAY.
  2. INSTALL FOUR 2" CONDUITS FROM CONTROL CABINET TO HANDHOLE. ROUTE ONE LIGHTING CIRCUIT PER EACH CONDUIT.
  3. ATTACH PLASTIC CONDUIT TO RIGID STEEL CONDUIT STUB-OUT AT WINGWALL PROVIDED WITH BRIDGE. SEE PLAN SET STP 175-1(96)--2C-67.
  4. INSTALL NEW IADOT FURNISHED ITS POLE, CABINET AND FOUNDATION. THE CONTRACTOR SHALL CONTACT JASON DALE, DOT TRAFFIC OPERATIONS, PHONE (515) 239-1995 AT LEAST 14 DAYS PRIOR TO CONSTRUCTION.



Lighting Layout

