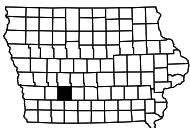


LIGHTING  
IM-035-4(308)97--13-77

LETTING DATE  
Jan 21, 2026

POLK COUNTY



INDEX OF SHEETS	
No.	DESCRIPTION
A Sheets	Title Sheets
A.1	Title Sheet
C Sheets	Quantities and General Information
C.1 - 4	Estimated Project Quantities and Reference Notes
P Sheets	Lighting Layout Sheets
P.1 - 4	Lighting Layout Sheets



PLANS OF PROPOSED IMPROVEMENT ON THE  
PRIMARY ROAD SYSTEM  
POLK COUNTY  
LIGHTING  
Co Rd F22 Interchange  
NB I-35 Rest Area

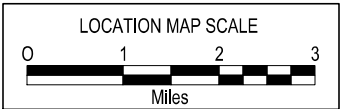
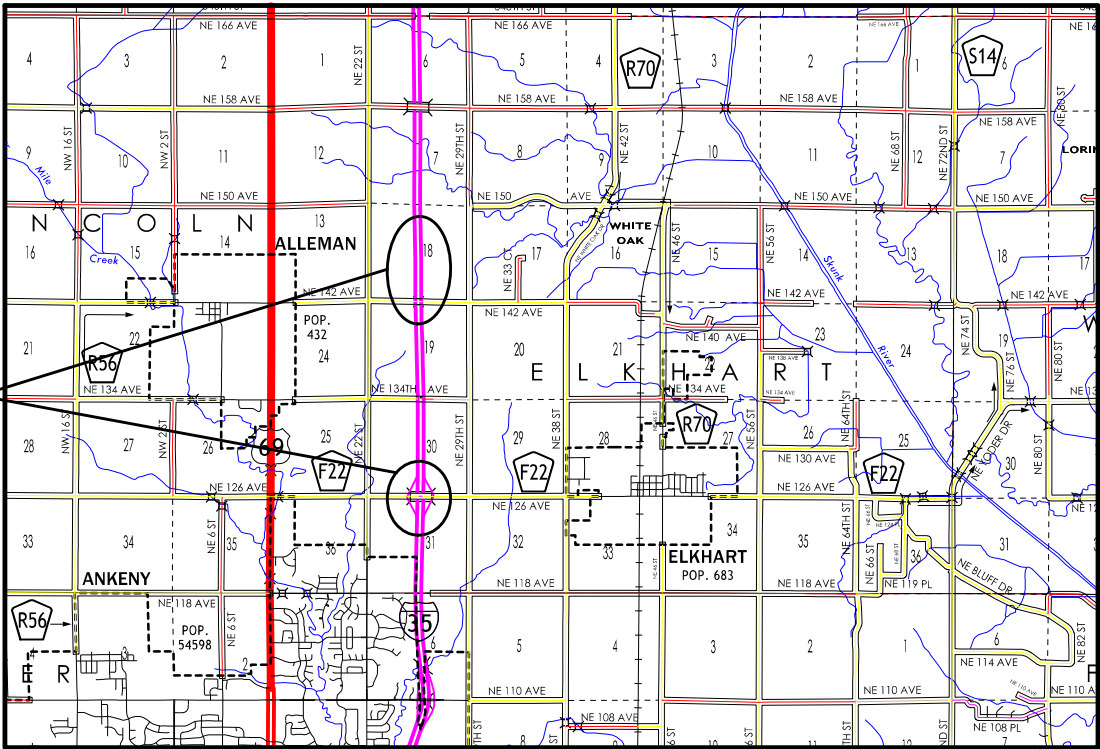
SCALES: As Noted

Refer to the Proposal Form for list of applicable specifications.

Value Engineering Saves. Refer to Article 1105.14 of the Specifications.



PROJECT LOCATIONS



I hereby certify that this engineering document was prepared by me or under my direct personal supervision and that I am a duly licensed Professional Engineer under the laws of the State of Iowa.

*Y. Rahman* 10-3-2025  
YAAD KAIZER RAHMAN, P.E. DATE  
License Number: P29250  
My license renewal date is December 31, 2025.  
Pages or sheets covered by this seal:  
A.1, C.1-4, P.1-4

REVISIONS

TOTAL
9
PROJECT IDENTIFICATION NUMBER
15-77-035-040-01
PROJECT NUMBER
IM-035-4(308)97--13-77
R.O.W. PROJECT NUMBER

ESTIMATED PROJECT QUANTITIES AND REFERENCE NOTES

Lighting Items : Lighting Items  
DELIVER AND STOCKPILE  
SALVAGED MATERIALS :

Item no.	Item Code	Item	Unit	Quantities			Estimate Reference Notes
				Estimated			
				Lighting Items	DELIVER AND STOCKPILE SALVAGED MATERIALS	Total	
1	2401-6745359	REMOVAL OF CONCRETE FOUNDATIONS OF LIGHT POLES	EACH	8		8	A. Refer to P Sheets for locations and details. B. This item includes the demolition and disposal of each light pole concrete footing per the plans. C. Method of Measurement: By count of each light pole concrete footing removed. D. Basis of Payment: The contractor will be paid the contract unit price for each light pole concrete footing removed. Payment is full compensation for furnishing all materials, equipment, and labor required to remove each light pole footing and any associated access handhole including waste disposal, backfill of the void, compaction to finished grade, and surface restoration. Protection, splicing, decommissioning, and removal of electric conductors and portions of conduit associated with the footing shall be incidental to the cost of the footing removal.
2	2401-6745765	REMOVAL OF LIGHT POLES	EACH	8		8	A. Refer to the P Sheets for locations and details. B. This item includes the protection and removal of the roadway light pole assembly for salvage to the owner. C. Method of Measurement: By count of each light pole structure removed. D. Basis of Payment: The contractor will be paid the contract unit price for each light pole structure removed. Payment is full compensation for furnishing all materials, equipment, and labor required to protect and remove each light pole assembly for salvage to the owner.
3	2523-0000100	LIGHTING POLES	EACH	20		20	A. Refer to the P Sheets for locations and details. B. Refer to Tab. 108-1 and Tab. 108-11A in the C Sheets. C. Provide and install each light pole assembly per Iowa DOT Standard Specifications and Standard Road Plans LI-101 and LI-201. D. Method of Measurement: By count of each light pole assembly installed. E. Basis of Payment: The contractor will be paid the contract unit price for each light pole assembly installed. Payment is full compensation for furnishing all materials, equipment, and labor required to install each light pole assembly including luminaire, pole, footing, grounding, and associated riser conductors in pole.
4	2523-0000200	ELECTRICAL CIRCUITS	LF	7,700		7,700	A. Refer to the P Sheets for locations and details. B. Refer to Tab. 108-2 and Tab. 108-12 in the C Sheets. C. Provide and install Electrical Circuits per Iowa DOT Standard Specifications and Standard Road Plan LI-141. D. Method of Measurement: By count of each lineal foot of electrical circuit installed. E. Basis of Payment: The contractor will be paid the contract unit price for each lineal foot of electrical circuit installed. Payment is full compensation for furnishing all materials, equipment, and labor required to install conduit, fittings, conductors, and splice connectors/terminations including excavation, backfill, and compaction.
5	2523-0000310	HANDHOLES AND JUNCTION BOXES	EACH	6		6	A. Refer to the P Sheets for locations and details. B. Provide and install Handholes/Junction Boxes per Iowa DOT Standard Specifications and Standard Road Plan LI-103.C. Handholes shall be Type I per Standard Road Plan LI-103 unless noted otherwise. D. Basis of Payment: The contractor will be paid the contract unit price for each handhole installed. Payment is full compensation for furnishing all materials, equipment, and labor required to install each handhole including excavation, backfill, compaction, ground rod, and bonding conductors.
6	2528-8445110	TRAFFIC CONTROL	LS	1		1	A. Includes all traffic control devices and equipment necessary to maintain traffic in accordance with the current Standard Specifications. Refer to Tab 108-23A for additional information.
7	2533-4980005	MOBILIZATION	LS	1		1	--

Item no.	Item Code	Item	Unit	Quantities			Estimate Reference Notes
				Estimated			
				Lighting Items	DELIVER AND STOCKPILE SALVAGED MATERIALS	Total	
8	2555-0000010	DELIVER AND STOCKPILE SALVAGED MATERIALS	LS		1	1	A. Refer to Tab. 110-13 in C Sheets. B. Method of Measurement: By lump sum. C. Basis of Payment: The contractor will be paid the contract lump sum price for transport and delivery of the identified materials/equipment to the designated stockpile location. This shall be considered full compensation for furnishing all labor, equipment, and materials required to coordinate delivery with contact person, load a materials/equipment at the project site, transport, and unload identified materials/equipment at the delivery site.
9	2599-9999010	('LUMP SUM' ITEM) DEMOLITION OF ELECTRIC CIRCUITS	LS	1		1	A. Refer to the P Sheets for locations and details. B. This item includes the removal of unused existing handholes, cutting back of unused existing conduits/conductors, and removal of conductors from conduits as called out on P Sheets. Salvage of removed materials is to the contractor for recycle/disposal. C. Method of Measurement: By lump sum. D. Basis of Payment: The contractor will be paid the contract lump sum price for the removal of unused existing electrical circuits. Payment includes furnishing all materials, equipment, and labor to remove the electrical circuits. Incidental to and included with the removal of the electrical circuits is waste disposal, backfill of voids, compaction to finished grade, and surface restoration.

108-11A  
08-01-08

Electrical Service: Consumers Energy is the electric utility serving power to the F22 interchange lighting. The secondary electrical service is 240/120 volts, single-phase, routed from a pad-mounted utility transformer. The contractor will be responsible for coordination of service disconnect/reconnect with the utility to fully remove the existing service drop and pole-mounted lighting controller, and re-energize the proposed lighting system. Refer to the P-Sheets for additional information.

Utility Contact: Kevin Peterson, Phone: (641) 754-1647,  
E-mail: [kpeterson@consumersenergy.net](mailto:kpeterson@consumersenergy.net) [onecall@consumersenergy.net](mailto:onecall@consumersenergy.net)

No substitutes will be allowed. All luminaires shall be rated for and connected for operation at 240 Volts.

105-4  
10-18-11

Number	Date	Title
LI-101	10-21-14	Light Pole Location
LI-103	04-19-22	Conduit and Precast Handholes
LI-141	10-21-14	Electrical Installation (Roadway Ducts)
LI-142	04-21-15	Electrical Installation (Bases)
LI-201	04-18-17	Light Pole Foundation
LI-210	10-21-14	Transformer Base (Cast Aluminum)
TC-1	10-15-19	Work Not Affecting Traffic (Two-Lane or Multi-Lane)
TC-202	04-18-23	Work Within 15 ft of Traveled Way
TC-402	04-18-23	Work Within 15 ft of Traveled Way

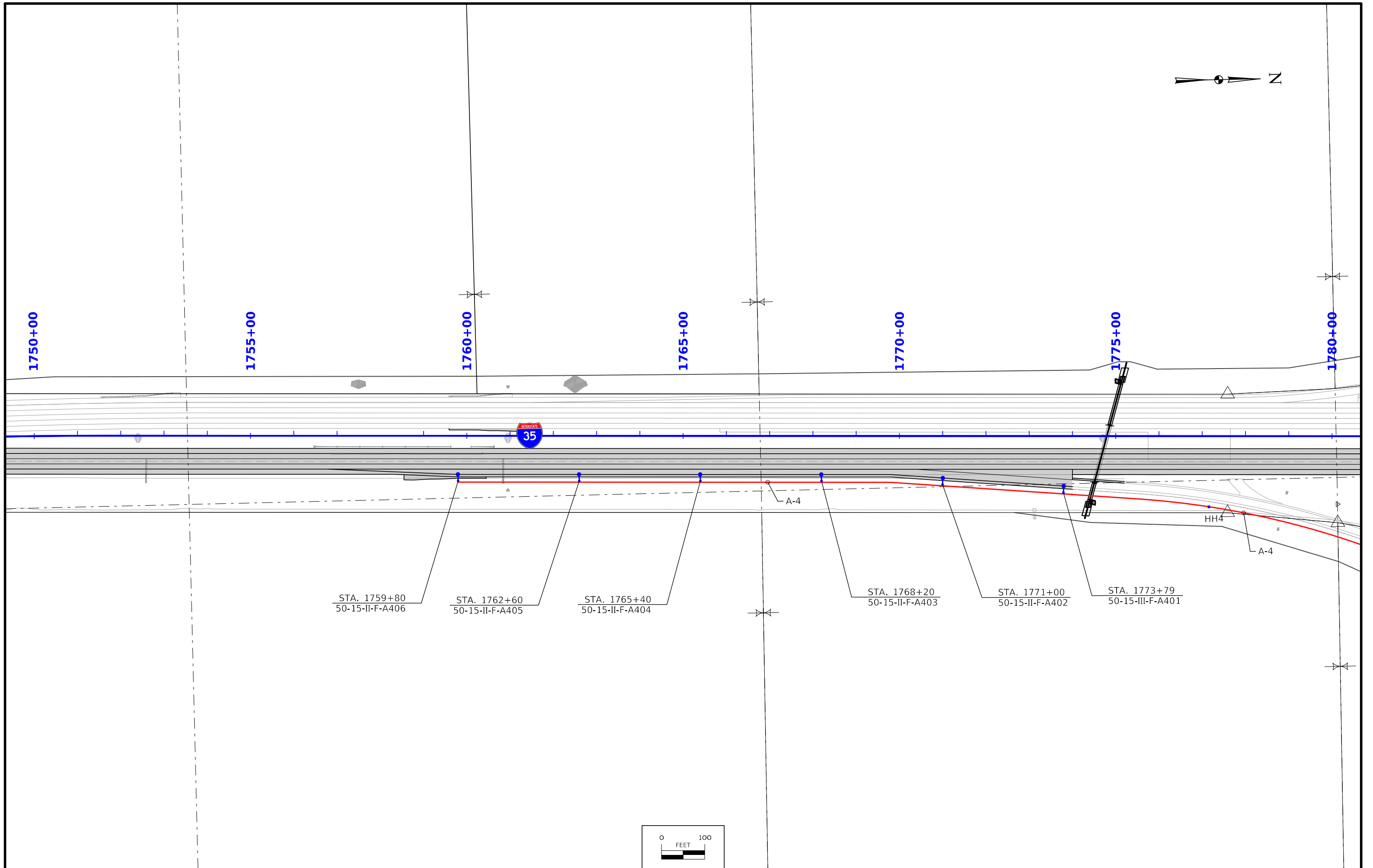
108-2  
08-01-08

[illegible]

108-1  
10-21-14

Location		LI-101			LI-201	Remarks
		Type	A	E FT	Type	
No.	Station					
A401	STA. 1773+79	1	6	6.0	A	
A402	STA. 1771+00	1	6	6.0	A	
A403	STA. 1768+20	1	6	6.0	A	
A404	STA. 1765+40	1	6	6.0	A	
A405	STA. 1762+60	1	6	6.0	A	
A406	STA. 1759+80	1	6	6.0	A	
N101	STA. 1512+23	1	6	6.0	A	
N102	STA. 1509+67	1	6	6.0	A	
N103	STA. 1506+97	1	6	6.0	A	
N104	STA. 1504+16	1	6	6.0	A	
N105	STA. 1501+36	1	6	6.0	A	
N106	STA. 1498+56	1	6	6.0	A	
N107	STA. 1495+76	1	6	6.0	A	
N201	STA. 3548+76	1	6	6.0	A	
N202	STA. 3551+56	1	6	6.0	A	
N203	STA. 3554+38	1	6	6.0	A	
N204	STA. 3557+20	1	6	6.0	A	
N205	STA. 3560+00	1	6	6.0	A	
N206	STA. 3562+80	1	6	6.0	A	
N207	STA. 3565+60	1	6	6.0	A	

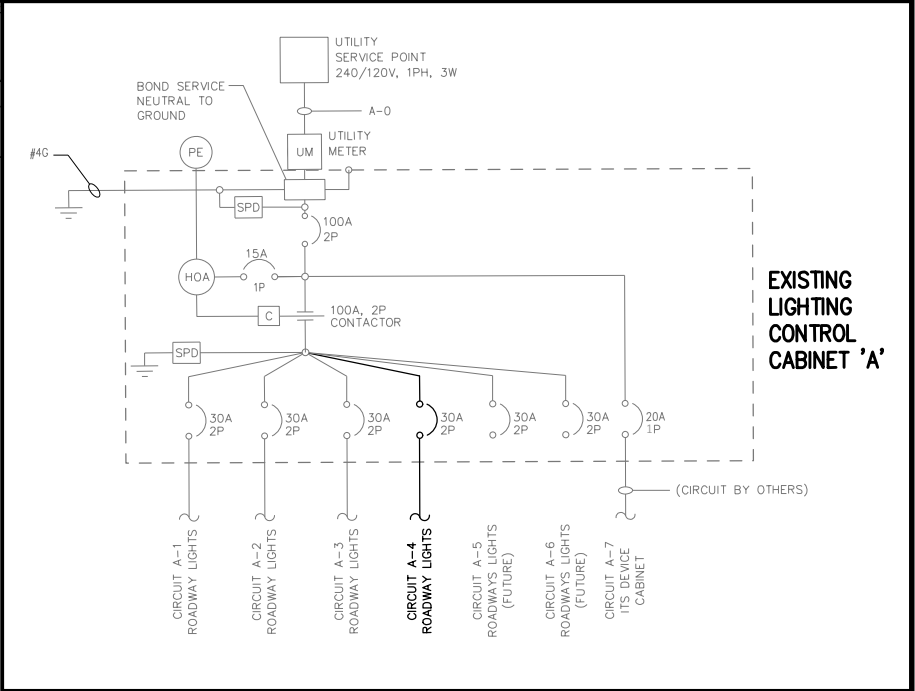
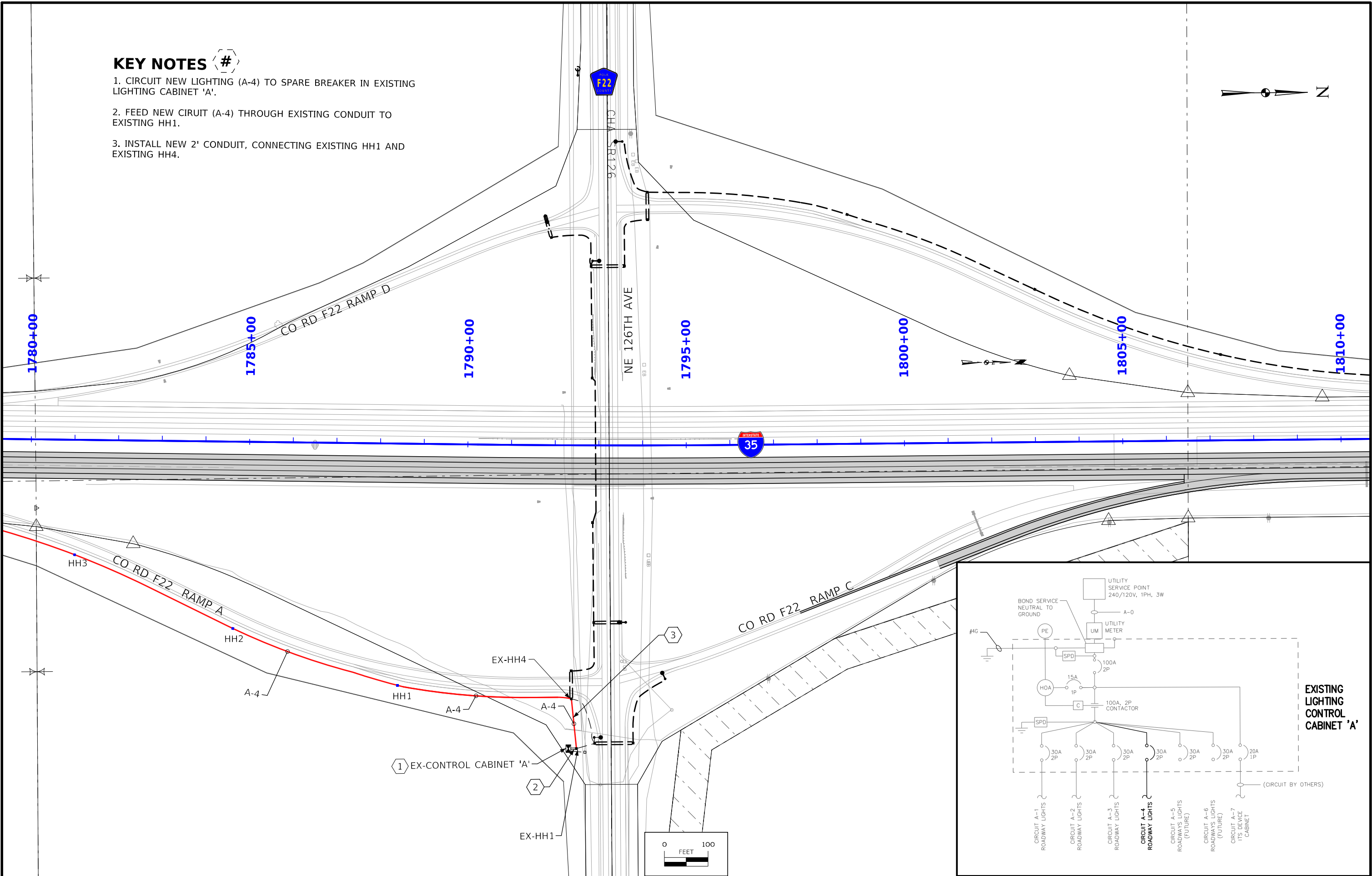




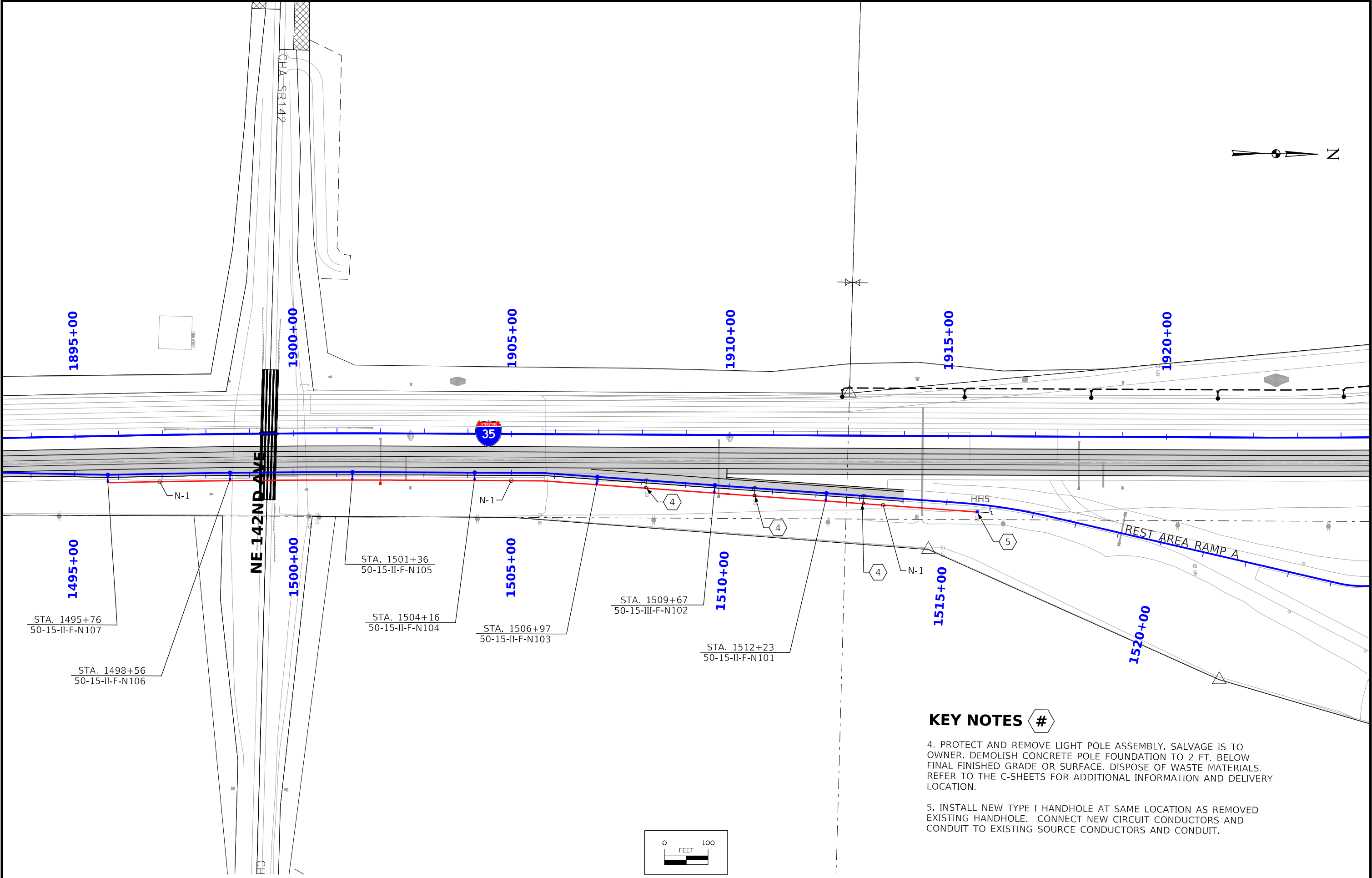
- KEY NOTES
- #
1. CIRCUIT NEW LIGHTING (A-4) TO SPARE BREAKER IN EXISTING LIGHTING CABINET 'A'.

2. FEED NEW CIRUIT (A-4) THROUGH EXISTING CONDUIT TO EXISTING HH1.

3. INSTALL NEW 2' CONDUIT, CONNECTING EXISTING HH1 AND EXISTING HH4.



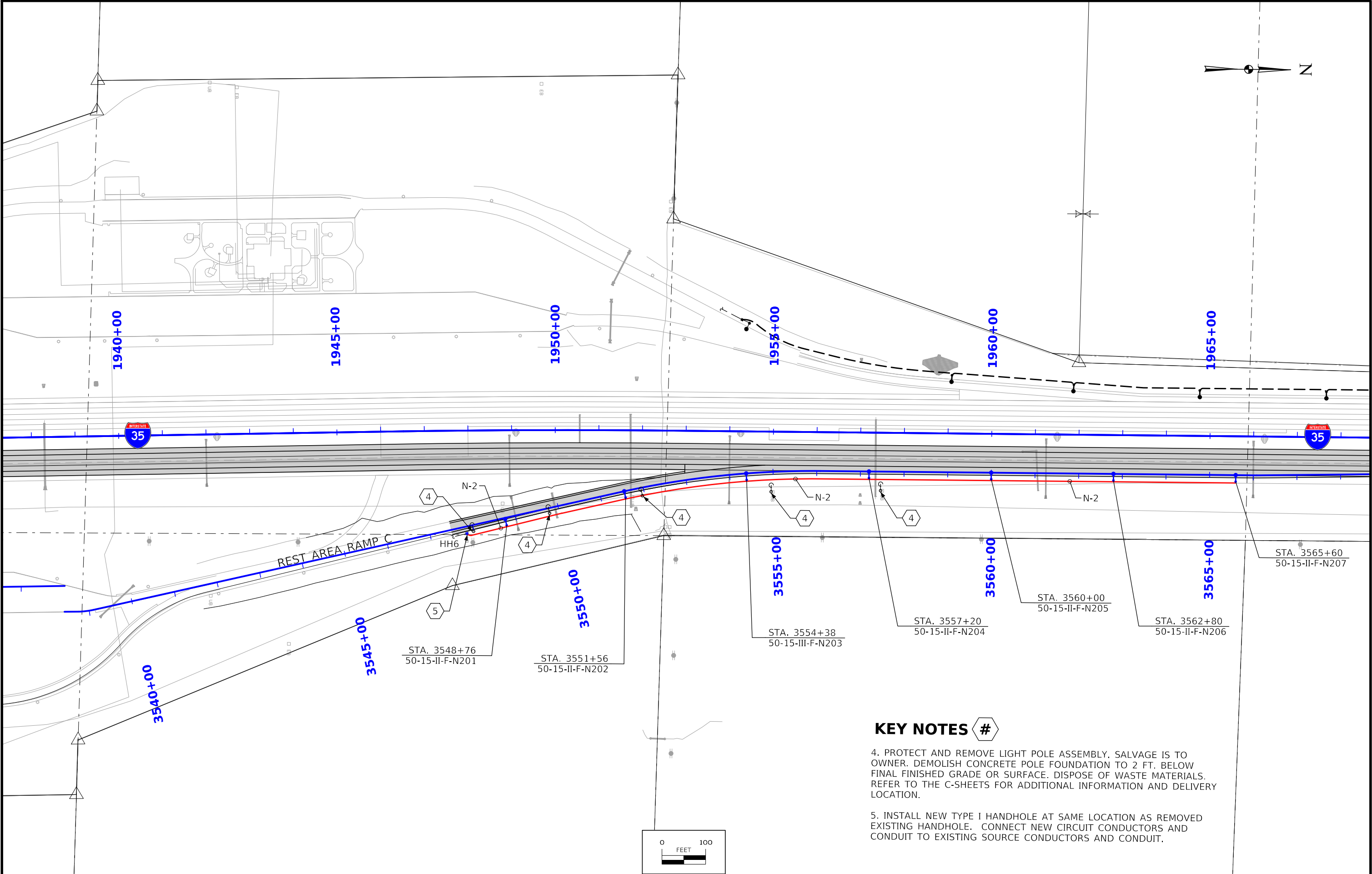




**KEY NOTES** #

- 4. PROTECT AND REMOVE LIGHT POLE ASSEMBLY. SALVAGE IS TO OWNER. DEMOLISH CONCRETE POLE FOUNDATION TO 2 FT. BELOW FINAL FINISHED GRADE OR SURFACE. DISPOSE OF WASTE MATERIALS. REFER TO THE C-SHEETS FOR ADDITIONAL INFORMATION AND DELIVERY LOCATION.
- 5. INSTALL NEW TYPE I HANDHOLE AT SAME LOCATION AS REMOVED EXISTING HANDHOLE. CONNECT NEW CIRCUIT CONDUCTORS AND CONDUIT TO EXISTING SOURCE CONDUCTORS AND CONDUIT.





**KEY NOTES** #

4. PROTECT AND REMOVE LIGHT POLE ASSEMBLY. SALVAGE IS TO OWNER. DEMOLISH CONCRETE POLE FOUNDATION TO 2 FT. BELOW FINAL FINISHED GRADE OR SURFACE. DISPOSE OF WASTE MATERIALS. REFER TO THE C-SHEETS FOR ADDITIONAL INFORMATION AND DELIVERY LOCATION.
5. INSTALL NEW TYPE I HANDHOLE AT SAME LOCATION AS REMOVED EXISTING HANDHOLE. CONNECT NEW CIRCUIT CONDUCTORS AND CONDUIT TO EXISTING SOURCE CONDUCTORS AND CONDUIT.