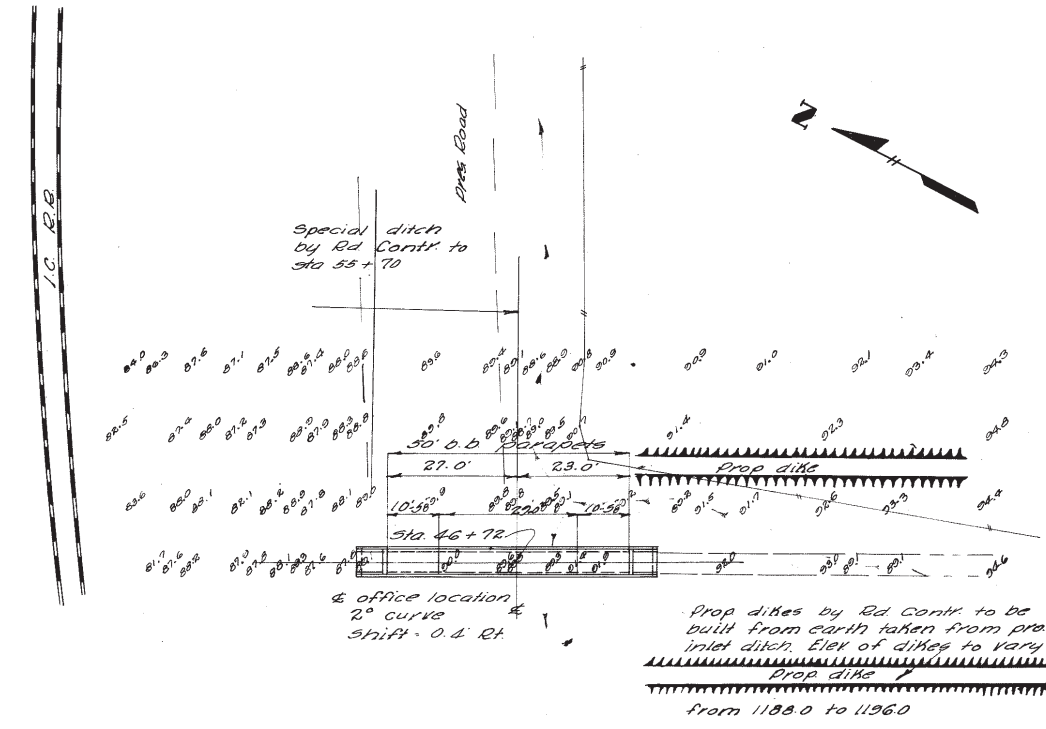
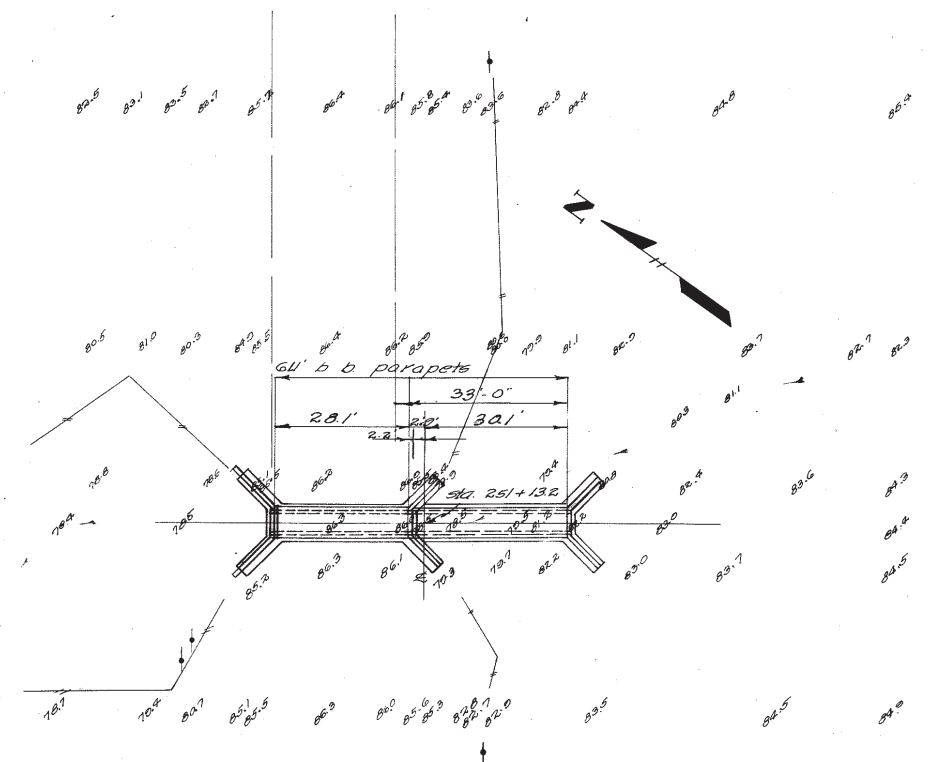
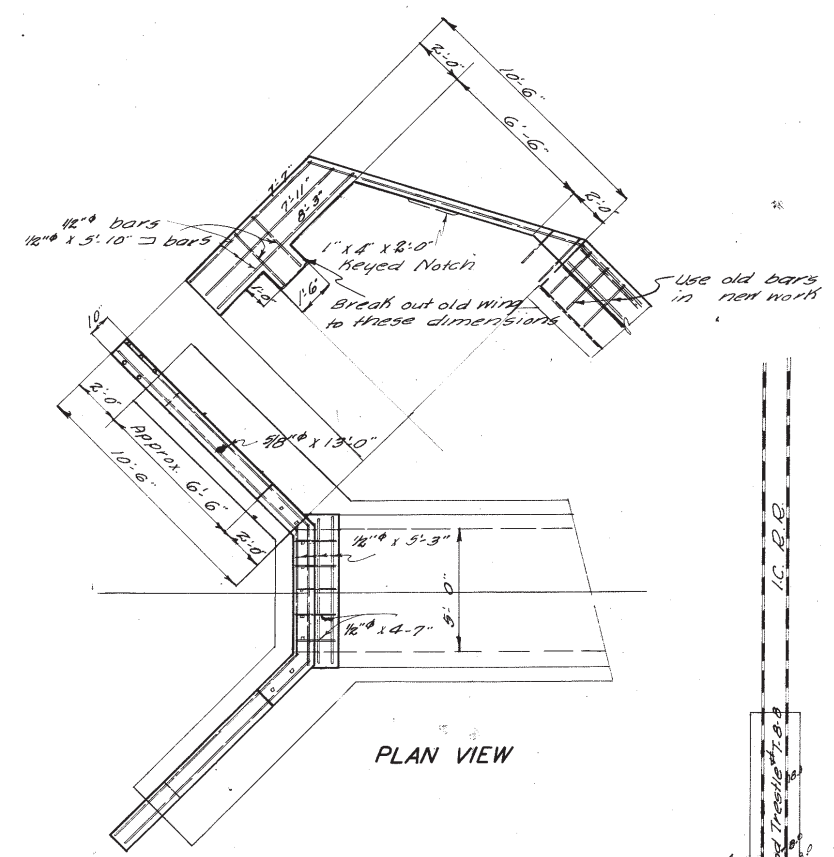
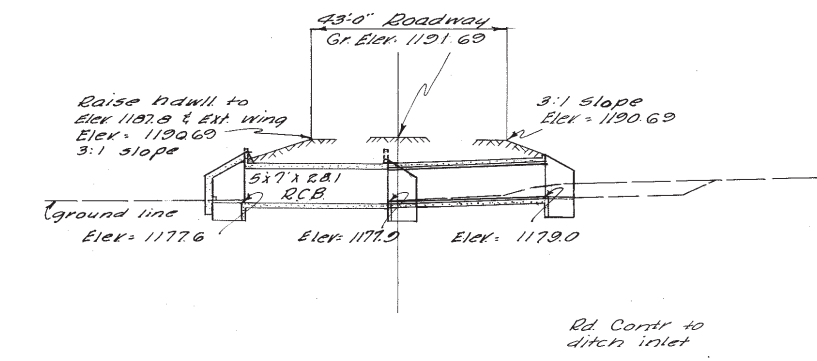
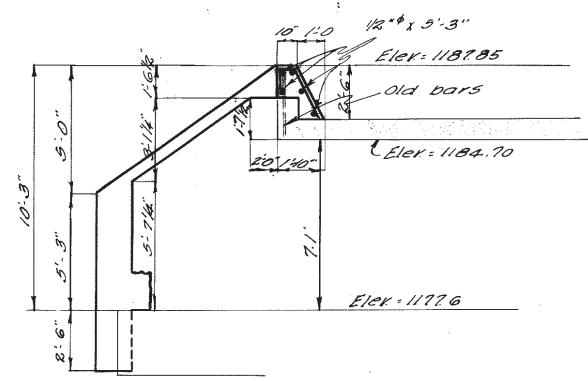
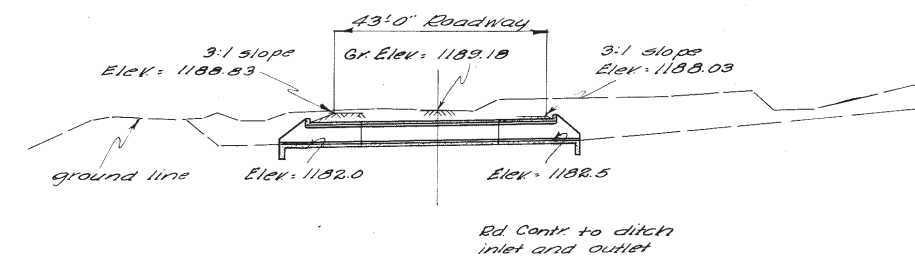
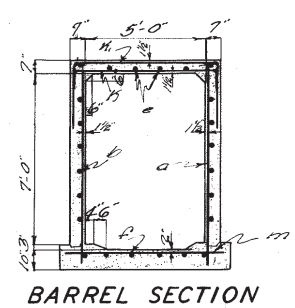


BENCH MARK No. 5 Sta. 40+15 (+) on E Hdwall of 4'x3'x28' RCB Culvert 17.5' Lt. Elev. 1180.37



SITUATION PLAN  
SCALE 1"=20'-0"

DETAIL OF RAISED PARAPET  
SCALE 1 1/4"=1'-0"



SITUATION PLAN  
SCALE 1"=20'-0"

Design No. 2148, 5'x7'x61'-6" Sta  
251+13.2 Design No. 0427, FHWA  
No. 900895

DETAILS TO BE LIKE IOWA STATE HIGHWAY COMMISSION STANDARDS <i>C&amp;P</i>			
DRAINAGE AREA	36 ac. Hilly	SECTION	in 22
SIZE AND TYPE	4'x4'x50' RCB	TOWNSHIP	Willow
DEPTH OF FILL	2'-0"	COUNTY	Cherokee
ESTIMATED PIPE	170 LIN. FT.	STATION	46+72
EXCAVATION	170 C. Y.	PROJECT	FA 744
CONCRETE	284 C. Y.	DATE	1-16-48
REINFORCING	2547 LBS.	DESIGN NO.	1148

BAR SIZES	
Mark	Size
a	3/8"
b	7/8"
c	1"
d	1 1/8"
e	1 1/4"
f	1 1/2"
g	1 3/4"
h	2"
i	2 1/4"
j	2 1/2"
k	2 3/4"
l	3"
m	3 1/2"

DETAILS TO BE LIKE IOWA STATE HIGHWAY COMMISSION STANDARDS <i>C&amp;P</i>			
DRAINAGE AREA	30 ac. Rolling	SECTION	in 11
SIZE AND TYPE	5'x7' RCB with Raised Parapet	TOWNSHIP	Willow
DEPTH OF FILL	5'-0"	COUNTY	Cherokee
ESTIMATED PIPE	50 LIN. FT.	STATION	251+13.2
EXCAVATION	50 C. Y.	PROJECT	FA 744
CONCRETE	37.25 C. Y.	DATE	1-16-48
REINFORCING	2262 LBS.	DESIGN NO.	2148