



INDEX OF SHEETS	
No.	DESCRIPTION
A Sheets	Title Sheets
A.1	Title Sheet
A.2	Location Map Sheet
C Sheets	Quantities and General Information
C.1	Estimated Project Quantities
C.2	Project Description
C.3 - 8	Tabulations (beg. with tab. of incidentals if needed)
J Sheets	Traffic Control and Staging Sheets
J.1	Traffic Control Plan
J.2	511 Travel Restrictions
J.3	Coordinated Operations
U Sheets	500 Series, Mod.Stds. and Detail Sheets
*U.1 - 17	500 Series, Modified Standards and Detail Sheets
	*Colored Sheets

18th St SW to 0.1 mi E of the E Jct US 18 in Spencer
 SCALES: As Noted

Refer to the Proposal Form for list of applicable specifications.

Value Engineering Saves. Refer to Article 1105.14 of the Specifications.



20 24	AADT	<u>12100</u>	V.P.D.
20 44	AADT	<u>14520</u>	V.P.D.
20 -	DHV	<u>-</u>	V.P.H.
TRUCKS		<u>4.7</u>	%
Total			
Design ESALs		-	

A circular professional engineer seal for Justin M. Pottorff, License No. 25733, State of Iowa. The seal features the text "LICENSED PROFESSIONAL ENGINEER" around the top inner edge and "IOWA" at the bottom. The center contains the name "JUSTIN M. POTTORFF" and the license number "25733". The seal is surrounded by a decorative border of small stars.

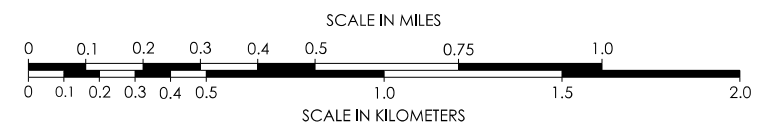
I hereby certify that this engineering document was prepared by me or under my direct personal supervision and that I am a duly licensed Professional Engineer under the laws of the State of Iowa.

Justin M. Patton 05/05/2026

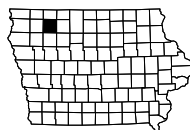
Printed or Typed Name _____

My license renewal date is December 31, 2026

Pages or sheets covered by this seal: ALL



HIGHWAY AND STREET MAP OF SPENCER IOWA



ESTIMATED PROJECT QUANTITIES AND REFERENCE NOTES

Roadway Items :

Item no.	Item Code	Item	Unit	Quantities	Estimate Reference Notes
				Estimated	
				Roadway Items	
1	2527-9263155	PRE-CUT SYMBOLS AND LEGENDS, PREFORMED THERMOPLASTIC MARKING MATERIAL	EACH	63	Refer to Tab 108-29.
2	2527-9263216	PAINTED PAVEMENT MARKINGS, MULTI-COMPONENT LIQUID	STA	255.19	Refer to Tab 108-22.
3	2527-9263225	PERMANENT TAPE MARKINGS, PREFORMED THERMOPLASTIC MARKING MATERIAL	STA	493.4	Refer to Tab 108-22.
4	2527-9270112	GROOVES CUT FOR PAVEMENT MARKINGS	STA	748.59	
5	2527-9270120	GROOVES CUT FOR SYMBOLS AND LEGENDS	EACH	63	Refer to Tab 108_29.
6	2528-8445110	TRAFFIC CONTROL	LS	1	Refer to Traffic Control Plan on Sheet J.1
7	2533-4980005	MOBILIZATION	LS	1	--

100_01D
8/15/22

PROJECT DESCRIPTION

This project is for the installation of permanent pavement markings and grooving on US 71 from 18th St SW to 0.1 mi E of the E Jct US 18 in Spencer.

EXISTING PAVEMENT																					102_05 9/29/23
Line No.	County	Route	Direction of Travel	Begin Ref. Location Sign	End Ref. Location Sign	Year	Type	Project Number	Surface Type	Surface Depth (IN)	Base Type	Base Depth (IN)	Subbase Type	Subbase Depth (IN)	Removal Type	Removal Depth (IN)	Coarse Aggregate Source	Coarse Aggregate Type	Course Aggregate Durability Class	Reinforcement Type	Remarks
1.0		US-71	NB	195.06	202.93	1931		P-256ABC	PC7	7.0							WALLINGFORD	GRAVEL	2		
2.0		US-71	NB	202.93	203.99	2021	M	MP-071-3(709)204--76-21													HMA crack filling
3.0		US-71	NB	202.93	203.99	2012		NHSX-071-8(55)--3H-21	PCC	6.0					SCR	2.0					UNBONDED PCC OVERLAY
4.0		US-71	NB	202.93	203.99	1976		MP-3743--69-21	ASC	1.0											
5.0		US-71	NB	202.93	203.99	1962		FN-935	AAC	3.0											
6.0		US-71	NB	202.93	203.99	1931		P-256ABC	PC7	7.0											
7.0		US-71	NB	7.85	7.92	2004		NHSN-18-2(82)--2R-21	AAC	1.5	AAC	1.5			MIL	2.0	MOORE	C.LST.			
8.0		US-71	NB	7.85	7.92	1982		NA	BAC	6.0											
9.0		US-71	NB	7.85	7.92	1954		NA	PCC	9.5											

PROPOSED POSTED SPEED LIMIT			
Line No.	Roadway Identification	Proposed Posted Speed	Remarks
1.0	US 71	over 45	MP 202.69 18th St SW
2.0	US 71	40-45	MP 202.92
3.0	US 71	40-45	MP 204.12 (US 18 MP 82.12)

100.27
8/15/22

<div>105_04 4/21/26</div> <div>STANDARDS</div> <div>The following Standards apply to construction work on this project.</div>		
Number	Date	Title
PM-110	10-15-24	Line Types
PM-111	04-21-20	Symbols and Legends
PM-120	10-15-24	Stop Lines and Islands
PM-210	10-15-24	Separation in Two-Lane Roadway
PM-211	10-15-24	Separation in Four-Lane Roadway
PM-521	10-15-24	Two-Lane Roadway with Right Turn Lanes
PM-522	10-15-24	Two-Lane Roadway with Left Turn Lanes
TC-1	10-15-19	Work Not Affecting Traffic (Two-Lane or Multi-Lane)
TC-202	04-18-23	Work Within 15 ft of Traveled Way
TC-233	10-17-17	Pavement Marking Operations Two-Lane
TC-402	04-18-23	Work Within 15 ft of Traveled Way
TC-418	04-18-23	Lane Closure on Divided Highway
TC-423	04-18-23	Closure of Two Adjacent Lanes on Undivided Highway
TC-429	04-18-23	Closure of Continuous Two-Way Left Turn Lane and Adjacent Lane
TC-431	04-15-25	Slow Moving Vehicle Operating in the Traffic Lane
TC-433	10-17-17	Pavement Marking Operations

PAVEMENT MARKING LINE TYPES

Line factors based on 6-inch wide continuous line.
*BCY4 - Place on the same side of the roadway to match existing markings near the project.
**NPY4 - Estimating purposes only. No Passing Zone Lines will be located in the field.
***MNY6 - Factor of 1.00 includes number of 6-inch passes to cover median nose area.
BCY4: Broken Centerline (Yellow) @ 0.17 BCY6: Broken Centerline (Yellow) @ 0.25 BLC6: Broken Line Contrast (White/Black) @ 0.50 BLW4: Broken Lane Line (White) @ 0.17 BLW6: Broken Lane Line (White) @ 0.25
CBW6: Crosswalk Bar (White) @ 10.00 CHW8: Channelizing Line (White) @ 1.33 CHW10: Channelizing Line (White) @ 1.67 CHY8: Channelizing Line (Yellow) @ 1.33 CHY10: Channelizing Line (Yellow) @ 1.67
CLW6: Crosswalk Line (White) @ 2.00 DCY4: Double Centerline (Yellow) @ 1.34 DCY6: Double Centerline (Yellow) @ 2.00 DDY4: Double Dotted Line (Yellow) @ 0.44 DDY6: Double Dotted Line (Yellow) @ 0.67
DLW4: Dotted Line (White) @ 0.22 DLW6: Dotted Line (White) @ 0.33 DLY4: Dotted Line (Yellow) @ 0.22 DLY6: Dotted Line (Yellow) @ 0.33 ELW4: Edge Line Right (White) @ 0.67
ELW6: Edge Line Right (White) @ 1.00 ELY4: Edge Line Left (Yellow) @ 0.67 ELY6: Edge Line Left (Yellow) @ 1.00 LDW8: Lane Drop (White) @ 0.33 LDW10: Lane Drop (White) @ 0.42
MNY6: Median Nose (Yellow) @ 1.00 NPY4: No Passing Zone Line (Yellow) @ 0.84 NPY6: No Passing Zone Line (Yellow) @ 1.25 RLW4: Ramp Edge Line Right (White) @ 0.67 RLW6: Ramp Edge Line Right (White) @ 1.00
RLY4: Ramp Edge Line Left (Yellow) @ 0.67 RLY6: Ramp Edge Line Left (Yellow) @ 1.00 SLW2: Stop Line (White) @ 4.00 SLW4: Solid Lane Line (White) @ 0.67 SLW6: Solid Lane Line (White) @ 1.00
SPW4: Sloped Curb 4" (White) @ 2.16 SPW6: Sloped Curb 6" (White) @ 2.28 SPY4: Sloped Curb 4" (Yellow) @ 2.16 SPY6: Sloped Curb 6" (Yellow) @ 2.28 STW6: Standard Curb 6" (Yellow) @ 2.03
STY6: Standard Curb 6" (Yellow) @ 2.03 YLW2: Yield Line (White) @ 1.15

Road ID	Station From	Station To	Marking Type	Groove Marking Needed?	Groove Qty. (STA)	CHW10 (STA)	CHW10 Factored (STA)	CHY10 (STA)	CHY10 Factored (STA)	CLW6 (STA)	CLW6 Factored (STA)	DCY6 (STA)	DCY6 Factored (STA)	ELW6 (STA)	ELW6 Factored (STA)	ELY6 (STA)	ELY6 Factored (STA)	MNY6*** (STA)	MNY6*** Factored (STA)	NPY6** (STA)	NPY6** Factored (STA)	SLW2 (STA)	SLW2 Factored (STA)	SLW6 (STA)	SLW6 Factored (STA)
US 71 N/S	759+50.00	796+70.00	Thermoplastic	Yes	301.28	91.30	152.47	82.87	138.39									0.18	0.18			2.56	10.24		
US 71 E/W	1785+70.00	1840+40.00	Thermoplastic	Yes	192.12	69.15	115.48	20.79	34.72	6.69	13.38							0.26	0.26			7.07	28.28		
Marking Type Thermoplastic:					493.4		267.95		173.11		13.38							0.44					38.52		
Number of records:2																									
US 71 N/S	759+50.00	796+70.00	Waterborne/Solvent Paint	Yes	71.08							0.55	1.10	39.91	39.91	14.43	14.43							15.64	15.64
US 71 E/W	1785+70.00	1840+40.00	Waterborne/Solvent Paint	Yes	184.11							13.07	26.14	80.81	80.81	17.20	17.20			34.21	42.76			17.20	17.20
Marking Type Waterborne/Solvent Paint:					255.19							27.24		120.72		31.63				42.76					32.84
Number of records: 2																									
Total:					748.59		267.95		173.11		13.38		27.24		120.72		31.63		0.44		42.76		38.52		32.84

PAVEMENT MARKING SYMBOLS AND LEGENDS Refer to PM-111					
Line No.	Roadway Identification	Pavement Symbol	Quantity (EA)	Groove Marking Needed?	Remarks
1.0	US 71 N/S	STAW	4	Yes	
2.0	US 71 N/S	RTAW	6	Yes	
3.0	US 71 N/S	LTAW	4	Yes	
4.0	US 71 N/S	CSLW	2	Yes	
5.0	US 71 E/W	STAW	6	Yes	
6.0	US 71 E/W	RTAW	11	Yes	
7.0	US 71 E/W	LTAW	29	Yes	
8.0	US 71 E/W	CSLW	1	Yes	
Total:			63		

108_29
4/15/25

262_069
9/28/22

UTILITIES (NOT A POINT 25 PROJECT)

This is NOT a POINT 25 project and is not subject to the provisions of IAC 761-115.25.

<div>108_23A 8/15/22</div> <div>TRAFFIC CONTROL PLAN</div> <div><div>1. Through traffic will be maintained on the project at all times.</div><div>2. Traffic control on this project shall be found in accordance with the TC series of Standard Road Plans found in Tab. 105-4 and/or appropriate Detail Sheets included in the plans.</div><div>For additional complementary information, refer to part VI of the Manual on Uniform Traffic Control Devices and the current Standard Specifications.</div><div>3. The contractor shall coordinate traffic control with other projects in the area.</div><div>4. Existing pavement markings that conflict with any TC Road Standard shall be removed.</div></div>
--

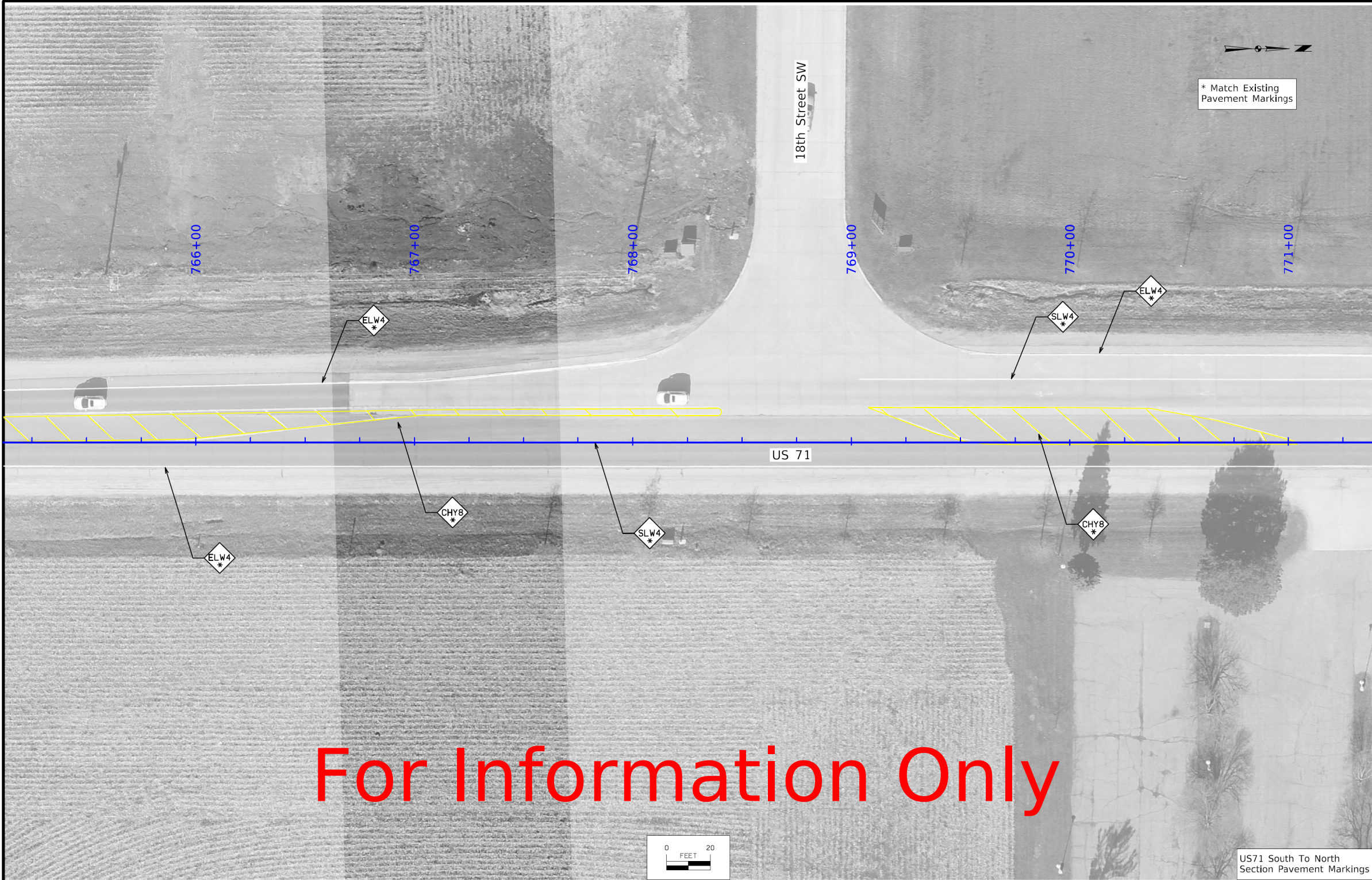
511 TRAVEL RESTRICTIONS													108_25 3/28/24
Line No.	Route	Direction	County	Location Description	Feature Crossed	Object Type	Maint. Bridge No. or Structure ID or FHWA No.	Type of Restriction	Existing Measurement	Construction Measurement	Construction Measurement as Signed	Projected As Built Measurement	Remarks
	US 71	NB	Clay	18th St SW to 0.1 mi E of the E Jct US	None	Traffic Control Device		None					

<div>111_01 10/14/22</div> <div>COORDINATED OPERATIONS</div> <div>Other work in progress during the same period of time will include the construction of the projects listed. Coordinate operations with those of other contractors working within the same area.</div>	
Project	Type of Work
HSIPX-018-2(171)--3L-21	Median Crossover
HSIPX-018-2(142)--3L-21	PCC Pavement - Grade and New



FILE NO.	ENGLISH	DESIGN TEAM IOWA DOT/SNYDER	CLAY COUNTY	PROJECT NUMBER NHSN-071-8(064)--2R-21	SHEET NUMBER N.1
1:32:06 PM	6/7/2023	jfrederiksen	pw:\\projectwise.dot.int.lan:PWMain\\Documents\\Projects\\2107101023\\TrafficAndSafety\\TrafficEngineering_064_Pavement Markings\\CADD Files\\SHT_21071064_N01-N07.dgn		

FILE NO.	ENGLISH	DESIGN TEAM DISTRICT 3	CLAY COUNTY	PROJECT NUMBER NHSN-071-8(065)--2R-21	SHEET NUMBER U.1
3:50:17 PM	4/7/2026	jprofer	pw:\\NTPwint1.dot.int.lan:PWMain\\Documents\\Projects\\2107102025\\DistrictDesign\\NHSN-071-8(065)--2R-21\\U SHEETS (065).dgn		



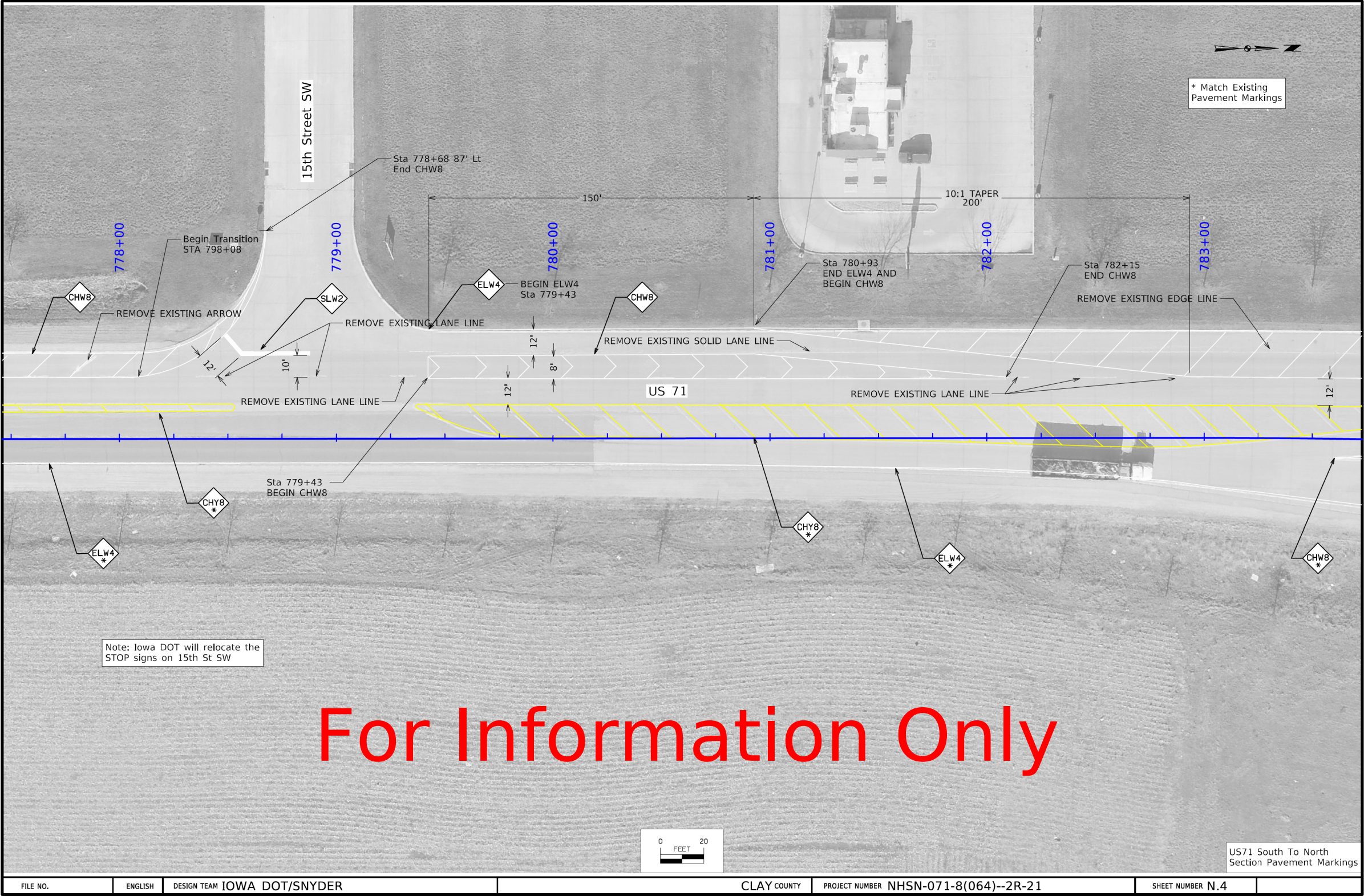
FILE NO.	ENGLISH	DESIGN TEAM IOWA DOT/SNYDER	CLAY COUNTY	PROJECT NUMBER NHSN-071-8(064)--2R-21	SHEET NUMBER N.2
1:32:15 PM	6/7/2023	jfrederiksen	pw:\\projectwise.dot.int.lan:PWMain\\Documents\\Projects\\2107101023\\TrafficAndSafety\\TrafficEngineering_064_Pavement Markings\\CADD Files\\SHT_21071064_N01-N07.dgn		

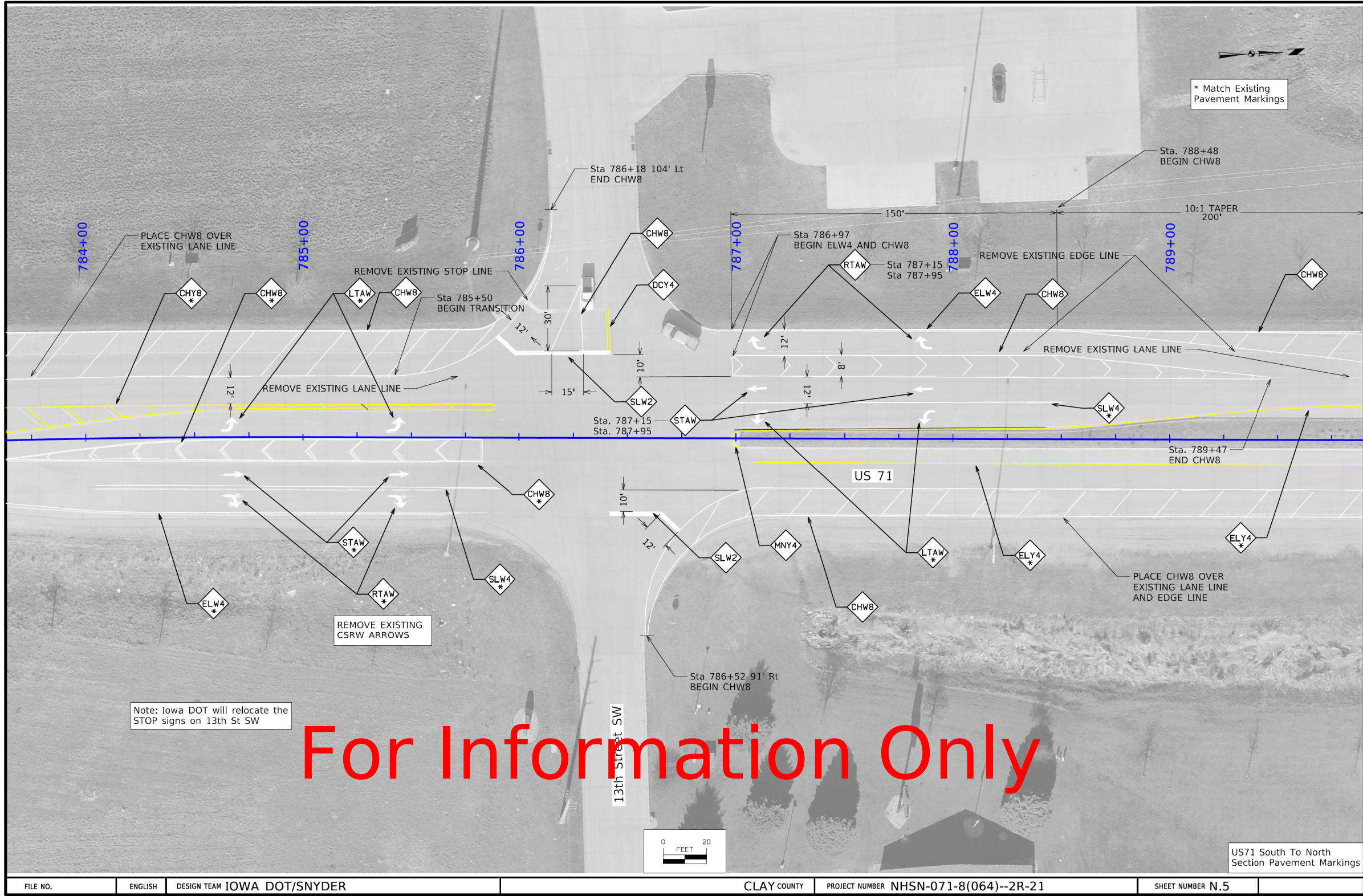
FILE NO.	ENGLISH	DESIGN TEAM DISTRICT 3	CLAY COUNTY	PROJECT NUMBER NHSN-071-8(065)--2R-21	SHEET NUMBER U.2
3:50:20 PM	4/7/2026	jprofer	pw:\\NTPwint1.dot.int.lan:PWMain\\Documents\\Projects\\2107102025\\DistrictDesign\\NHSN-071-8(065)--2R-21\\U SHEETS (065).dgn		



FILE NO.	ENGLISH	DESIGN TEAM IOWA DOT/SNYDER	CLAY COUNTY	PROJECT NUMBER NHSN-071-8(064)--2R-21	SHEET NUMBER N.3
1:32:23 PM	6/7/2023	jfrederiksen	pw:\projectwise.dot.int.lan:PWMMain\Documents\Projects\2107101023\TrafficAndSafety\TrafficEngineering\064_Pavement Markings\CADD Files\SH_T_21071064_N01-N07.dgn		

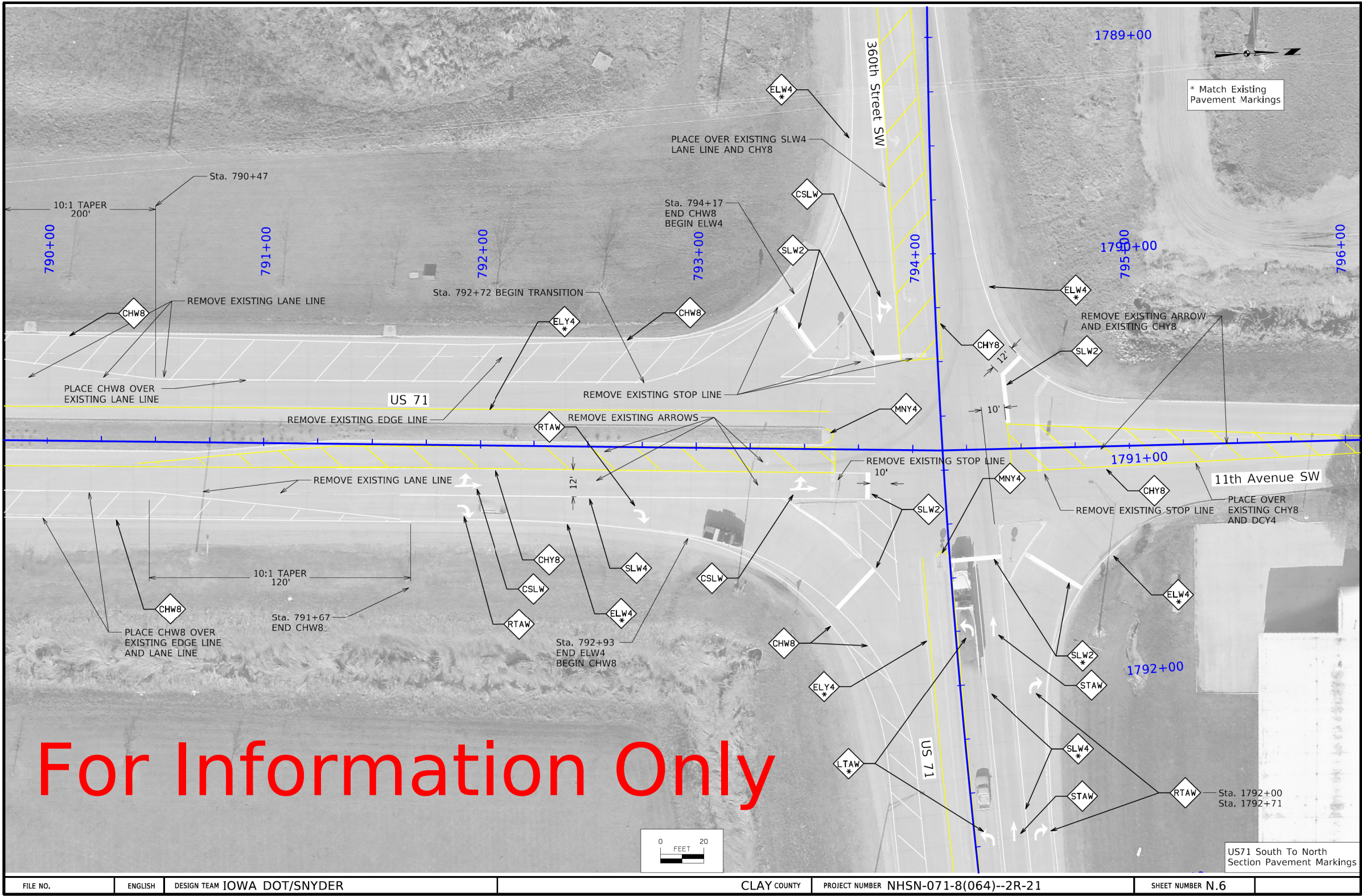
FILE NO.	ENGLISH	DESIGN TEAM DISTRICT 3	CLAY COUNTY	PROJECT NUMBER NHSN-071-8(065)--2R-21	SHEET NUMBER U.3
3:50:24 PM	4/7/2026	jprofer	pw:\NTPwint1.dot.int.lan:PWMMain\Documents\Projects\2107102025\DistrictDesign\NHSN-071-8(065)--2R-21\U SHEETS (065).dgn		





FILE NO.	ENGLISH	DESIGN TEAM IOWA DOT/SNYDER	CLAY COUNTY	PROJECT NUMBER NHSN-071-8(064)--2R-21	SHEET NUMBER N.5
1:32:40 PM	6/7/2023	jfrederiksen pw:\projectwise.dot.int\lan:PWMMain\Documents\Projects\2107101023\TrafficAndSafety\TrafficEngineering\064_Pavement Markings\CADD Files\SH_21071064_N01-N07.dgn			

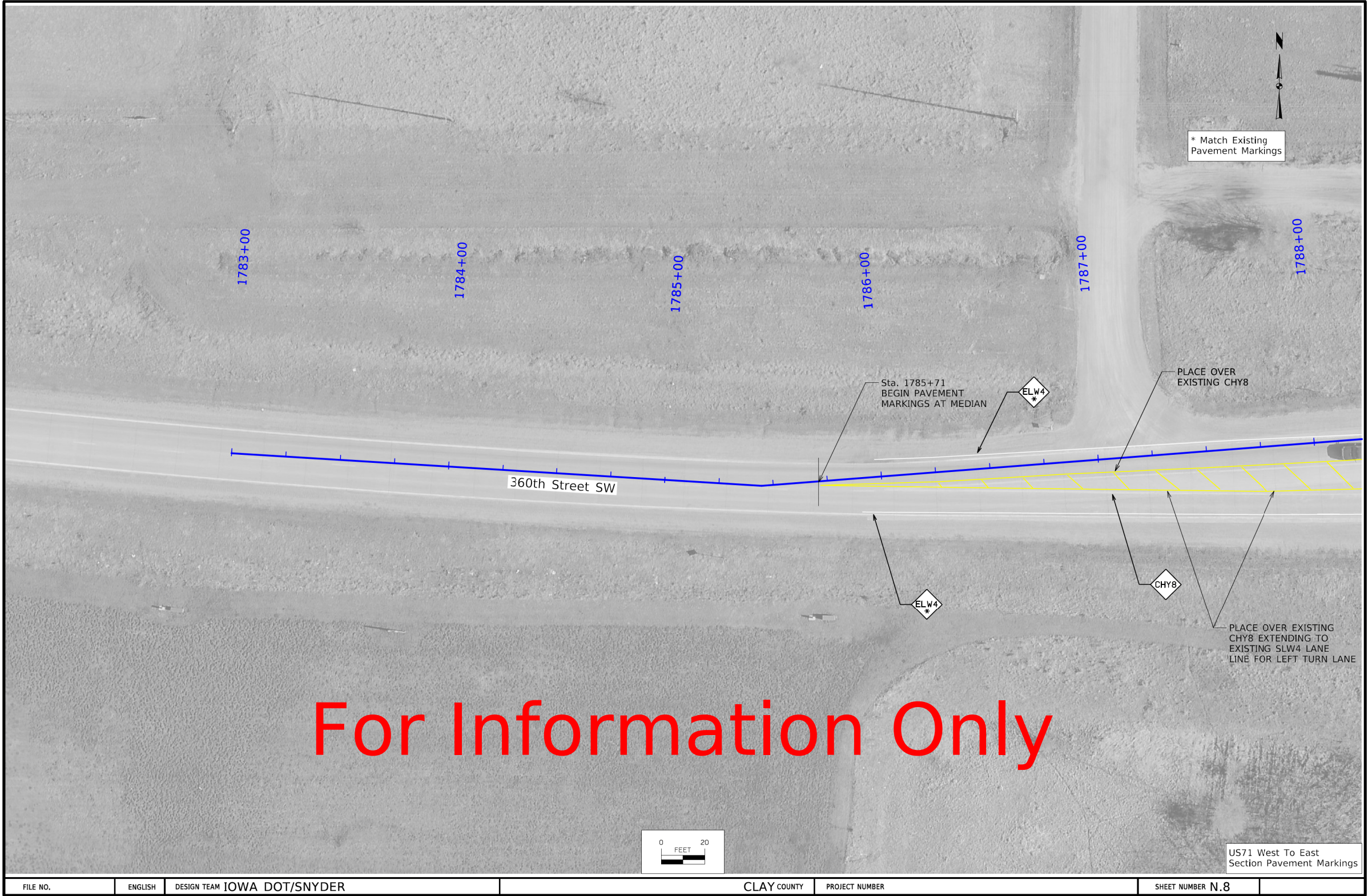
FILE NO.	ENGLISH	DESIGN TEAM DISTRICT 3	CLAY COUNTY	PROJECT NUMBER NHSN-071-8(065)--2R-21	SHEET NUMBER U.5
3:50:30 PM	4/7/2026	jprofer pw:\NTPwint1.dot.int\lan:PWMMain\Documents\Projects\2107102025\DistrictDesign\NHSN-071-8(065)--2R-21\U SHEETS (065).dgn			





FILE NO.	ENGLISH	DESIGN TEAM IOWA DOT/SNYDER	CLAY COUNTY	PROJECT NUMBER NHSN-071-8(064)--2R-21	SHEET NUMBER N.7
1:32:57 PM	6/7/2023	jfrederiksen	pw:\projectwise.dot.int.lan:PWMain\Documents\Projects\2107101023\TrafficAndSafety\TrafficEngineering\064_Pavement Markings\CADD Files\SHT_21071064_N01-N07.dgn		

FILE NO.	ENGLISH	DESIGN TEAM DISTRICT 3	CLAY COUNTY	PROJECT NUMBER NHSN-071-8(065)--2R-21	SHEET NUMBER U.7
3:50:37 PM	4/7/2026	jprofer	pw:\NTPwint1.dot.int.lan:PWMain\Documents\Projects\2107102025\DistrictDesign\NHSN-071-8(065)--2R-21\U SHEETS (065).dgn		

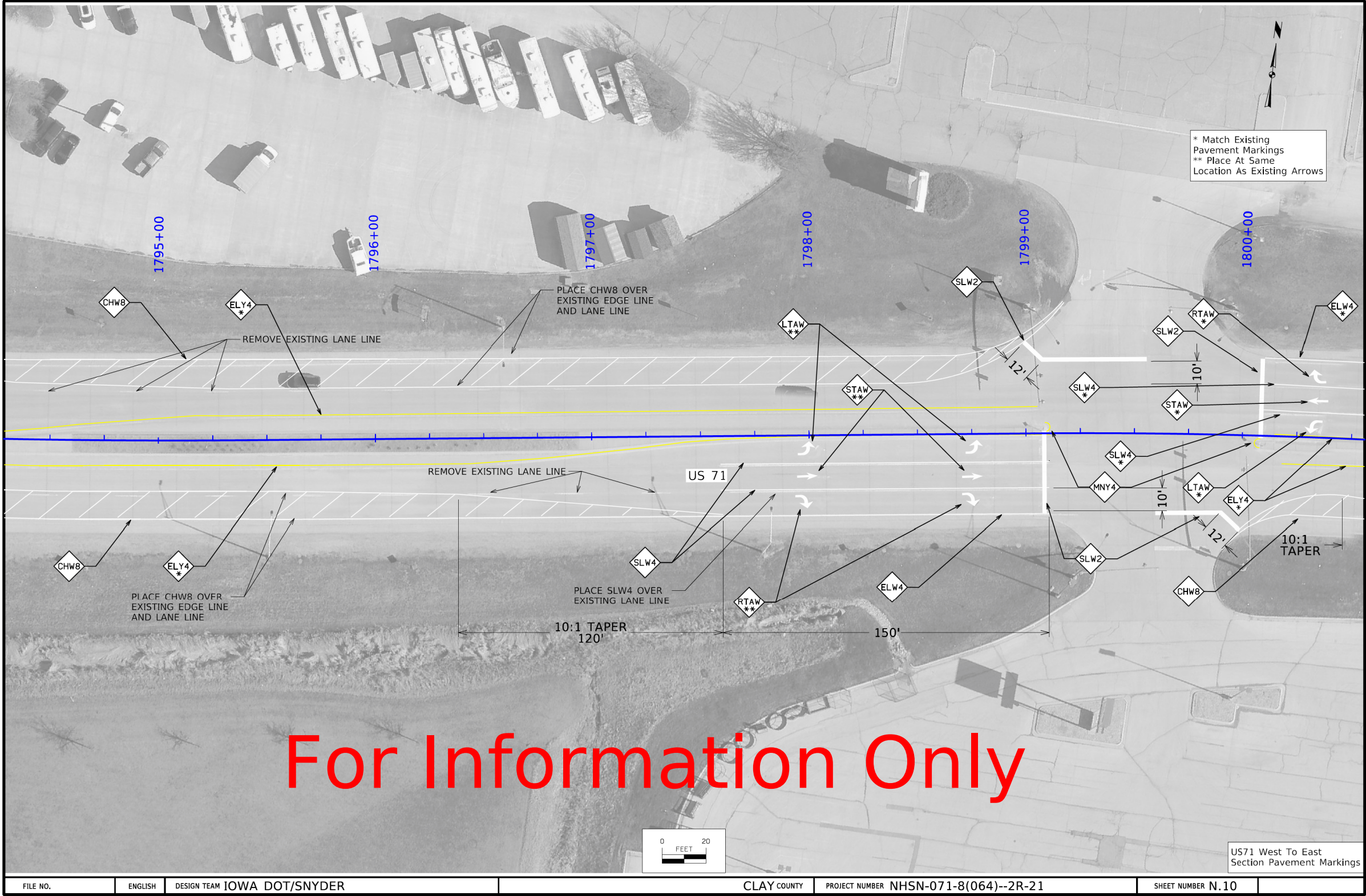


For Information Only

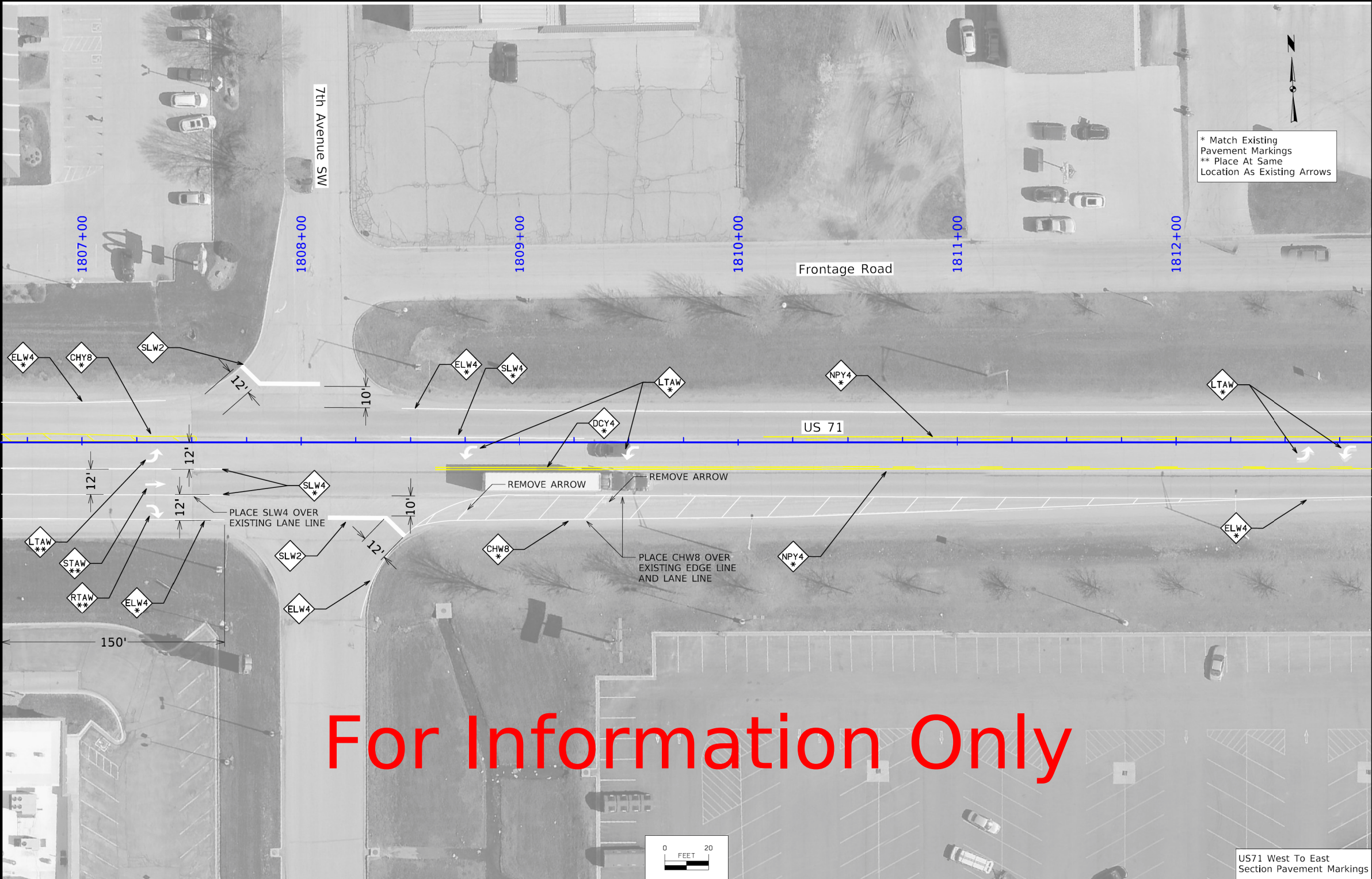
FILE NO.	ENGLISH	DESIGN TEAM IOWA DOT/SNYDER	CLAY COUNTY	PROJECT NUMBER	SHEET NUMBER N.8
1:33:36 PM	6/7/2023	jfrederiksen pw:\projectwise.dot.int.lan:PWMain\Documents\Projects\2107101023\TrafficAndSafety\TrafficEngineering\064_Pavement Markings\CADD Files\SHI_21071064_N08-N17.dgn			

FILE NO.	ENGLISH	DESIGN TEAM DISTRICT 3	CLAY COUNTY	PROJECT NUMBER NHSN-071-8(065)--2R-21	SHEET NUMBER U.8
3:50:41 PM	4/7/2026	jprofer pw:\NTPwint1.dot.int.lan:PWMain\Documents\Projects\2107102025\DistrictDesign\NHSN-071-8(065)--2R-21\U SHEETS (065).dgn			

This diagram shows an aerial view of a road intersection with various pavement markings and engineering annotations. The main road is labeled 'US 71' and runs horizontally. A vertical road, '11th Avenue SW', intersects it. Another road, '360th Street SW', branches off to the left. Stationing markers are visible along the roads, including '1789+00', '1791+00', '1792+00', '1793+00', '1794+00', '1795+00', '1796+00', '1797+00', '1798+00', '1799+00', '1800+00', '1801+00', '1802+00', '1803+00', '1804+00', '1805+00', '1806+00', '1807+00', '1808+00', '1809+00', '1810+00', '1811+00', '1812+00', '1813+00', '1814+00', '1815+00', '1816+00', '1817+00', '1818+00', '1819+00', '1820+00', '1821+00', '1822+00', '1823+00', '1824+00', '1825+00', '1826+00', '1827+00', '1828+00', '1829+00', '1830+00', '1831+00', '1832+00', '1833+00', '1834+00', '1835+00', '1836+00', '1837+00', '1838+00', '1839+00', '1840+00', '1841+00', '1842+00', '1843+00', '1844+00', '1845+00', '1846+00', '1847+00', '1848+00', '1849+00', '1850+00', '1851+00', '1852+00', '1853+00', '1854+00', '1855+00', '1856+00', '1857+00', '1858+00', '1859+00', '1860+00', '1861+00', '1862+00', '1863+00', '1864+00', '1865+00', '1866+00', '1867+00', '1868+00', '1869+00', '1870+00', '1871+00', '1872+00', '1873+00', '1874+00', '1875+00', '1876+00', '1877+00', '1878+00', '1879+00', '1880+00', '1881+00', '1882+00', '1883+00', '1884+00', '1885+00', '1886+00', '1887+00', '1888+00', '1889+00', '1890+00', '1891+00', '1892+00', '1893+00', '1894+00', '1895+00', '1896+00', '1897+00', '1898+00', '1899+00', '1900+00', '1901+00', '1902+00', '1903+00', '1904+00', '1905+00', '1906+00', '1907+00', '1908+00', '1909+00', '1910+00', '1911+00', '1912+00', '1913+00', '1914+00', '1915+00', '1916+00', '1917+00', '1918+00', '1919+00', '1920+00', '1921+00', '1922+00', '1923+00', '1924+00', '1925+00', '1926+00', '1927+00', '1928+00', '1929+00', '1930+00', '1931+00', '1932+00', '1933+00', '1934+00', '1935+00', '1936+00', '1937+00', '1938+00', '1939+00', '1940+00', '1941+00', '1942+00', '1943+00', '1944+00', '1945+00', '1946+00', '1947+00', '1948+00', '1949+00', '1950+00', '1951+00', '1952+00', '1953+00', '1954+00', '1955+00', '1956+00', '1957+00', '1958+00', '1959+00', '1960+00', '1961+00', '1962+00', '1963+00', '1964+00', '1965+00', '1966+00', '1967+00', '1968+00', '1969+00', '1970+00', '1971+00', '1972+00', '1973+00', '1974+00', '1975+00', '1976+00', '1977+00', '1978+00', '1979+00', '1980+00', '1981+00', '1982+00', '1983+00', '1984+00', '1985+00', '1986+00', '1987+00', '1988+00', '1989+00', '1990+00', '1991+00', '1992+00', '1993+00', '1994+00', '1995+00', '1996+00', '1997+00', '1998+00', '1999+00', '2000+00', '2001+00', '2002+00', '2003+00', '2004+00', '2005+00', '2006+00', '2007+00', '2008+00', '2009+00', '2010+00', '2011+00', '2012+00', '2013+00', '2014+00', '2015+00', '2016+00', '2017+00', '2018+00', '2019+00', '2020+00', '2021+00', '2022+00', '2023+00', '2024+00', '2025+00', '2026+00', '2027+00', '2028+00', '2029+00', '2030+00', '2031+00', '2032+00', '2033+00', '2034+00', '2035+00', '2036+00', '2037+00', '2038+00', '2039+00', '2040+00', '2041+00', '2042+00', '2043+00', '2044+00', '2045+00', '2046+00', '2047+00', '2048+00', '2049+00', '2050+00', '2051+00', '2052+00', '2053+00', '2054+00', '2055+00', '2056+00', '2057+00', '2058+00', '2059+00', '2060+00', '2061+00', '2062+00', '2063+00', '2064+00', '2065+00', '2066+00', '2067+00', '2068+00', '2069+00', '2070+00', '2071+00', '2072+00', '2073+00', '2074+00', '2075+00', '2076+00', '2077+00', '2078+00', '2079+00', '2080+00', '2081+00', '2082+00', '2083+00', '2084+00', '2085+00', '2086+00', '2087+00', '2088+00', '2089+00', '2090+00', '2091+00', '2092+00', '2093+00', '2094+00', '2095+00', '2096+00', '2097+00', '2098+00', '2099+00', '2100+00', '2101+00', '2102+00', '2103+00', '2104+00', '2105+00', '2106+00', '2107+00', '2108+00', '2109+00', '2110+00', '2111+00', '2112+00', '2113+00', '2114+00', '2115+00', '2116+00', '2117+00', '2118+00', '2119+00', '2120+00', '2121+00', '2122+00', '2123+00', '2124+00', '2125+00', '2126+00', '2127+00', '2128+00', '2129+00', '2130+00', '2131+00', '2132+00', '2133+00', '2134+00', '2135+00', '2136+00', '2137+00', '2138+00', '2139+00', '2140+00', '2141+00', '2142+00', '2143+00', '2144+00', '2145+00', '2146+00', '2147+00', '2148+00', '2149+00', '2150+00', '2151+00', '2152+00', '2153+00', '2154+00', '2155+00', '2156+00', '2157+00', '2158+00', '2159+00', '2160+00', '2161+00', '2162+00', '2163+00', '2164+00', '2165+00', '2166+00', '2167+00', '2168+00', '2169+00', '2170+00', '2171+00', '2172+00', '2173+00', '2174+00', '2175+00', '2176+00', '2177+00', '2178+00', '2179+00', '2180+00', '2181+00', '2182+00', '2183+00', '2184+00', '2185+00', '2186+00', '2187+00', '2188+00', '2189+00', '2190+00', '2191+00', '2192+00', '2193+00', '2194+00', '2195+00', '2196+00', '2197+00', '2198+00', '2199+00', '2200+00', '2201+00', '2202+00', '2203+00', '2204+00', '2205+00', '2206+00', '2207+00', '2208+00', '2209+00', '2210+00', '2211+00', '2212+00', '2213+00', '2214+00', '2215+00', '2216+00', '2217+00', '2218+00', '2219+00', '2220+00', '2221+00', '2222+00', '2223+00', '2224+00', '2225+00', '2226+00', '2227+00', '2228+00', '2229+00', '2230+00', '2231+00', '2232+00', '2233+00', '2234+

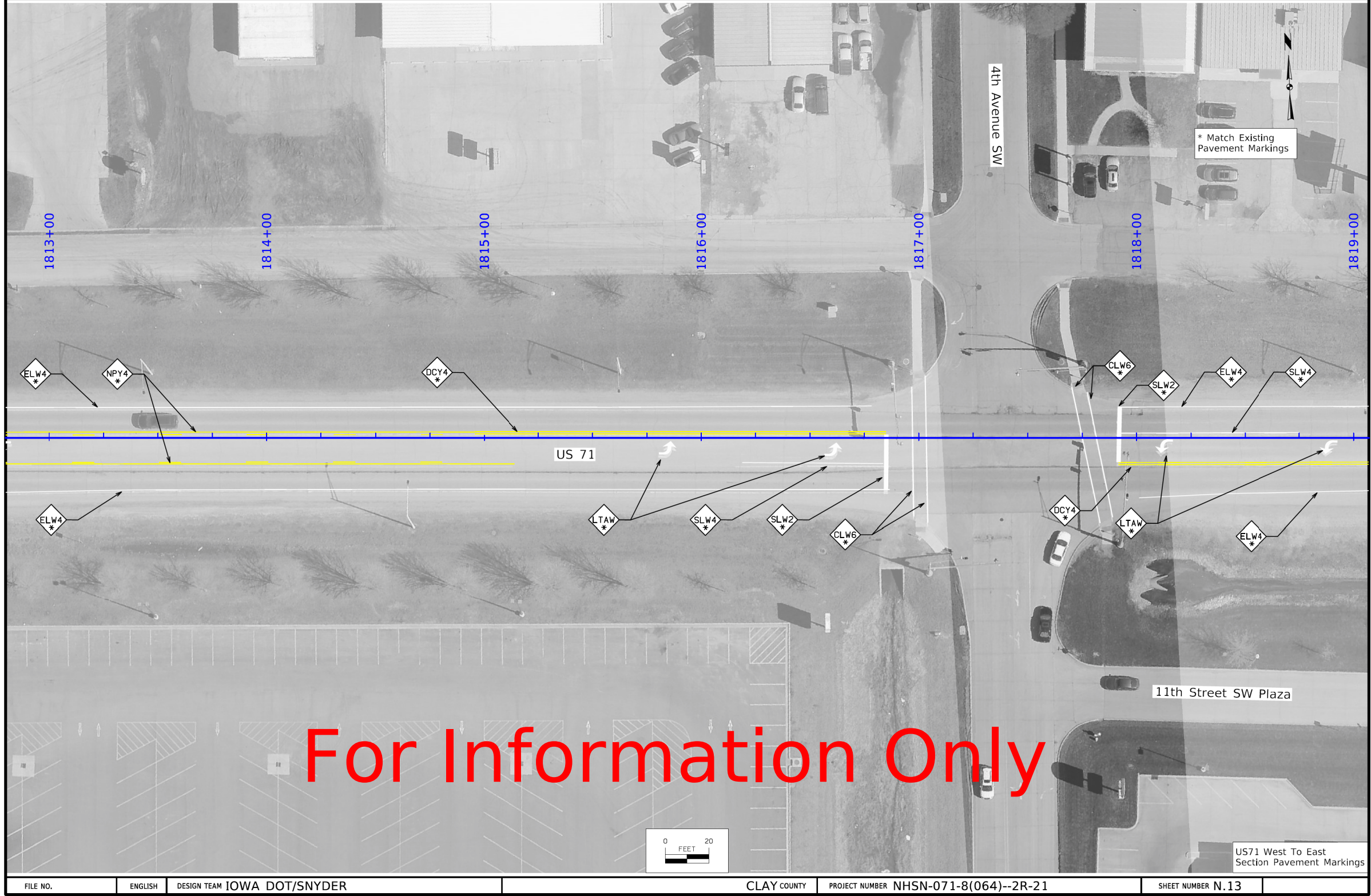




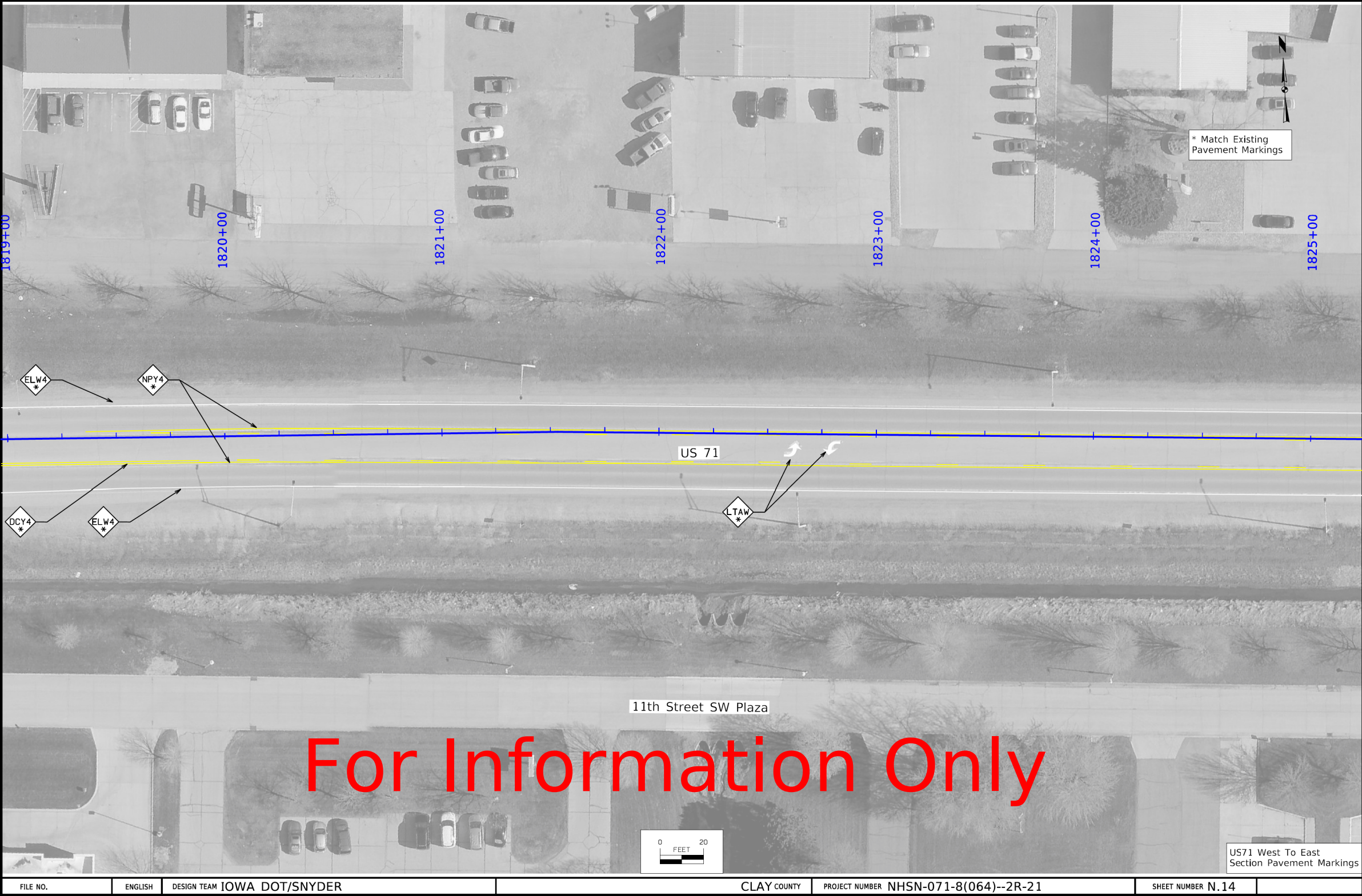


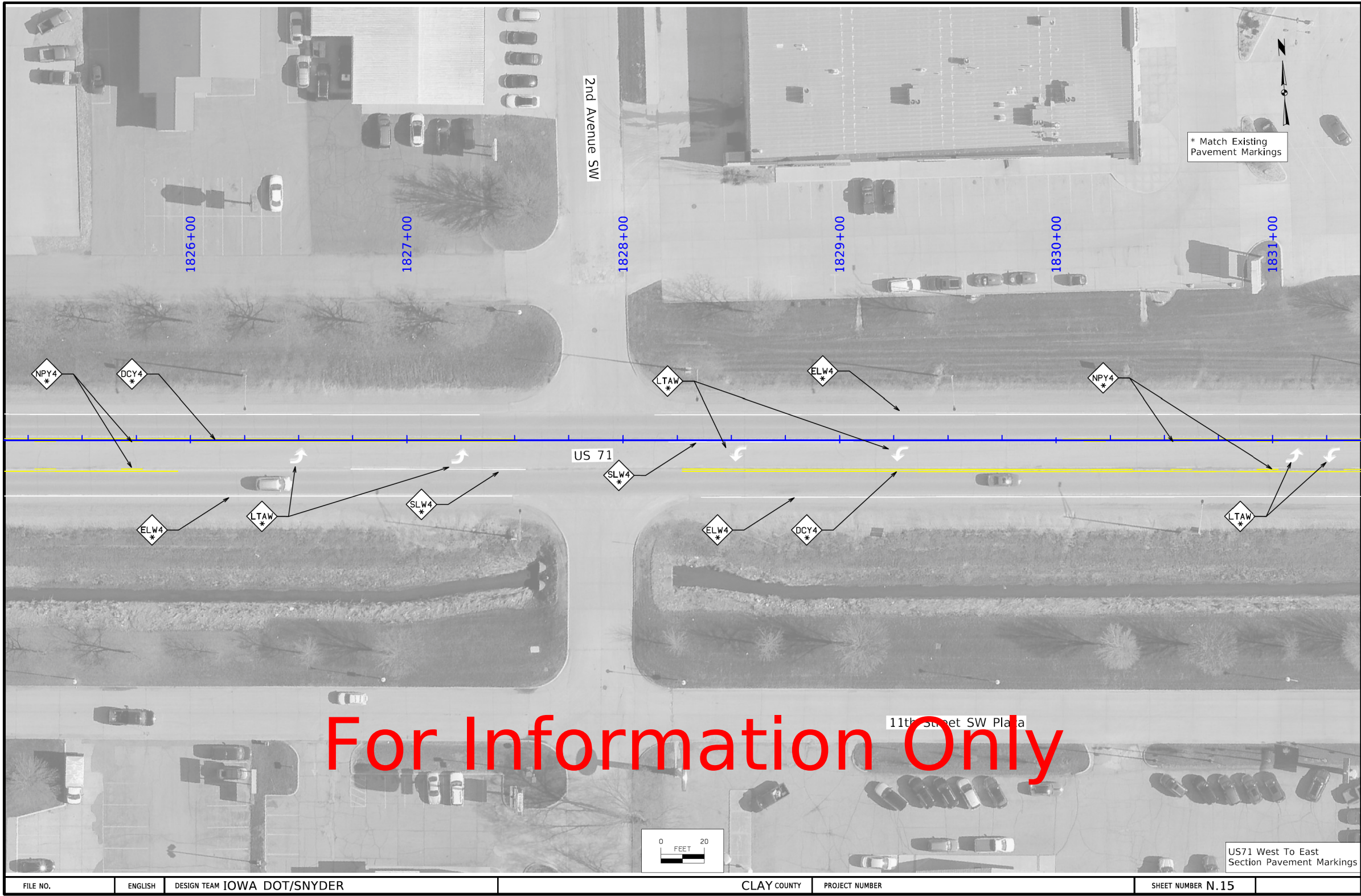
FILE NO.	ENGLISH	DESIGN TEAM IOWA DOT/SNYDER	CLAY COUNTY	PROJECT NUMBER NHSN-071-8(064)--2R-21	SHEET NUMBER N.12
1:34:13 PM	6/7/2023	jfrederiksen pw:\projectwise.dot.int.lan:PWMain\Documents\Projects\2107101023\TrafficAndSafety\TrafficEngineering\064_Pavement Markings\CADD Files\SHT_21071064_N08-N17.dgn			

FILE NO.	ENGLISH	DESIGN TEAM DISTRICT 3	CLAY COUNTY	PROJECT NUMBER NHSN-071-8(065)--2R-21	SHEET NUMBER U.12
3:50:55 PM	4/7/2026	jprofer pw:\NTPwint1.dot.int.lan:PWMain\Documents\Projects\2107102025\DistrictDesign\NHSN-071-8(065)--2R-21\U SHEETS (065).dgn			

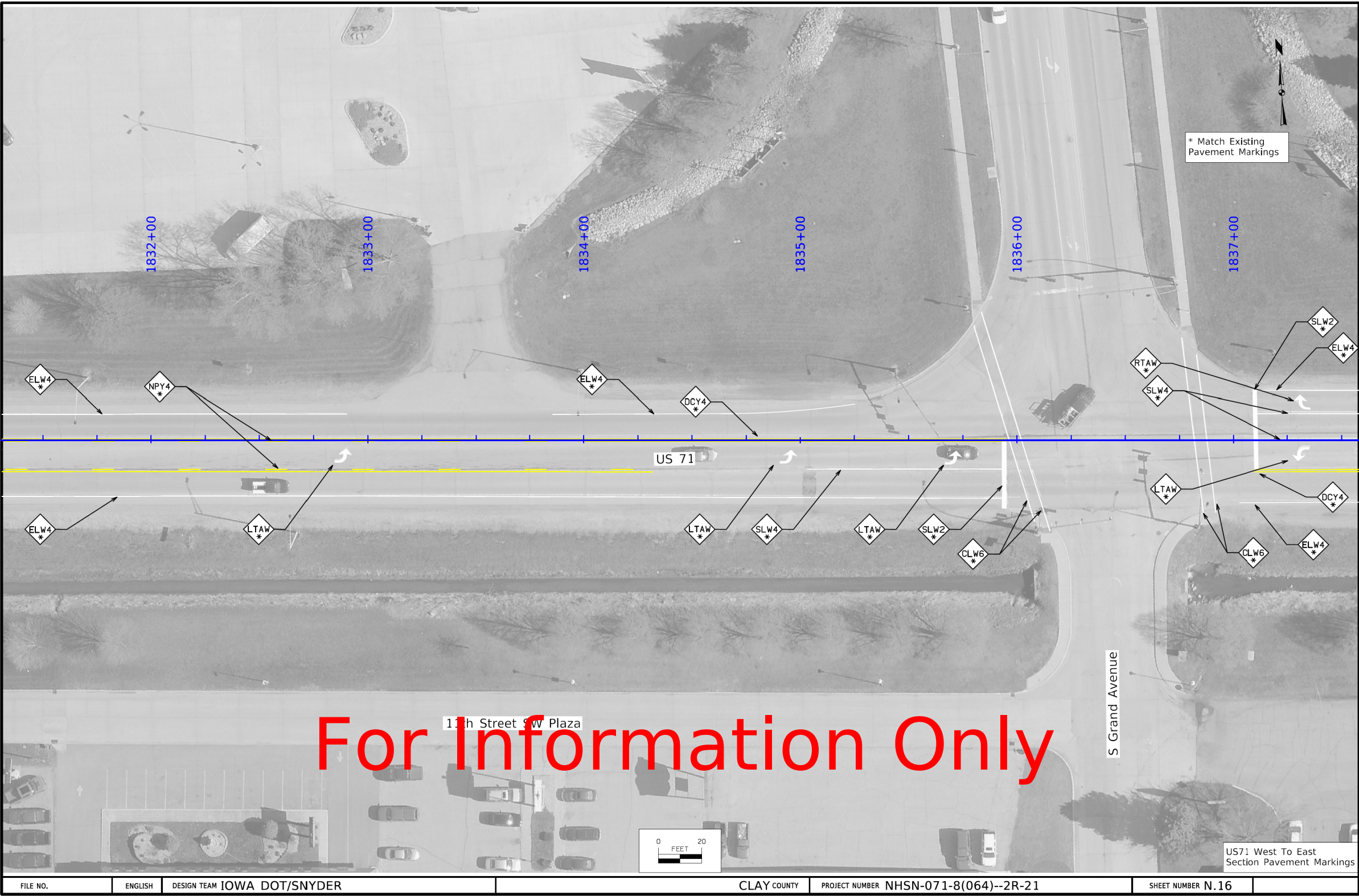


FILE NO.	ENGLISH	DESIGN TEAM IOWA DOT/SNYDER	CLAY COUNTY	PROJECT NUMBER NHSN-071-8(064)--2R-21	SHEET NUMBER N.13
1:34:21 PM	6/7/2023	jfrederiksen pw:\projectwise.dot.int.lan:PWMain\Documents\Projects\2107101023\TrafficAndSafety\TrafficEngineering\064_Pavement Markings\CADD Files\SHI_21071064_N08-N17.dgn			





FILE NO.	ENGLISH	DESIGN TEAM IOWA DOT/SNYDER	CLAY COUNTY	PROJECT NUMBER	SHEET NUMBER N.15
1:34:39 PM	6/7/2023	jfrederiksen pw:\projectwise.dot.int.lan:PWMain\Documents\Projects\2107101023\TrafficAndSafety\TrafficEngineering\064_Pavement Markings\CADD Files\SH21071064_N08-N17.dgn			



FILE NO.	ENGLISH	DESIGN TEAM IOWA DOT/SNYDER	CLAY COUNTY	PROJECT NUMBER NHSN-071-8(064)--2R-21	SHEET NUMBER N.16
1:34:48 PM	6/7/2023	jfrederiksen	pw:\projectwise.dot.int.lan:PWMain\Documents\Projects\2107101023\TrafficAndSafety\TrafficEngineering\064_Pavement Markings\CADD Files\SHI_21071064_N08-N17.dgn		



FILE NO.	ENGLISH	DESIGN TEAM IOWA DOT/SNYDER	CLAY COUNTY	PROJECT NUMBER	SHEET NUMBER N.17
1:34:57 PM	6/7/2023	jfrederiksen	pw:\\projectwise.dot.int.lan:PWMain\\Documents\\Projects\\2107101023\\TrafficAndSafety\\TrafficEngineering_064_Pavement Markings\\CADD Files\\SHT_21071064_N08-N17.dgn		

FILE NO.	ENGLISH	DESIGN TEAM DISTRICT 3	CLAY COUNTY	PROJECT NUMBER NHSN-071-8(065)--2R-21	SHEET NUMBER U.17
3:51:12 PM	4/7/2026	jprofer	pw:\\NTPwint1.dot.int.lan:PWMain\\Documents\\Projects\\2107102025\\DistrictDesign\\NHSN-071-8(065)--2R-21\\U SHEETS (065).dgn		