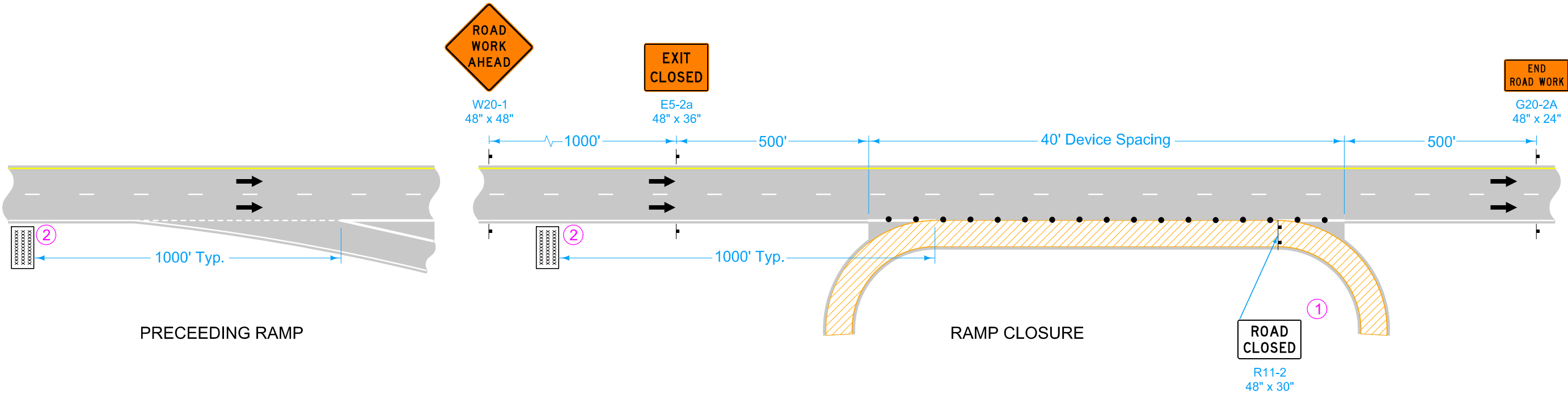


- ① A vehicle with an amber revolving light or amber strobe light may be substituted for the Type III barricade.
- ② Place Portable Dynamic Message Sign 3 calendar days prior to ramp closure. Leave in place until ramp is re-opened. The Engineer will determine the message to display.



Possible Contract Items:  
Safety Closure  
Traffic Control  
Portable Dynamic Message Sign

Possible Tabulation:  
108-13A

LEGEND

Type III Barricade

Traffic Sign

42" Channelizer

Direction of Traffic

Work Area

Portable Dynamic Message Sign

IOWA IDOT

STANDARD ROAD PLAN

REVISIONS:

Added Portable Dynamic Message Signs and new note 2.  
Retitled standard.

APPROVED BY DESIGN METHODS ENGINEER

EXIT RAMP CLOSURE

REVISION

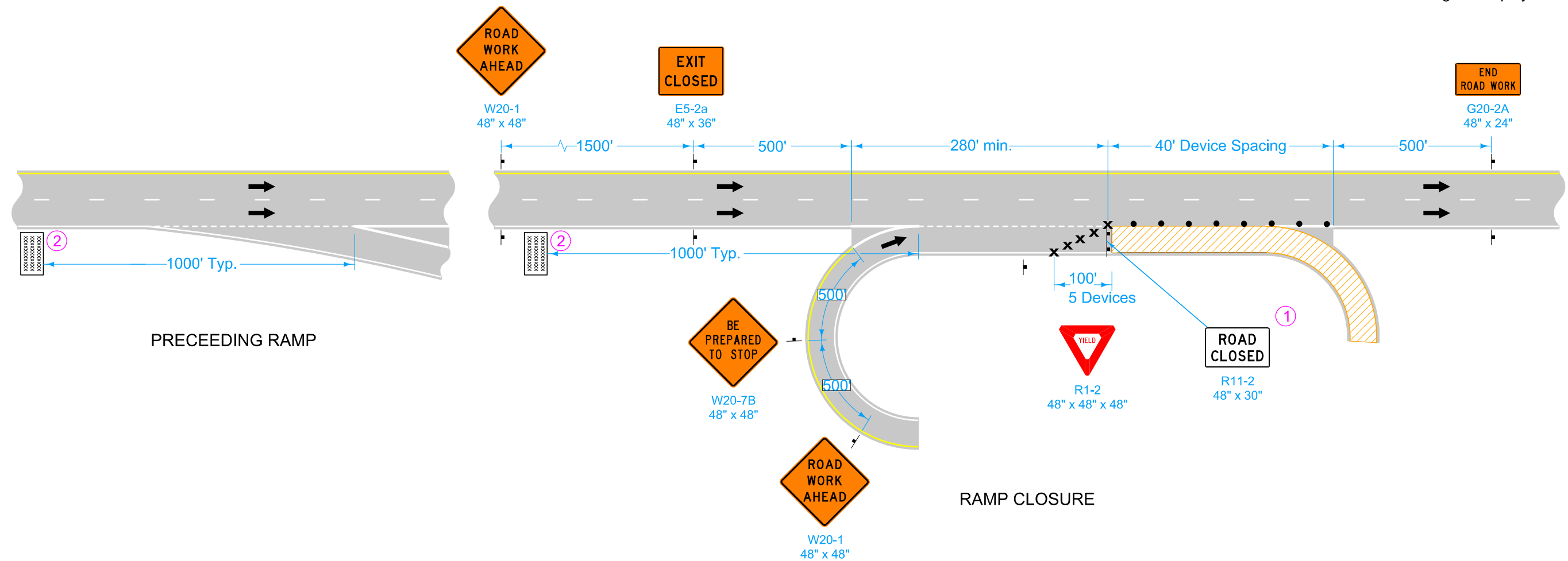
504-21-20

TC-417

SHEET 1 of 3





- ① A vehicle with an amber revolving light or amber strobe light may be substituted for the Type III barricade.
- ② Place Portable Dynamic Message Sign 3 calendar days prior to ramp closure. Leave in place until ramp is re-opened. The Engineer will determine the message to display.



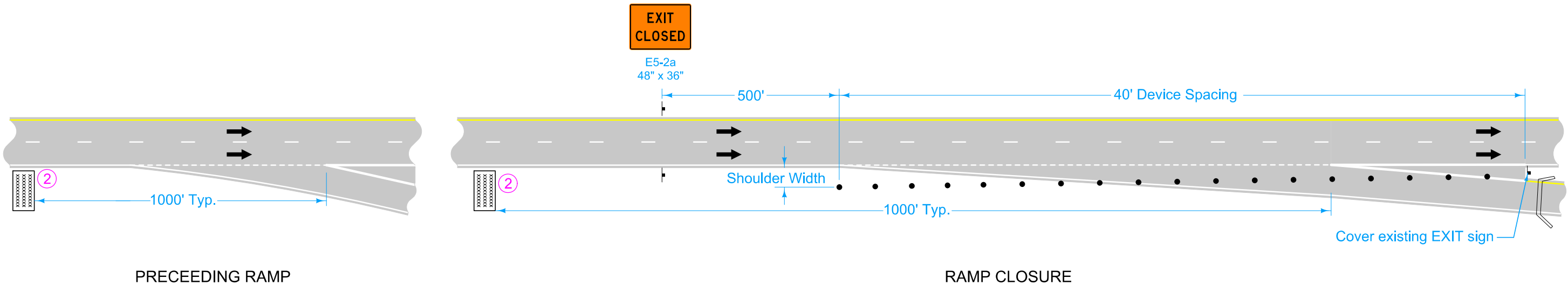
# LEGEND

- Type III Barricade
- Traffic Sign
- Drum
- 42" Channelizer
- Direction of Traffic
- Work Area
- Portable Dynamic Message Sign

 <b>IOWA   DOT</b>  <b>STANDARD ROAD PLAN</b>	REVISION	
	5	04-21-20
	<b>TC-417</b>	
	SHEET 2 of 3	
	REVISIONS:      Added Portable Dynamic Message Signs and new note 2. Retitled standard.	
		
APPROVED BY DESIGN METHODS ENGINEER		



② Place Portable Dynamic Message Sign 3 calendar days prior to ramp closure. Leave in place until ramp is re-opened. The Engineer will determine the message to display.



LEGEND

- Road Closure
- Traffic Sign
- 42" Channelizer
- Direction of Traffic
- Portable Dynamic Message Sign

<b>IOWA DOT</b> <b>STANDARD ROAD PLAN</b>	REVISION	
	5	04-21-20
	<b>TC-417</b> SHEET 3 of 3	
REVISIONS: Added Portable Dynamic Message Signs and new note 2. Retitled standard.		
 APPROVED BY DESIGN METHODS ENGINEER		
<b>EXIT RAMP CLOSURE</b>		