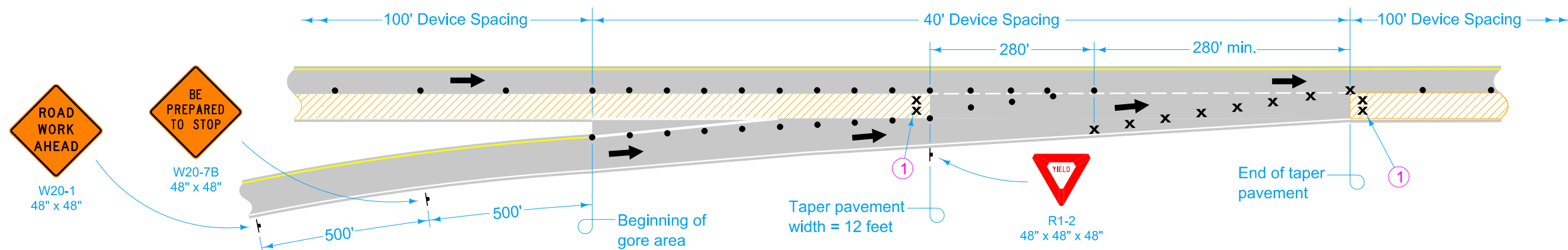
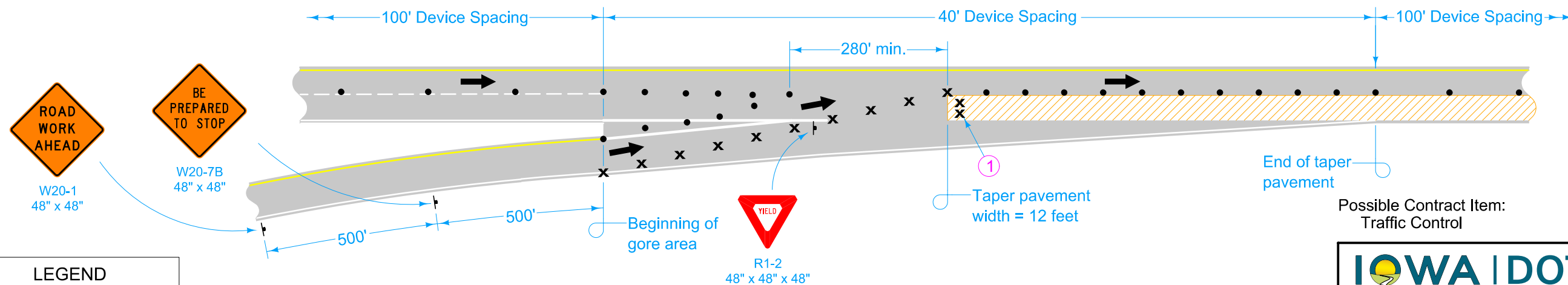


LEFT LANE CLOSURE THROUGH ENTRANCE RAMP



RIGHT LANE CLOSURE THROUGH ENTRANCE RAMP





STAGING THROUGH ENTRANCE RAMP

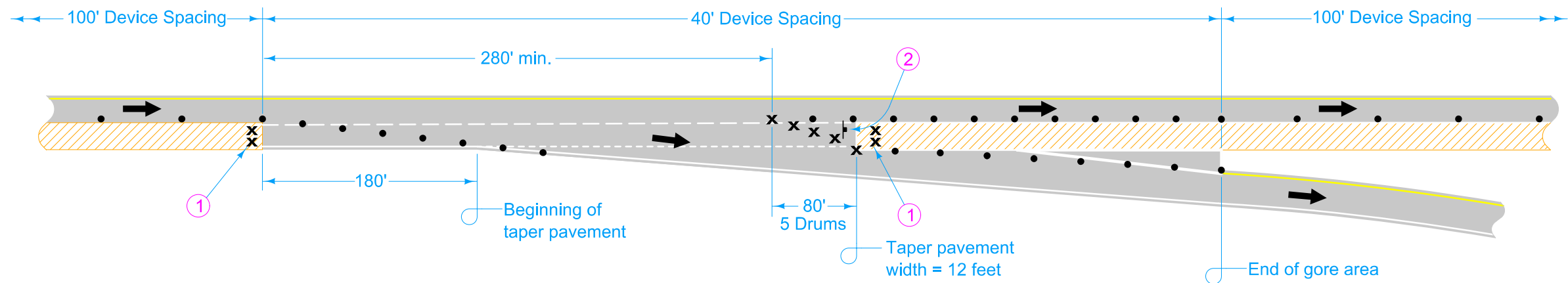
Possible Contract Item:
Traffic Control

LEGEND

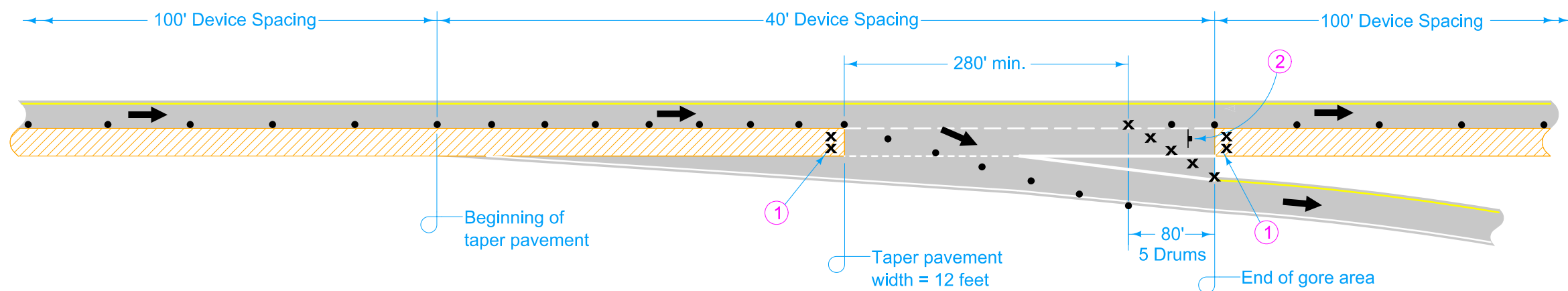
- × Drum
- † Traffic Sign
- 42" Channelizer
- ← Direction of Traffic
- ▨ Work Area

① For lanes closed to traffic, place two drums every 1000 feet. For full depth excavations in a closed lane, place two drums in front of each location. Additional drums need not be placed for full depth excavations spaced closer than 150 feet.

 IOWA DOT	REVISION		
	7	10-16-18	
	TC-420		
STANDARD ROAD PLAN		SHEET 1 of 5	
REVISIONS:		Added drums in work area and modified circle notes. Added Type III Barricade to Legend on Sheet 4.	
			
		APPROVED BY DESIGN METHODS ENGINEER	
LANE CLOSURE AT RAMPS			



RIGHT LANE CLOSURE THROUGH EXIT RAMP





STAGING THROUGH EXIT RAMP

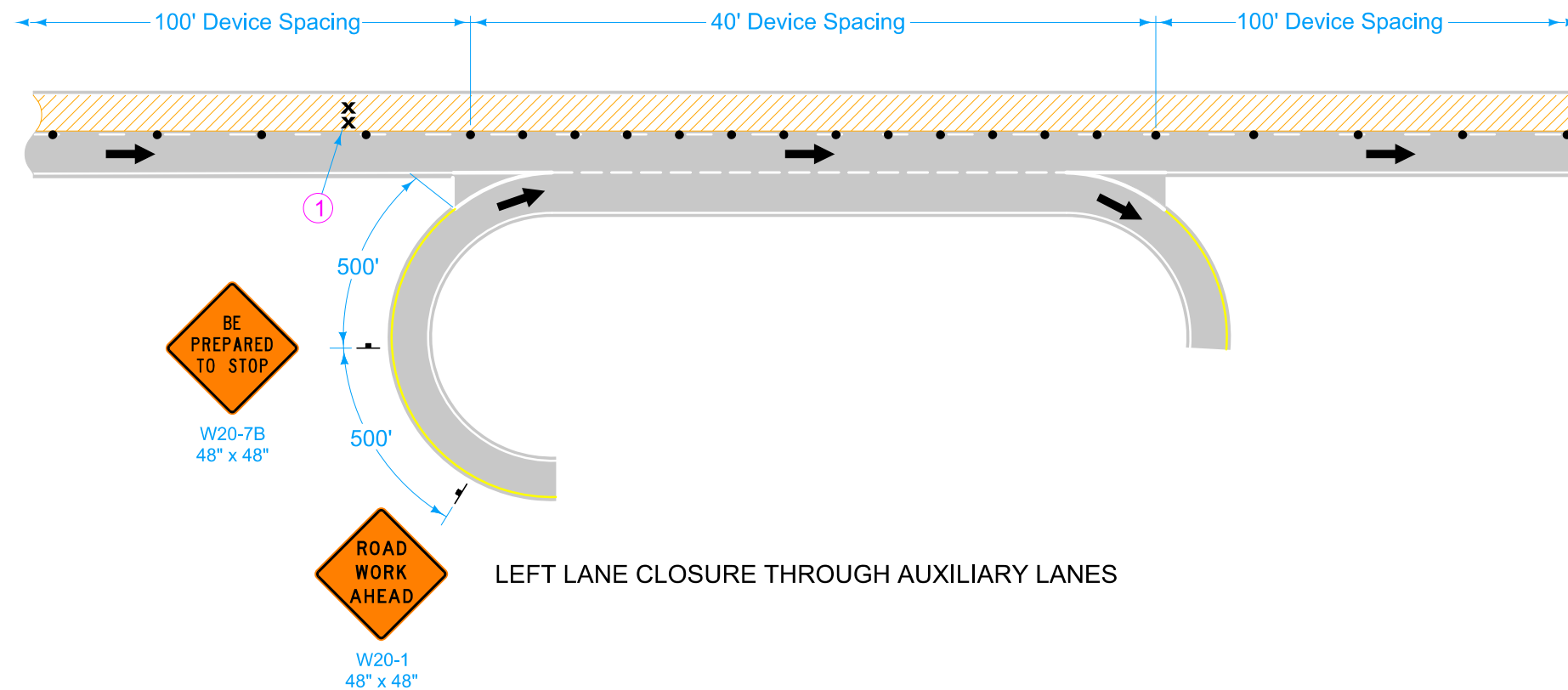
LEGEND

- × Drum
- † Traffic Sign
- 42" Channelizer
- ← Direction of Traffic
- ▨ Work Area

① For lanes closed to traffic, place two drums every 1000 feet. For full depth excavations in a closed lane, place two drums in front of each location. Additional drums need not be placed for full depth excavations spaced closer than 150 feet.

② Temporary EXIT sign, mounted so that bottom of sign is a minimum of 3 feet above pavement surface. If in place for more than one day, mount an Exit Number Panel with the proper exit number above the temporary EXIT sign. See SI-881 for details.



 IOWA DOT	REVISION	
	7	10-16-18
	TC-420	
STANDARD ROAD PLAN		SHEET 2 of 5
REVISIONS:	Added drums in work area and modified circle notes. Added Type III Barricade to Legend on Sheet 4.	
		
APPROVED BY DESIGN METHODS ENGINEER		
LANE CLOSURE AT RAMPS		

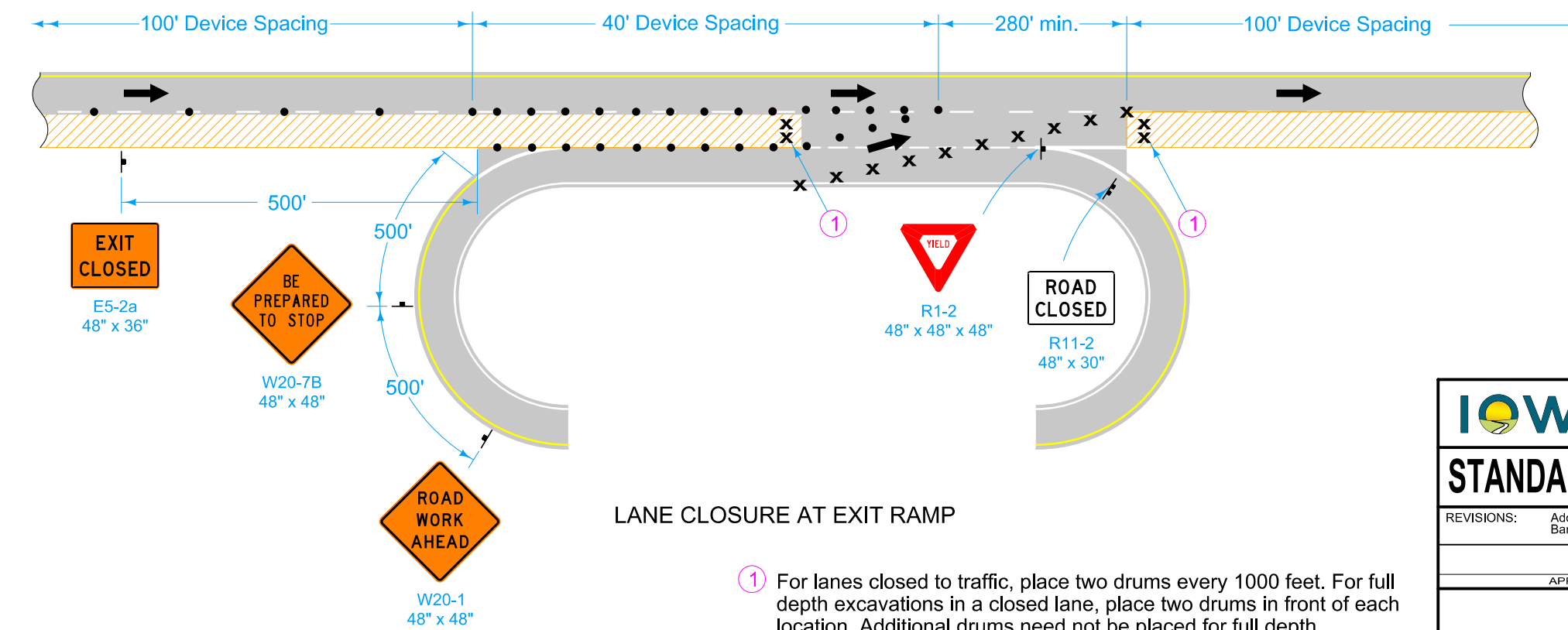
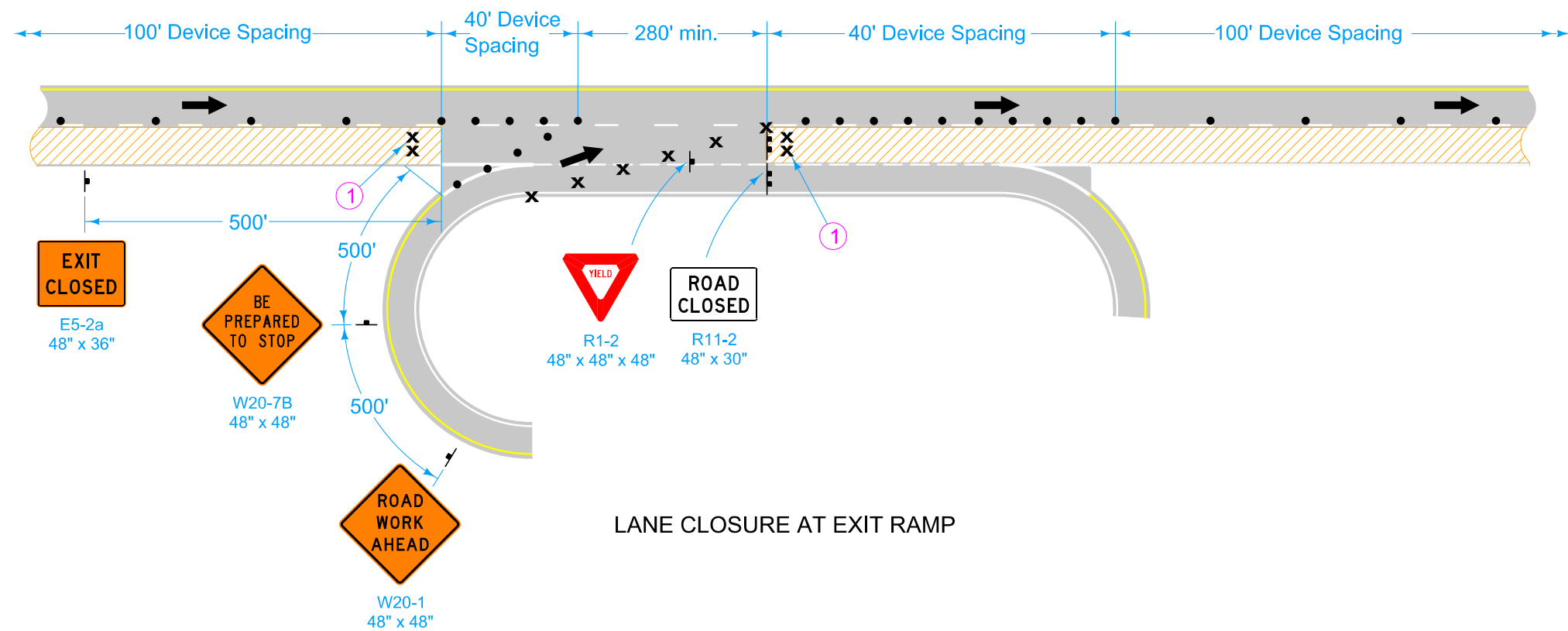


LEFT LANE CLOSURE THROUGH AUXILIARY LANES

LEGEND	
x	Drum
⌋	Traffic Sign
•	42" Channelizer
←	Direction of Traffic
	Work Area

① For lanes closed to traffic, place two drums every 1000 feet. For full depth excavations in a closed lane, place two drums in front of each location. Additional drums need not be placed for full depth excavations spaced closer than 150 feet.

 IOWA DOT	REVISION	
	7	10-16-18
	TC-420	
STANDARD ROAD PLAN		SHEET 3 of 5
REVISIONS:	Added drums in work area and modified circle notes. Added Type III Barricade to Legend on Sheet 4.	
		
APPROVED BY DESIGN METHODS ENGINEER		
LANE CLOSURE AT RAMPS		

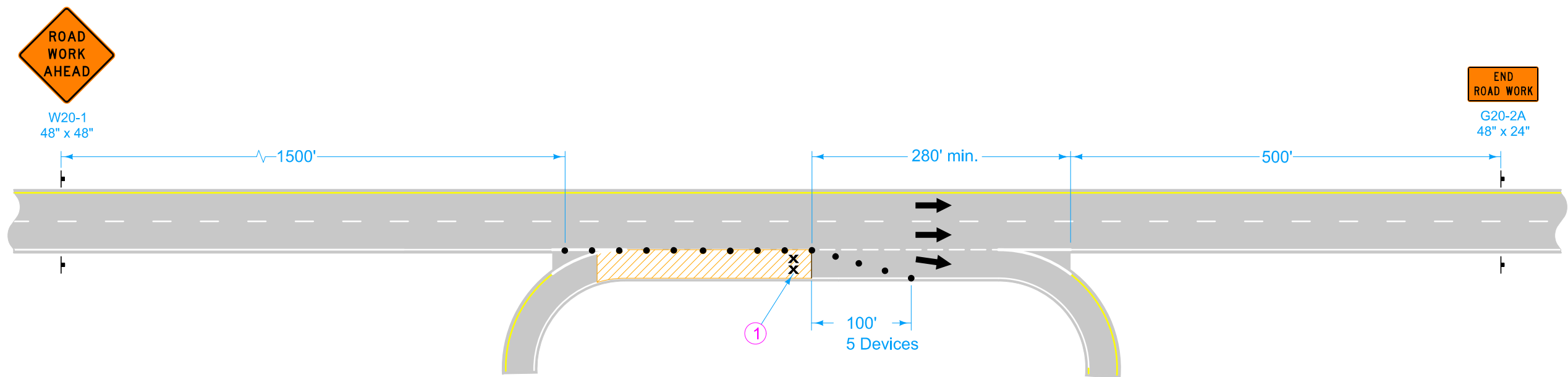


LEGEND

- Type III Barricade
- Drum
- Traffic Sign
- 42" Channelizer
- Direction of Traffic
- Work Area

① For lanes closed to traffic, place two drums every 1000 feet. For full depth excavations in a closed lane, place two drums in front of each location. Additional drums need not be placed for full depth excavations spaced closer than 150 feet.

IOWA DOT STANDARD ROAD PLAN	REVISION	
	7	10-16-18
	TC-420 SHEET 4 of 5	
REVISIONS: Added drums in work area and modified circle notes. Added Type III Barricade to Legend on Sheet 4.		
APPROVED BY DESIGN METHODS ENGINEER		
LANE CLOSURE AT RAMPS		



LANE CLOSURE AT EXIT RAMP

LEGEND	
x	Drum
⌋	Traffic Sign
•	42" Channelizer
←	Direction of Traffic
▨	Work Area

① For lanes closed to traffic, place two drums every 1000 feet. For full depth excavations in a closed lane, place two drums in front of each location. Additional drums need not be placed for full depth excavations spaced closer than 150 feet.

IOWA DOT STANDARD ROAD PLAN	REVISION	
	7	10-16-18
TC-420		
SHEET 5 of 5		
REVISIONS: Added drums in work area and modified circle notes. Added Type III Barricade to Legend on Sheet 4.		
APPROVED BY DESIGN METHODS ENGINEER		
LANE CLOSURE AT RAMPS		