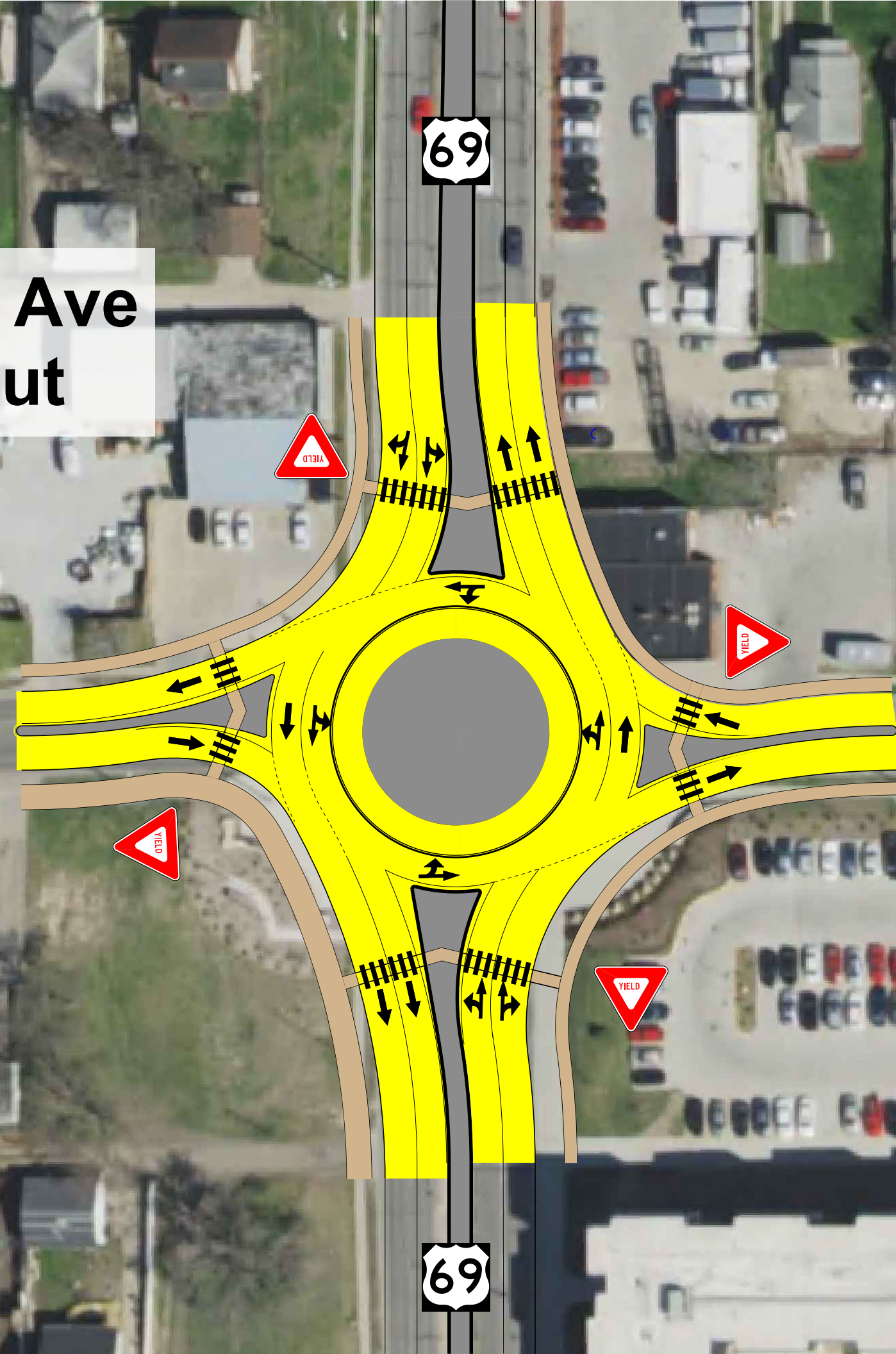


US 69 & Hull Ave Roundabout



Hull Ave

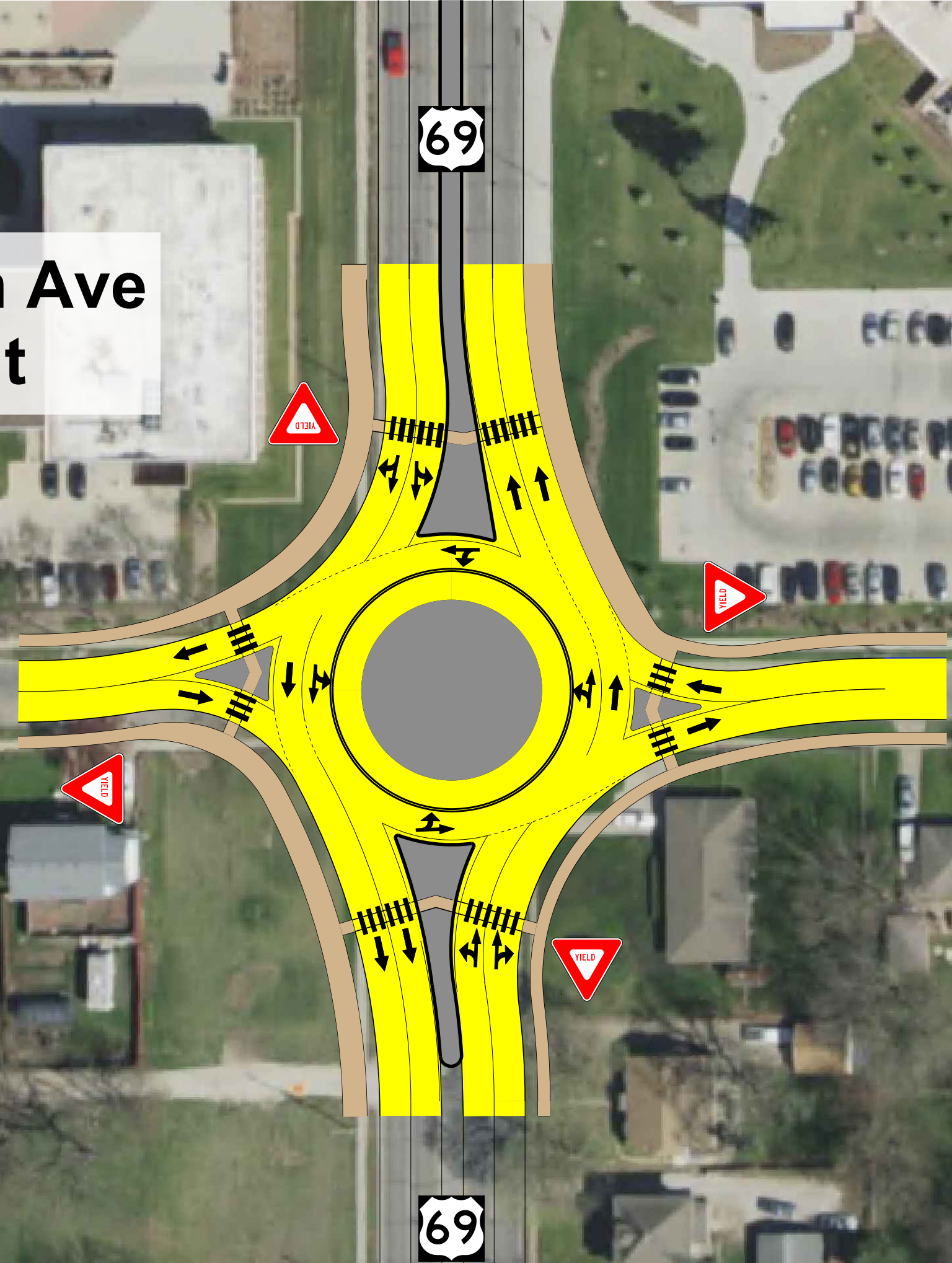
Hull Ave

69

69



US 69 & Morton Ave Roundabout



Morton Ave

Morton Ave

69

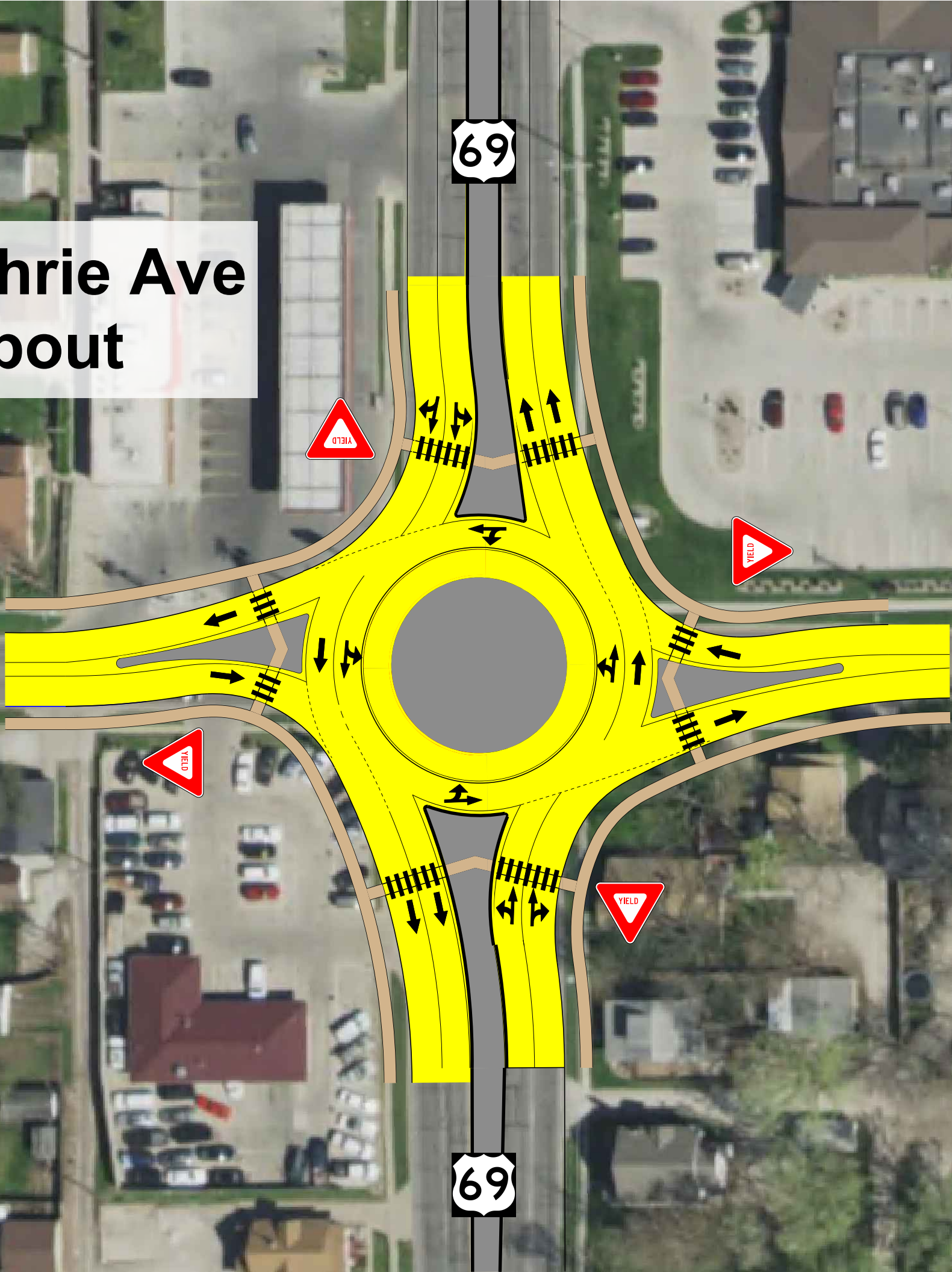
69



US 69 & Guthrie Ave Roundabout

Guthrie Ave

Guthrie Ave

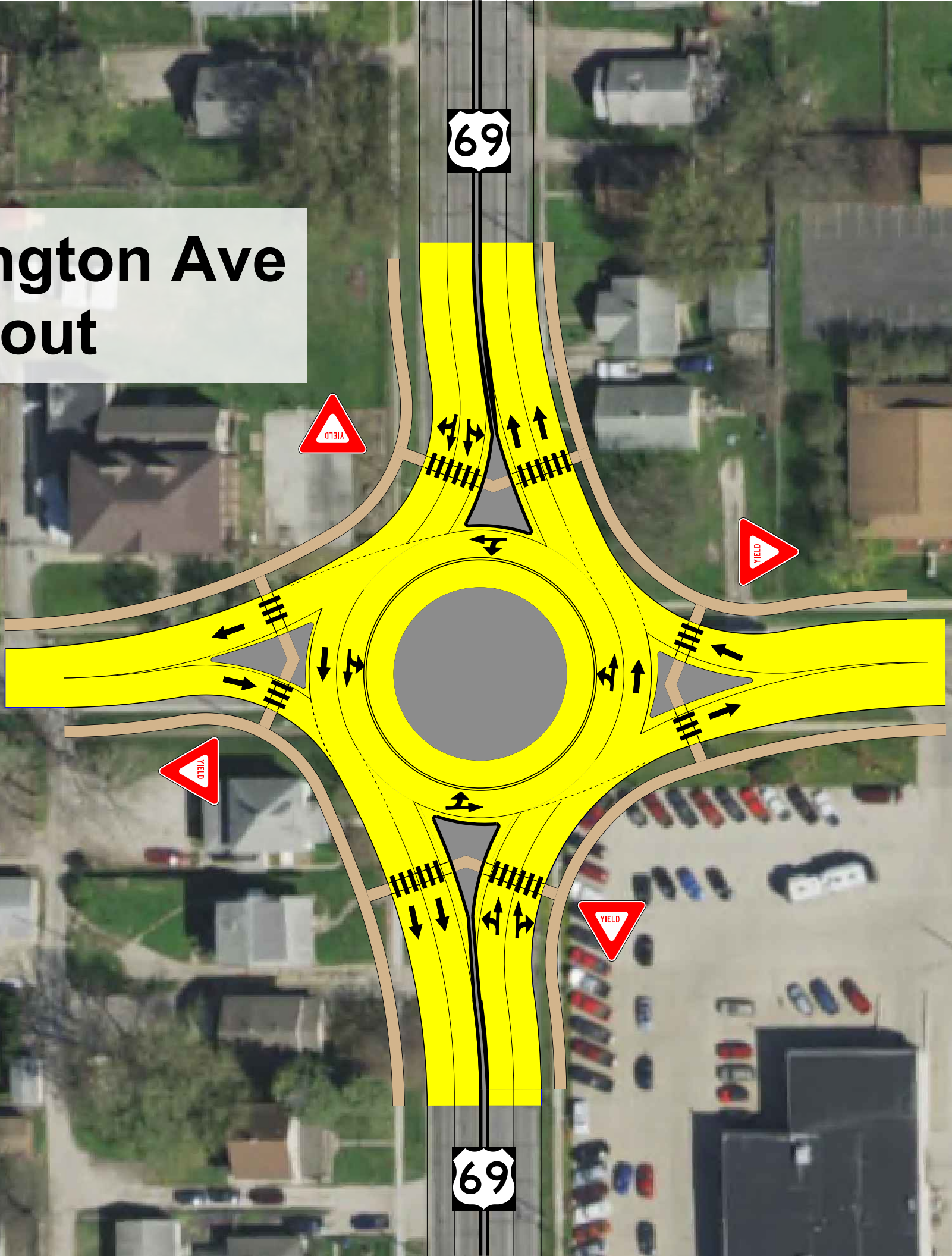




US 69 & Washington Ave Roundabout

Washington Ave

Washington Ave

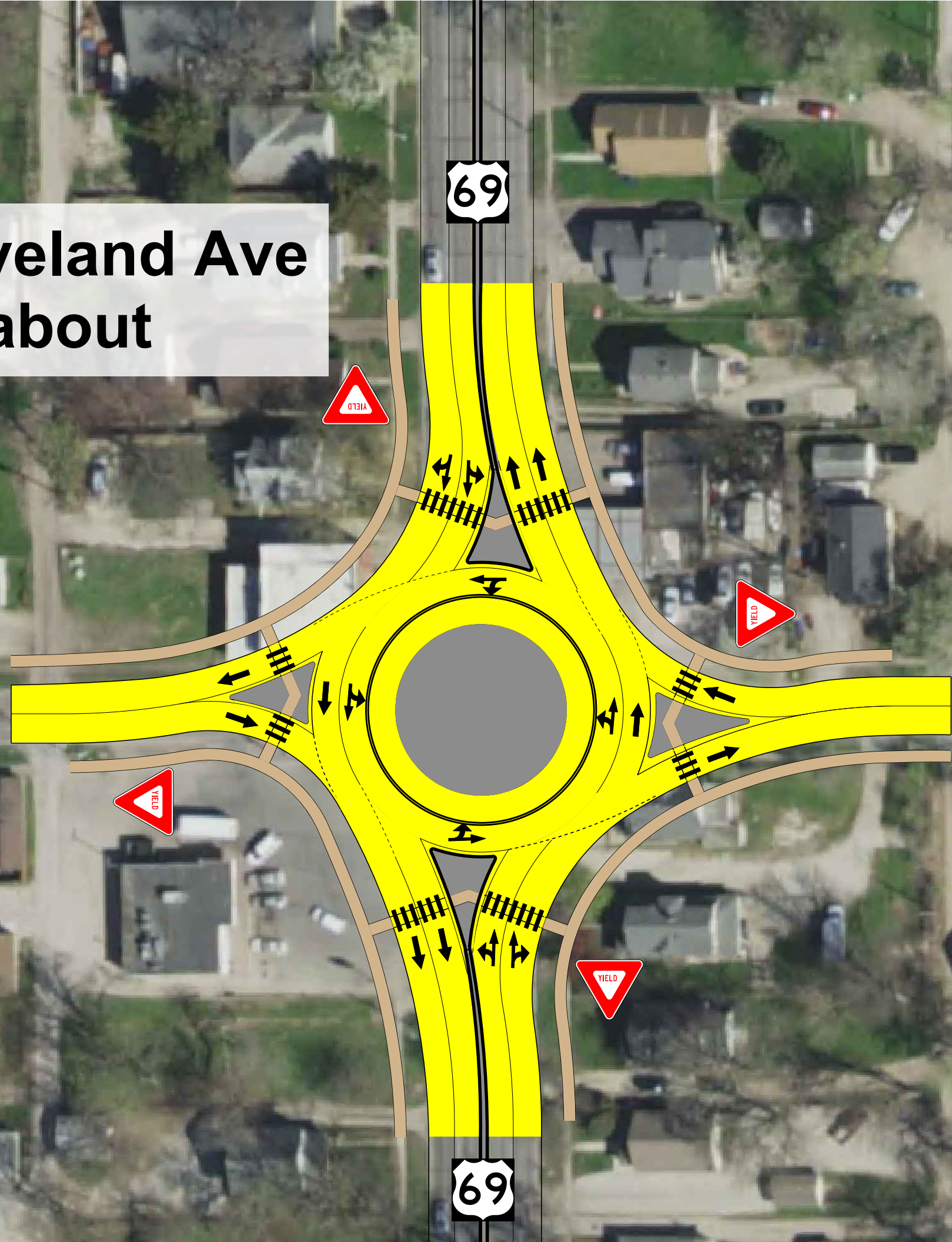


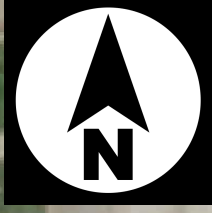


US 69 & Cleveland Ave Roundabout

Cleveland Ave

Cleveland Ave





US 69 & Maury St Option A

Maury St

Maury St

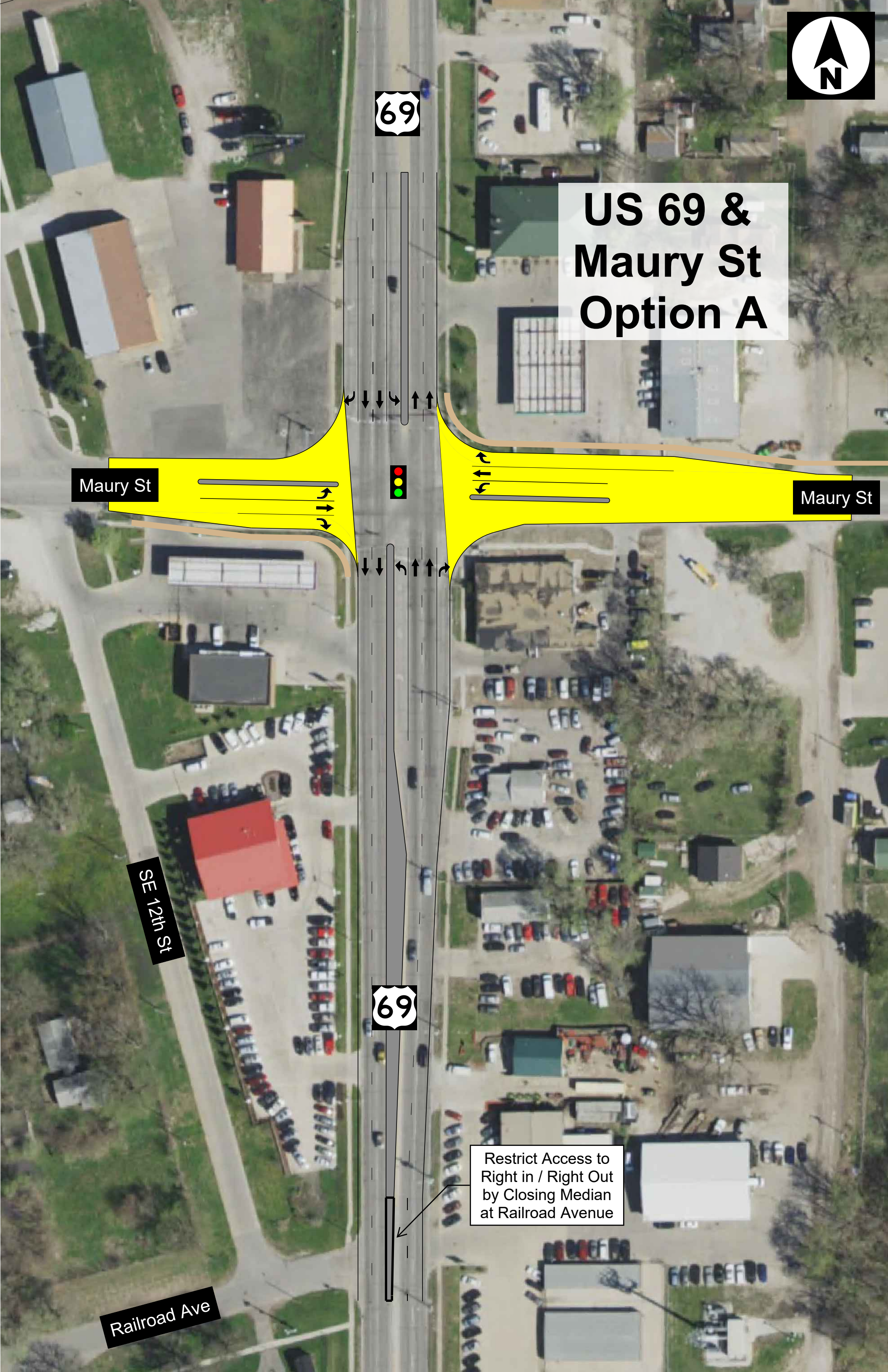


SE 12th St



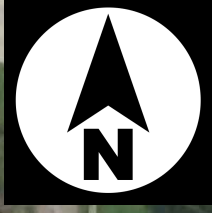
Restrict Access to
Right in / Right Out
by Closing Median
at Railroad Avenue

Railroad Ave

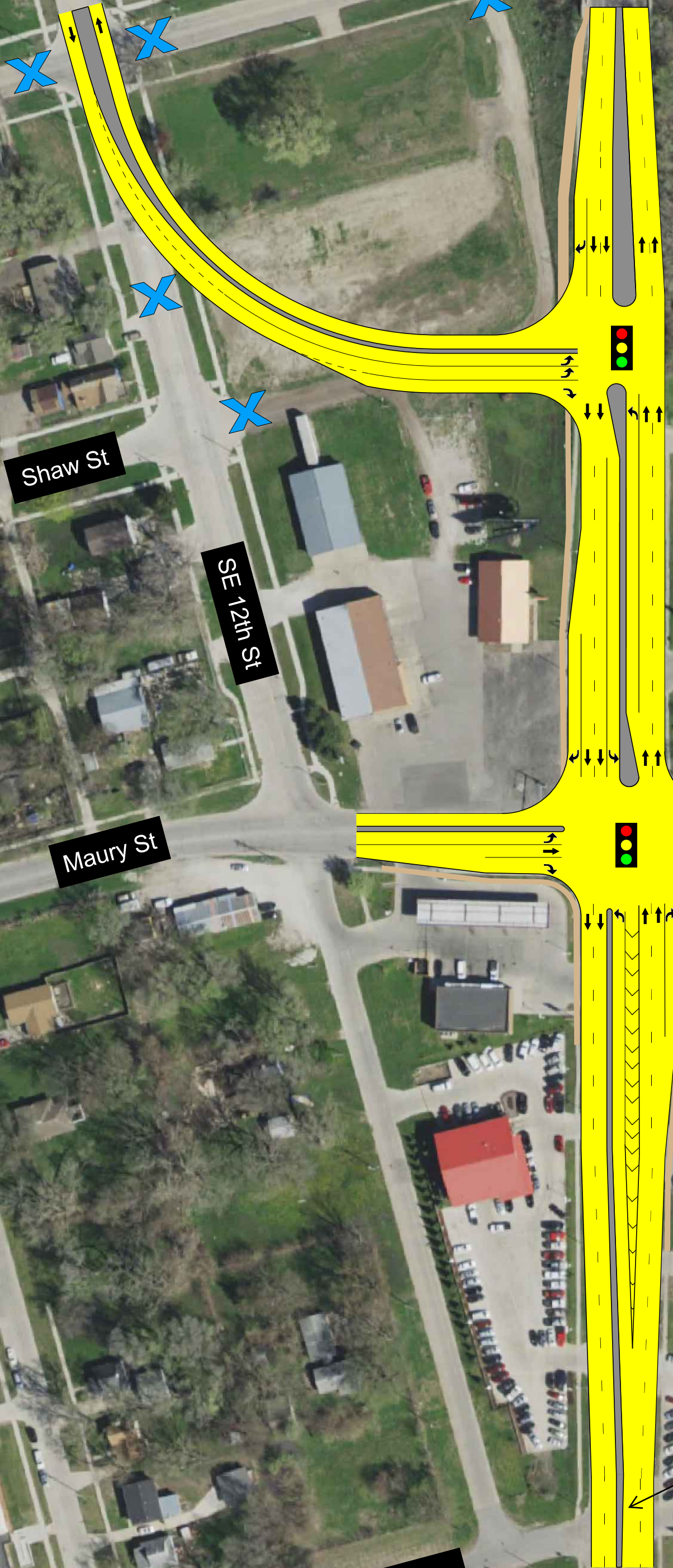


LEGEND

X Road / Access Closure



**US 69 & Maury St
Option B**



Restrict Access to Right in / Right Out by Closing Median at Railroad Avenue

Shaw St

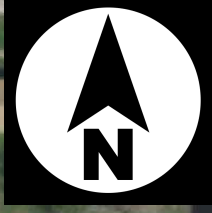
SE 12th St

Maury St

Maury St

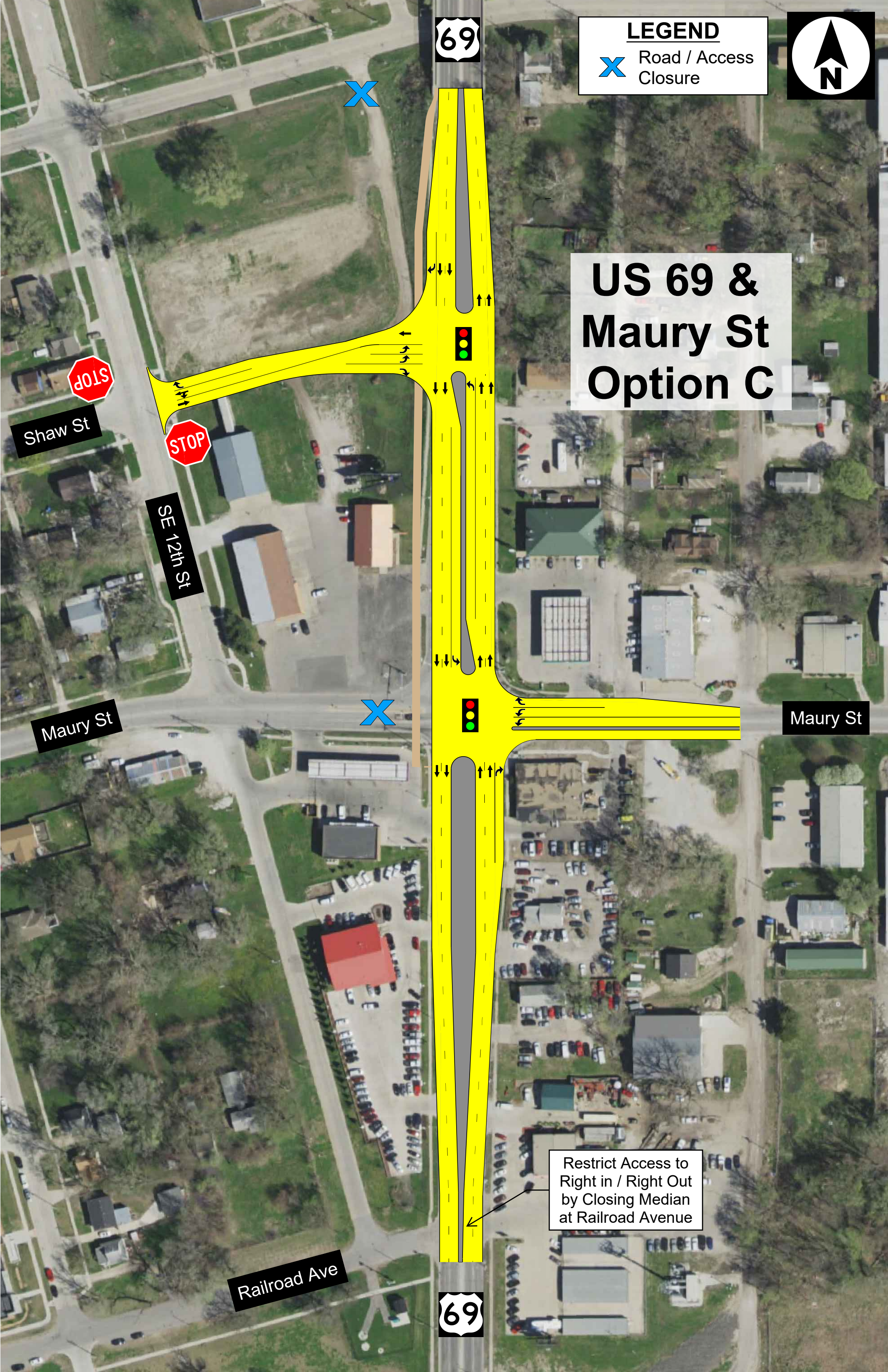
Railroad Ave





LEGEND
X Road / Access Closure

US 69 & Maury St Option C



Restrict Access to Right in / Right Out by Closing Median at Railroad Avenue

Shaw St

SE 12th St

Maury St

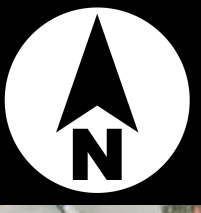
Maury St

Railroad Ave



LEGEND

X Road / Access Closure



**US 69 & Maury St
Option D**



MLK Pkwy

Shaw St

SE 12th St

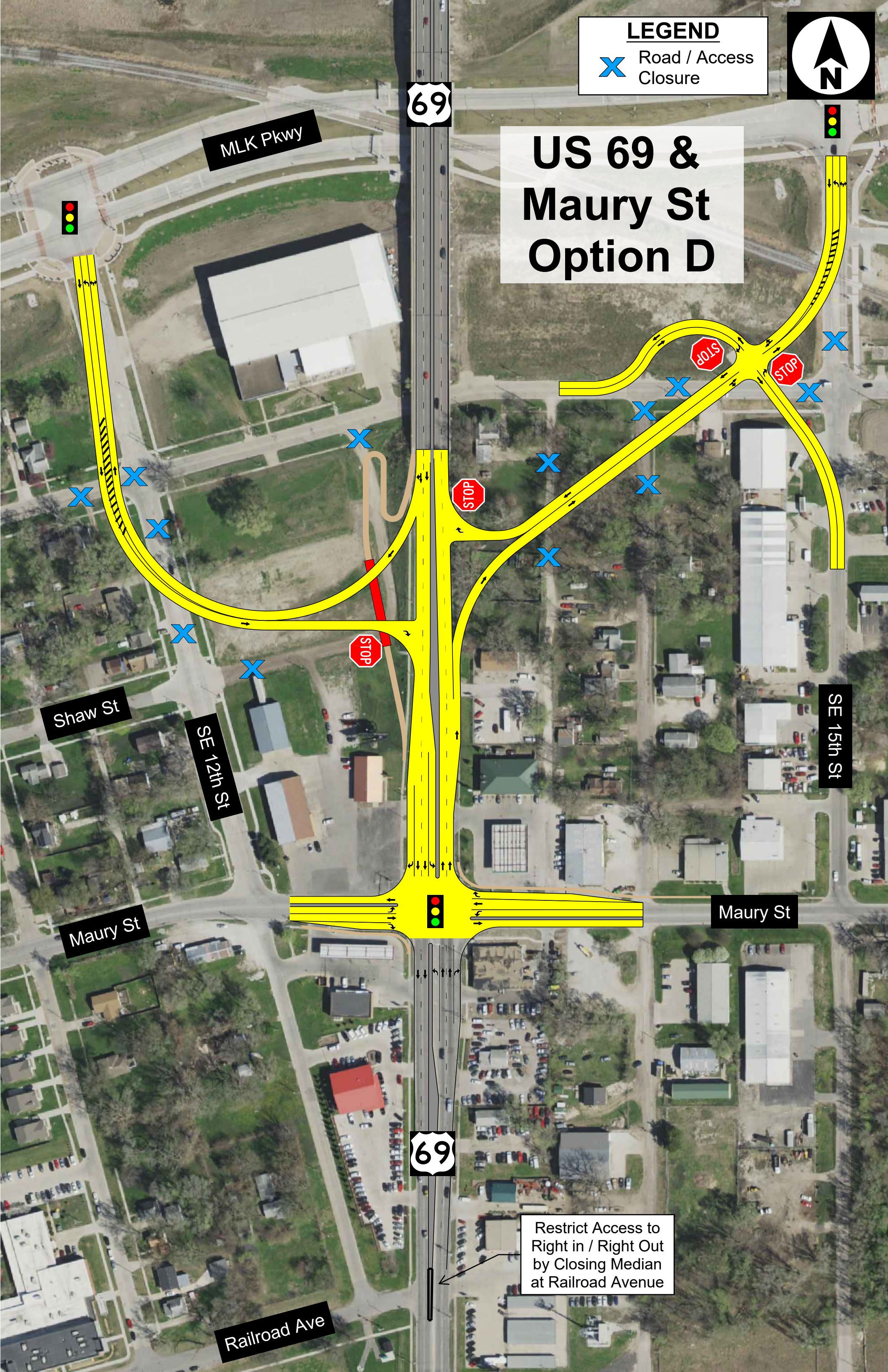
Maury St

SE 15th St


Maury St

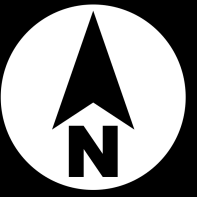
Railroad Ave

Restrict Access to Right in / Right Out by Closing Median at Railroad Avenue



LEGEND

 Road / Access Closure



US 69 & Park Ave Displaced Left Turn

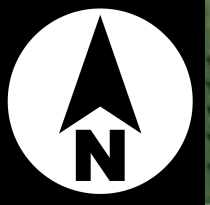


Park Ave

Park Ave

Indianola Ave

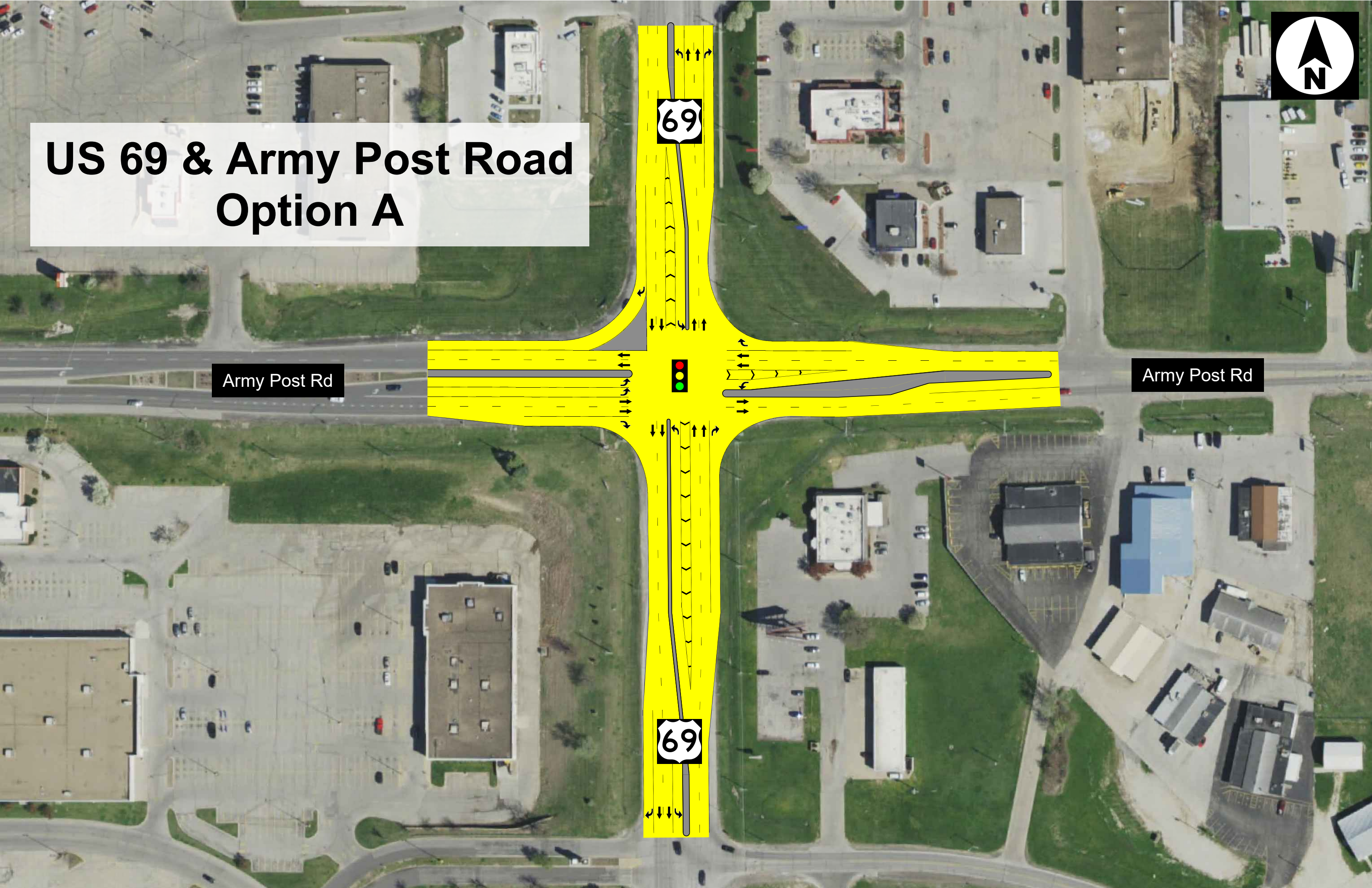




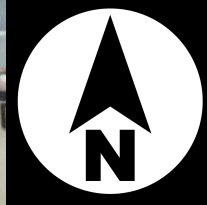
US 69 & Army Post Road Option A

Army Post Rd

Army Post Rd



LEGEND
X Road / Access Closure




US 69 & Army Post Road Option B

Army Post Rd

Army Post Rd



LEGEND

 Road / Access Closure



**US 69 & Army Post Road
Option C**

Army Post Rd

Army Post Rd

Access to Southridge Mall would be shifted to the signaled intersection to the south.

