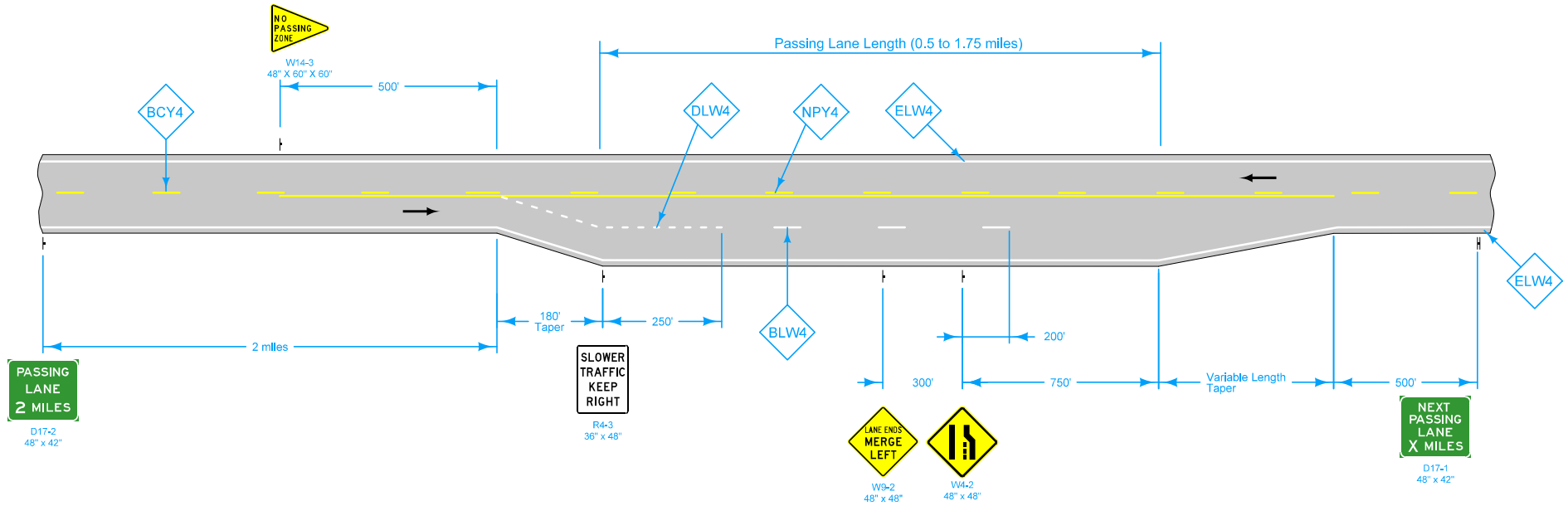


See [PM-110](#) for line information.

See [PM-111](#) for symbol and legend information.



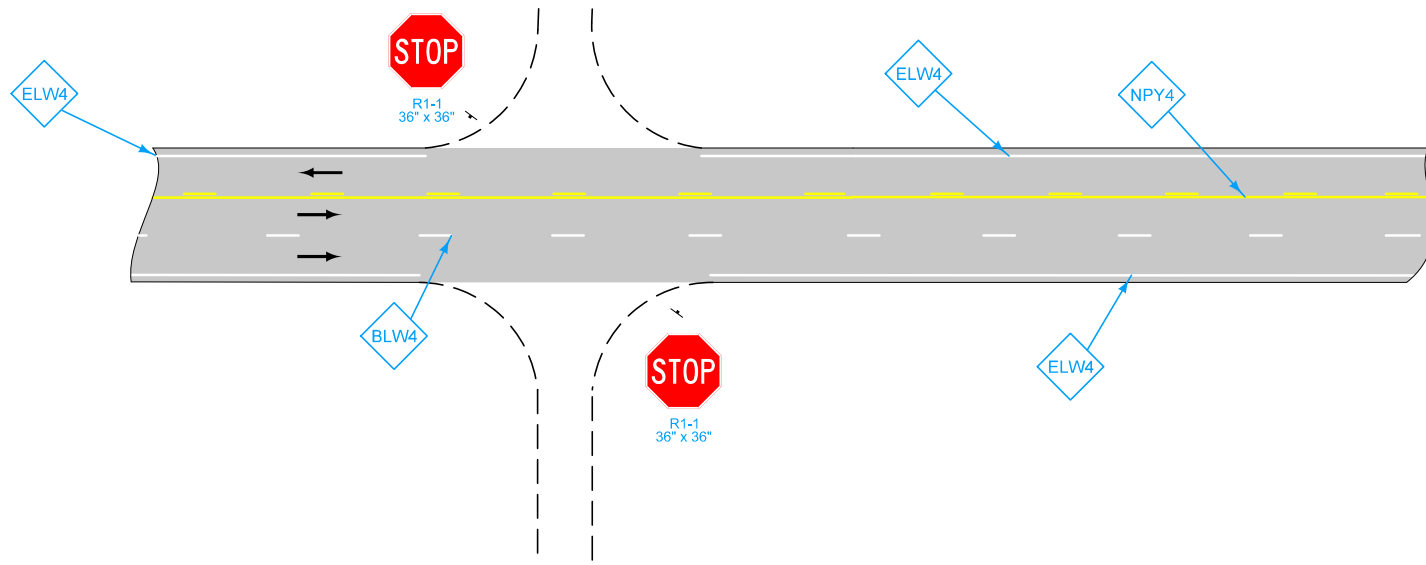
PASSING LANE

Possible Contract Items:
 Pavement Marking Line Items
 Pavement Marking Symbol and Legend Items
 Type 'A' Signs

Possible Tabulations:
[108-22](#)
[108-29](#)

LEGEND	
← Direction of Traffic	ELW4 Edge Line Right (White)
BCY4 Broken Centerline (Yellow)	DLW4 Dotted Line (White)
BLW4 Broken Lane Line (White)	NPY4 No Passing Zone Line (Yellow)

	REVISION
	New 10-15-19
STANDARD ROAD PLAN	PM-222
REVISIONS: New.	SHEET 1 of 4
 APPROVED BY DESIGN METHODS ENGINEER	
PASSING LANE (SUPER TWO HIGHWAY)	



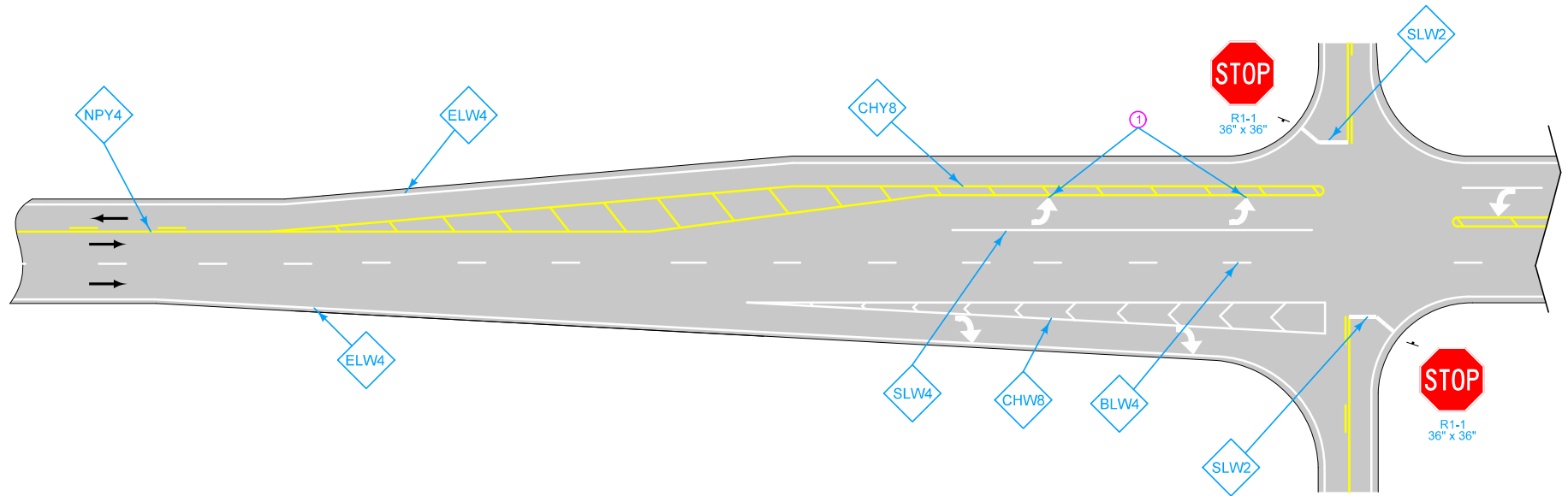
UNPAVED INTERSECTION

LEGEND

- ← Direction of Traffic
- BCY4 Broken Centerline (Yellow)
- BLW4 Broken Lane Line (White)
- ELW4 Edge Line Right (White)
- DLW4 Dotted Line (White)
- NPY4 No Passing Zone Line (Yellow)

	REVISION
	New 10-15-19
STANDARD ROAD PLAN	PM-222
REVISIONS: New.	SHEET 2 of 4
APPROVED BY DESIGN METHODS ENGINEER	
PASSING LANE (SUPER TWO HIGHWAY)	

① Symbol and Legend (when listed in 108-29)



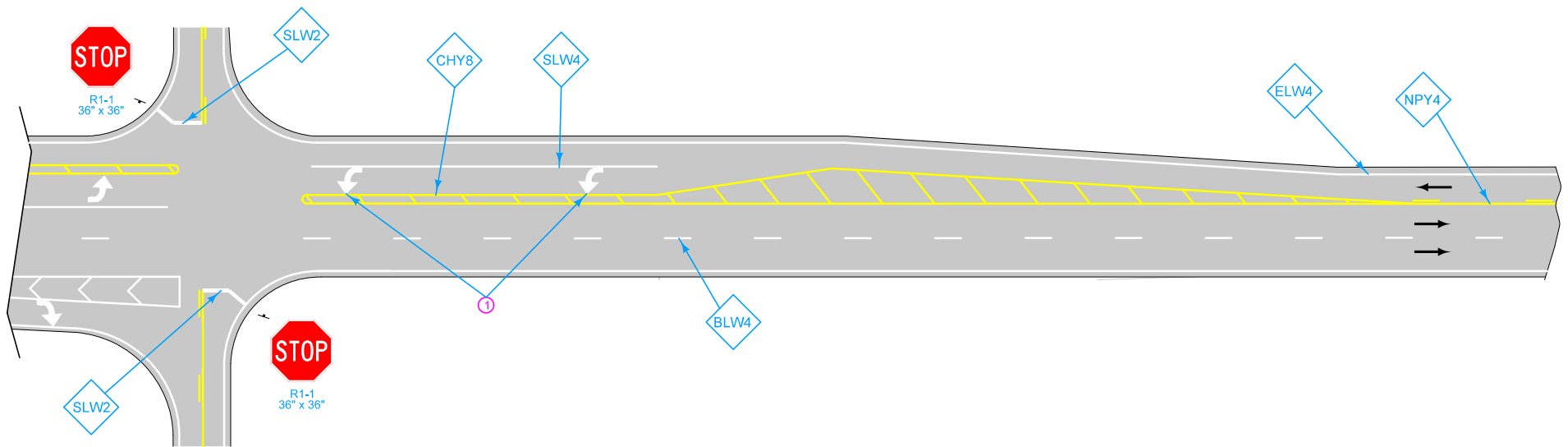
PAVED INTERSECTION

LEGEND

- ← Direction of Traffic
- BCY4 Broken Centerline (Yellow)
- BLW4 Broken Lane Line (White)
- CHW8 Channelizing Line (White)
- SLW4 Solid Lane Line (White)
- ELW4 Edge Line Right (White)
- DLW4 Dotted Line (White)
- NPY4 No Passing Zone Line (Yellow)
- CHY8 Channelizing Line (Yellow)
- SLW2 Stop Line (White)

	REVISION
	New 10-15-19
STANDARD ROAD PLAN	PM-222
REVISIONS: New.	SHEET 3 of 4
APPROVED BY DESIGN METHODS ENGINEER	
PASSING LANE (SUPER TWO HIGHWAY)	

① Symbol and Legend (when listed in 108-29)



PAVED INTERSECTION

LEGEND	
←	Direction of Traffic
BCY4	Broken Centerline (Yellow)
BLW4	Broken Lane Line (White)
CHW8	Channelizing Line (White)
SLW4	Solid Lane Line (White)
ELW4	Edge Line Right (White)
DLW4	Dotted Line (White)
NPY4	No Passing Zone Line (Yellow)
CHY8	Channelizing Line (Yellow)
SLW2	Stop Line (White)

	REVISION
	New 10-15-19
STANDARD ROAD PLAN	PM-222
REVISIONS: New.	SHEET 4 of 4
 <small>APPROVED BY DESIGN METHODS ENGINEER</small>	
PASSING LANE (SUPER TWO HIGHWAY)	