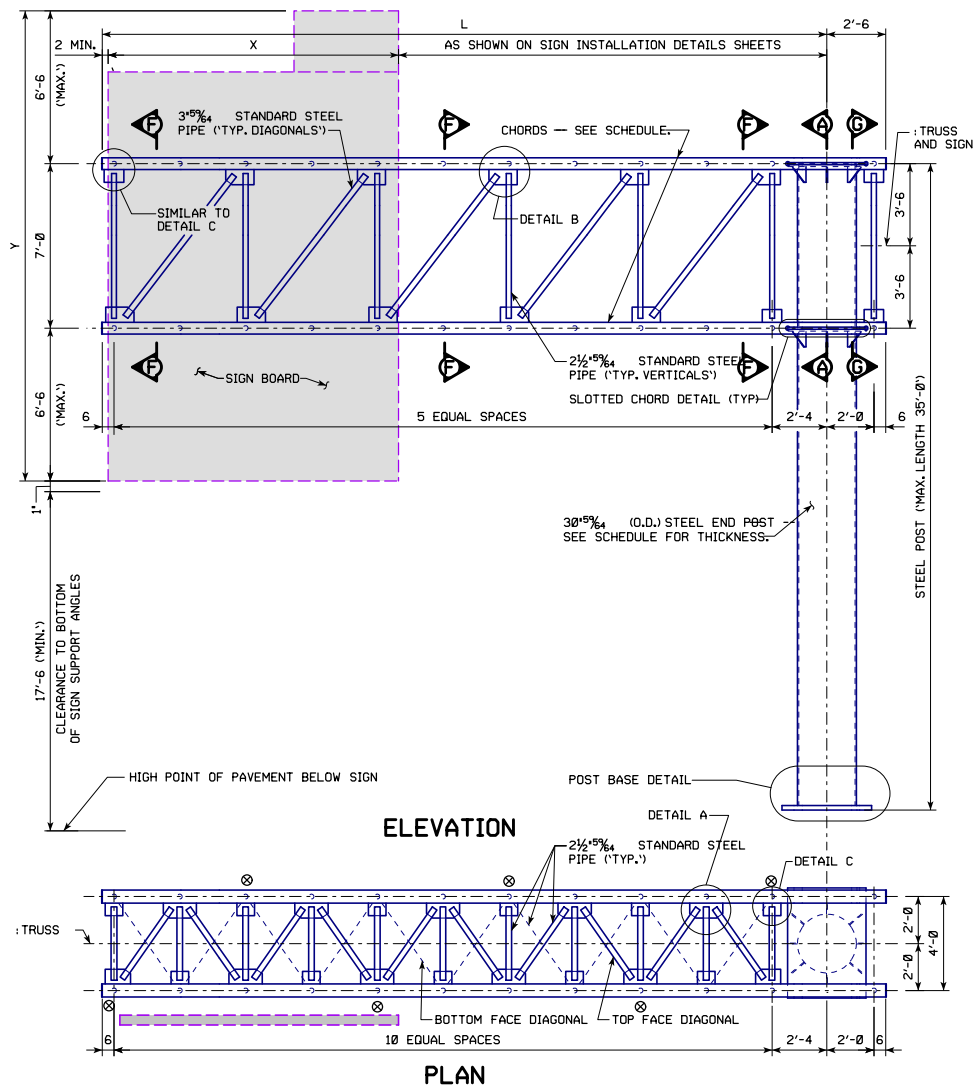


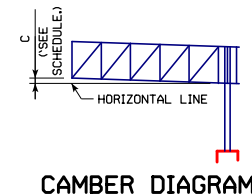
3/6/REVISED 03-2018: UPDATED BRIDGE ENGINEER SIGNATURE.  
 3/6/REVISED 03-2019: MODIFIED CHORD SCHEDULE TO ADDRESS MATERIAL AVAILABILITY ISSUES. REPLACED NOTE IDENTIFIER ASTRISKS WITH ENCRICLED NUMBERS TO IMPROVE READABILITY.  
 3/6/REVISED 04-2020: CLARIFIED THAT 17'-6" MINIMUM CLEARANCE IS FROM HIGH POINT OF PAVEMENT BELOW SIGN TO BOTTOM OF SIGN SUPPORT ANGLES.  
 3/6/STEELCANTILEVERSIGNTRUSS.dgn - SCST-02-17 - THIS SHEET ISSUED 07-2017.



⊗ INDICATES THE CONNECTION OF INTERIOR DIAGONALS IN VERTICAL PLANE TO THE TOP CHORD MEMBERS. SEE SECTION F-F.

| TRUSS LENGTH<br>MAX. L | MAX. SIGN<br>HEIGHT<br>Y | MAX. SIGN<br>AREA X*Y<br>FT <sup>2</sup> /64 | CHORDS              | POST<br>WALL<br>THICKNESS | CAMBER<br>C |
|------------------------|--------------------------|--|---------------------|---------------------------|-------------|
| 40'-0" ①               | 20'-0"                   | 400  | HSS 6.625 x 0.500   | 0.625"                    | 4"          |
| 38'-0"                 | 20'-0"                   | 400  | HSS 6.625 x 0.432   | 0.625"                    | 3 1/2"      |
| 36'-0"                 | 20'-0"                   | 400  | HSS 6.625 x 0.432   | 0.625"                    | 3"          |
| 34'-0"                 | 20'-0"                   | 400  | HSS 6.625 x 0.375 ② | 0.625"                    | 2 1/2"      |
| 32'-0"                 | 20'-0"                   | 400  | HSS 6.625 x 0.375 ② | 0.625"                    | 2 1/2"      |
| 30'-0"                 | 20'-0"                   | 400  | HSS 6.625 x 0.375 ② | 0.625"                    | 2"          |

- ALTHOUGH THESE STANDARDS ALLOW FOR A TRUSS MAXIMUM CANTILEVER LENGTH OF 40'-0", THE DESIGNER SHOULD CHECK MATERIAL AVAILABILITY BEFORE SELECTING A TRUSS LENGTH GREATER THAN 39'-6". HSS 6.625 CHORDS ARE TYPICALLY STOCKED IN 42'-0" LENGTHS. A TRUSS LENGTH OF 40'-0" REQUIRES A TOTAL CHORD LENGTH OF 42'-6".
- HSS 6.625 x 0.432 MAY BE SUBSTITUTED FOR HSS 6.625 x 0.375 FOR TRUSS LENGTHS FROM 30'-0" TO 36'-0".



SEE STANDARD SHEET SCST-04-17 FOR SECTION A-A.

SEE STANDARD SHEET SCST-05-17 FOR DETAILS A, B AND C; SECTIONS F-F AND G-G; AND SLOTTED CHORD DETAIL.

SEE STANDARD SHEET SCST-06-17 FOR POST BASE DETAIL.

|                                    |   |                                  |  |
|------------------------------------|---|----------------------------------|--|
| 04-2020<br>LATEST REVISION DATE    | <i>[Signature]</i><br>APPROVED BY BRIDGE ENGINEER | <b>IOWA DOT</b> Highway Division |  |
|                                    |   | STANDARD DESIGN                  |  |
| <b>STEEL CANTILEVER SIGN TRUSS</b> |   |                                  |  |
| JULY, 2017                         |   |                                  |  |
| SIGN SUPPORT VIEWS                 |   | SCST-02-17                       |  |