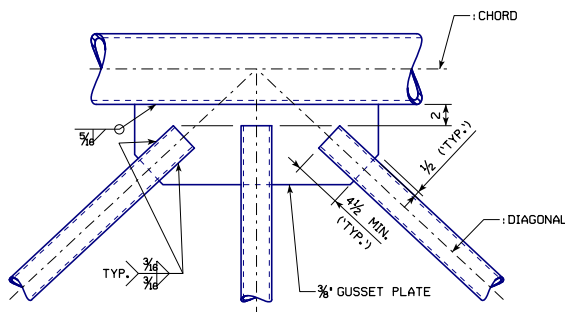
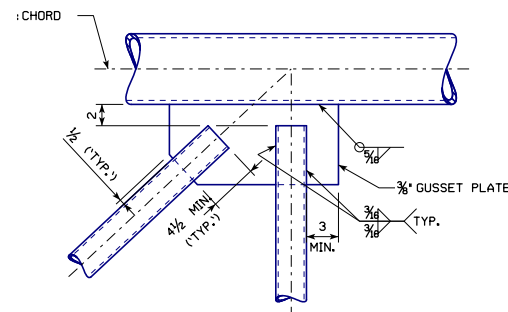


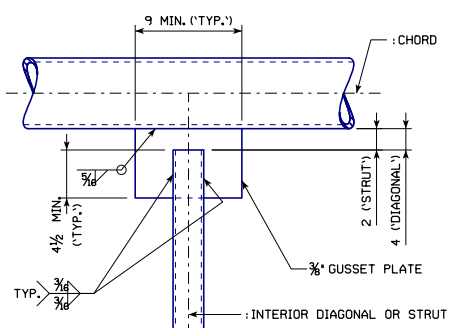
REVISED 03-2018; UPDATED BRIDGE ENGINEER SIGNATURE.  
 REVISED 03-2018; MODIFIED FORMATTING OF CALLOUTS TO IMPROVE CLARITY.  
 REVISED 04-2020; LENGTHENED DIMENSIONAL EXTENSION LINE IN SLOTTED-PIPE-ENDS DETAIL TO CLARIFY THAT DIMENSIONAL EXTENSION LINE IS TANGENT TO CIRCULAR HOLE.  
 SET SCREWS IN END CAP DETAIL, LENGTHENED DIMENSIONAL EXTENSION LINE IN SLOTTED-PIPE-ENDS DETAIL TO CLARIFY THAT DIMENSIONAL EXTENSION LINE IS TANGENT TO CIRCULAR HOLE.  
 TEL:CA@IOWADOT.IA.GOV; SUST-05-17 - THIS SHEET ISSUED 07-2017.



DETAIL A

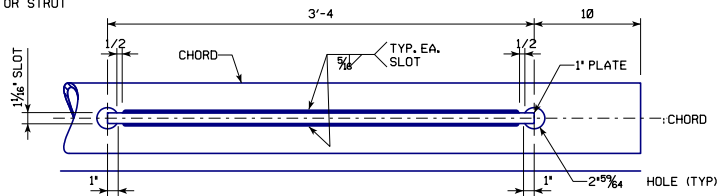


DETAIL B

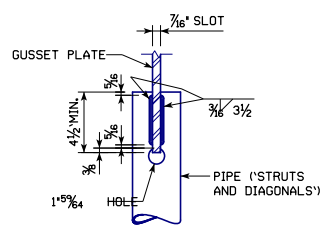


DETAIL C

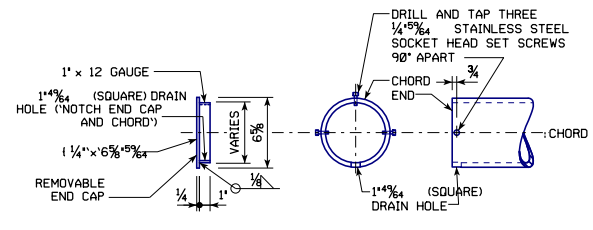
DETAIL A, DETAIL B, AND DETAIL C SHOW CONNECTIONS AT TOP CHORDS. CONNECTIONS AT BOTTOM CHORDS ARE SIMILAR.



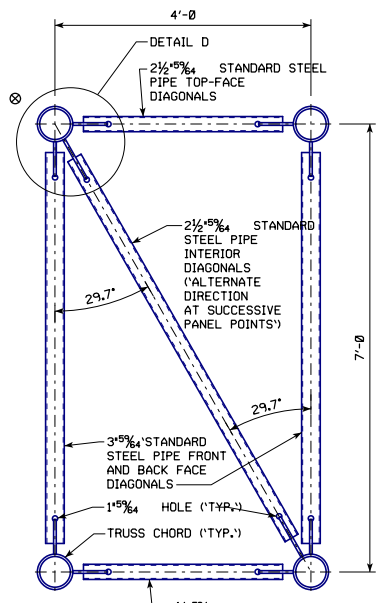
SLOTTED CHORD DETAIL  
TYPICAL AT CHORD-TO-1" PLATE CONNECTIONS



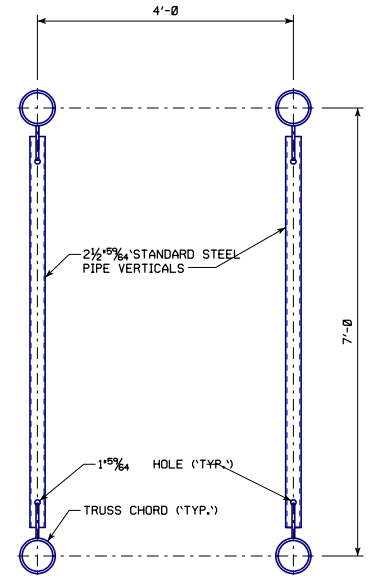
SLOTTED PIPE ENDS  
TYPICAL FOR STRUTS AND DIAGONALS



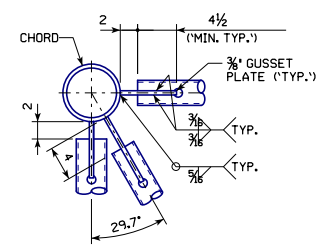
END CAP DETAIL  
TYPICAL FOR ENDS OF CHORDS



SECTION F-F



SECTION G-G



DETAIL D

SEE STANDARD SHEET SCST-02-17 FOR LOCATIONS OF DETAILS A, B AND C AND SECTIONS F-F AND G-G.

⊗ INDICATES THE CONNECTION OF INTERIOR DIAGONALS IN VERTICAL PLANE TO THE TOP CHORD MEMBERS. SEE SECTION F-F.

LATEST REVISION DATE 04-2020 APPROVED BY BRIDGE ENGINEER 		
	STANDARD DESIGN <b>STEEL CANTILEVER SIGN TRUSS</b> JULY, 2017	
	GUSSET PLATE CONNECTION DETAILS	<b>SCST-05-17</b>