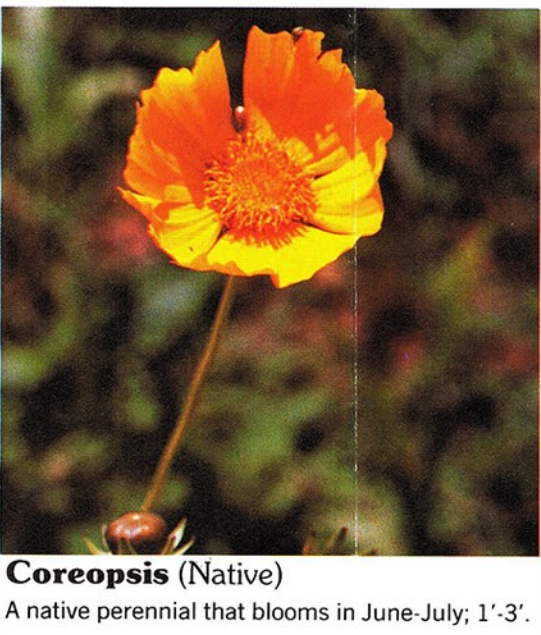
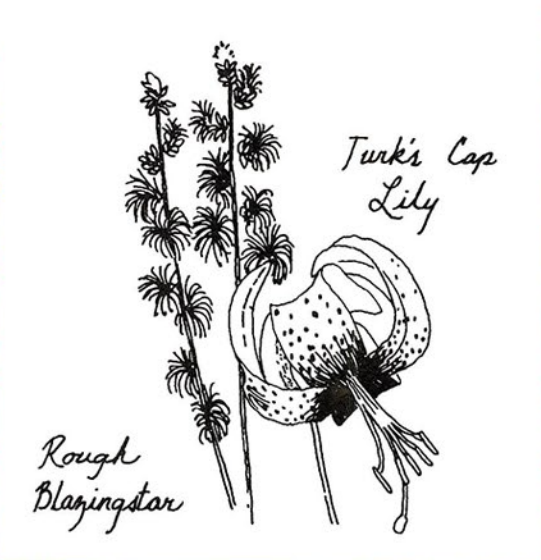




Rough Blazing Star (Native)
This interesting plant grows to 5' and flowers from July until frost.



Goldenrod (Native)
Blossoms from July till frost; ranges up to 8' tall, but is usually 3'-4'.



Coreopsis (Native)
A native perennial that blooms in June-July; 1'-3'.



Hoary Vervain (Native)
Flowers range from purple to blue to rose and appear from late June to September; usually 1'-2' tall, but can grow to 3'.



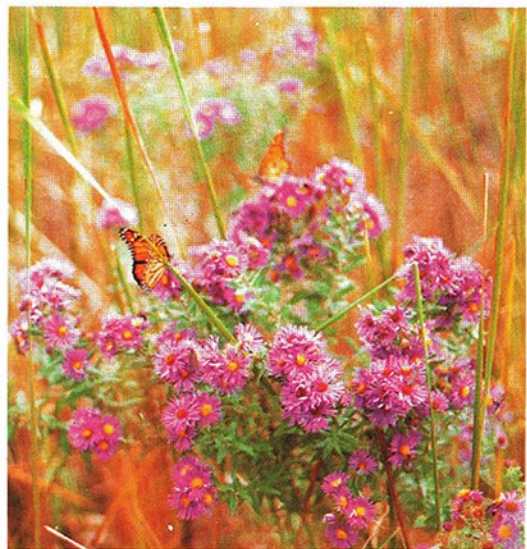
Purple Prairie Clover (Native)
A clump of Purple Prairie Clover contrasts with the yellow blossoms of the Grayhead Coneflower. Blossoms June to September.



Spiderwort (Native)
This slender low growing perennial adds splashes of blue/purple color to the right of way from June to September.



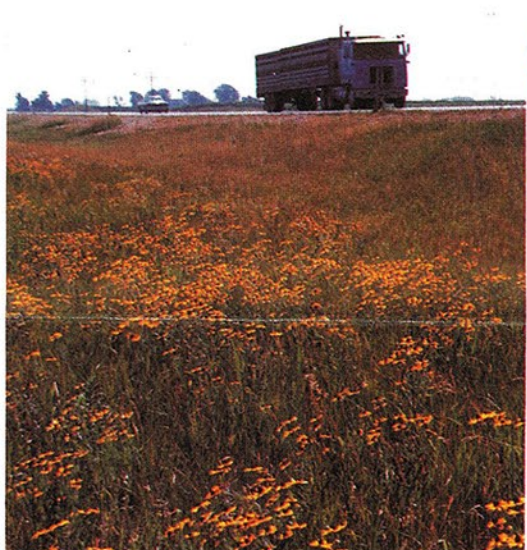
Compass Plant (Native)
Tall perennial with large vertical flat leaves with their edges oriented north and south; yellow flowers occur from July to September; 4'-8'.



New England Aster (Native)
One of the largest asters (4'), it blooms in the late summer and fall.



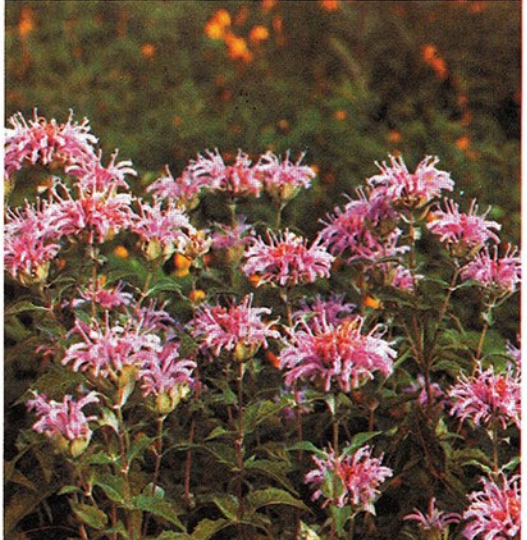
Leadplant (Native)
Shrubby perennial; silvery foliage and purple flower spikes; blooms from late May to August; 3'.



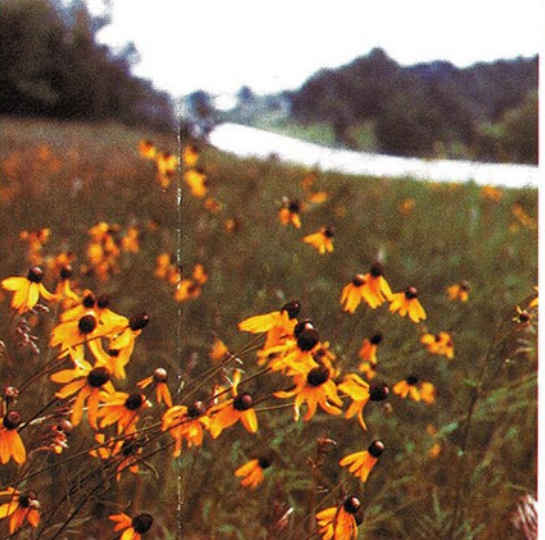
Black-eyed Susans provide a splash of yellow color along U.S. 30 between Ames and Nevada.



Butterfly Milkweed (Native)
Grows in clumps of brilliant orange flowers; blooms June-September; 1'-2'.



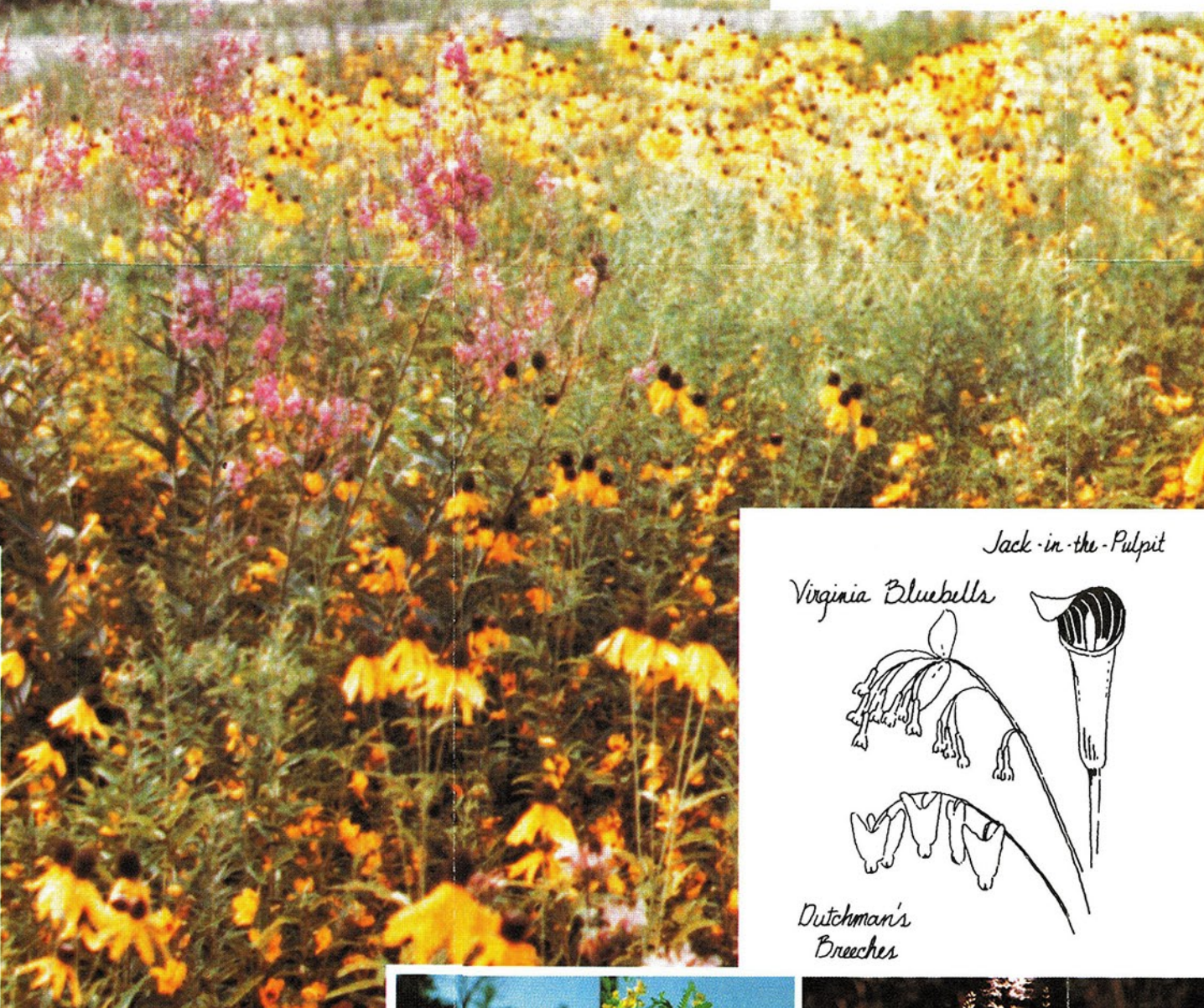
Wild Bergamont (Native)
Also called Horsemint or Bee Balm; flowers from July to September; 2'-3'.



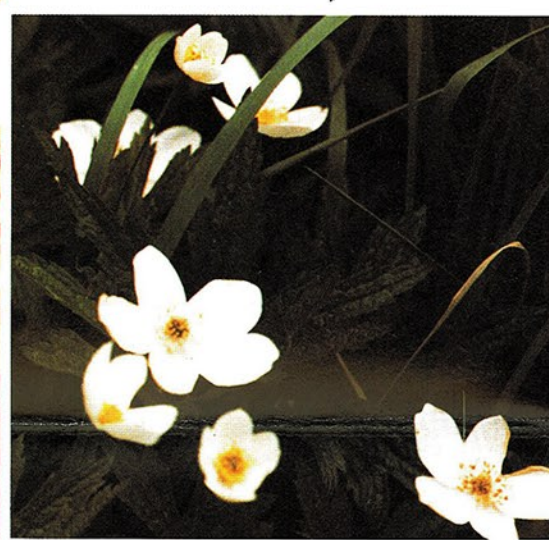
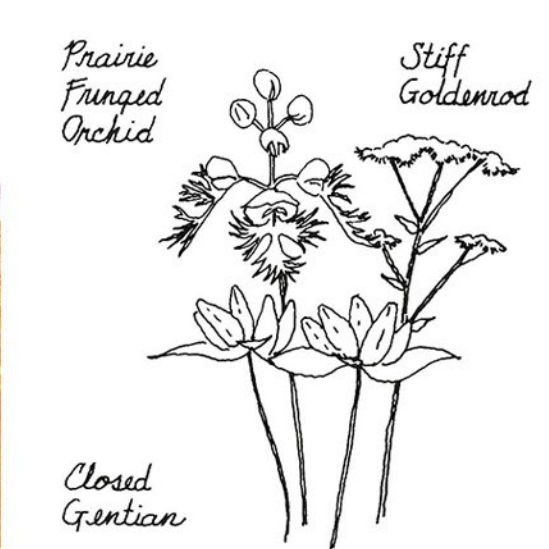
Grayhead Coneflower (Native)
Erect perennial with yellow drooping petals; blooms June through September; 3'-5'.



Purple Coneflower (Native)
Also known as Black Samson; blooms May to July; 2'-3'.

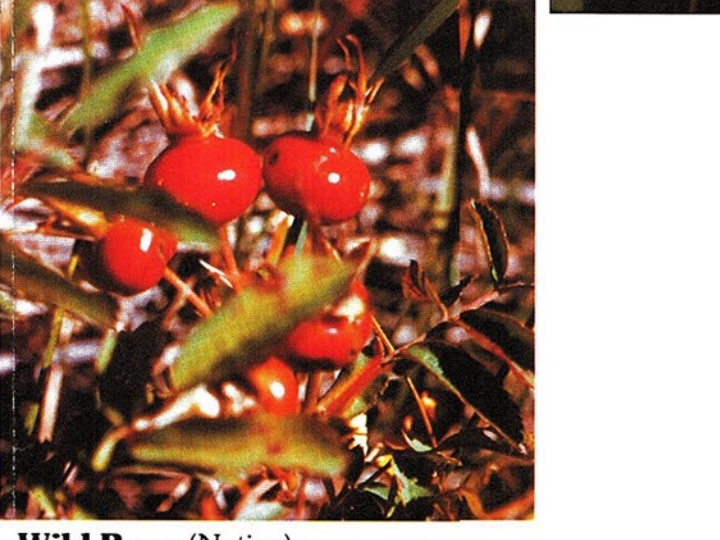
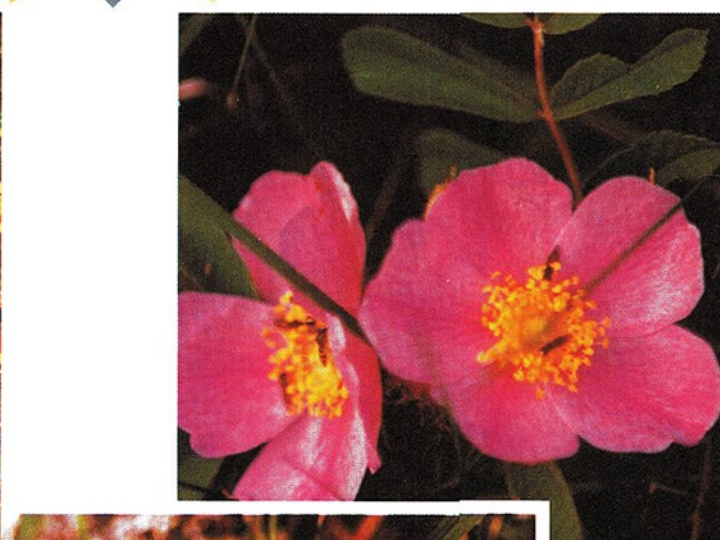


Prairie Smoke (Native)
This highly unusual seed head looks like whiffs of smoke 6"-16" above the ground; blooms May through June.

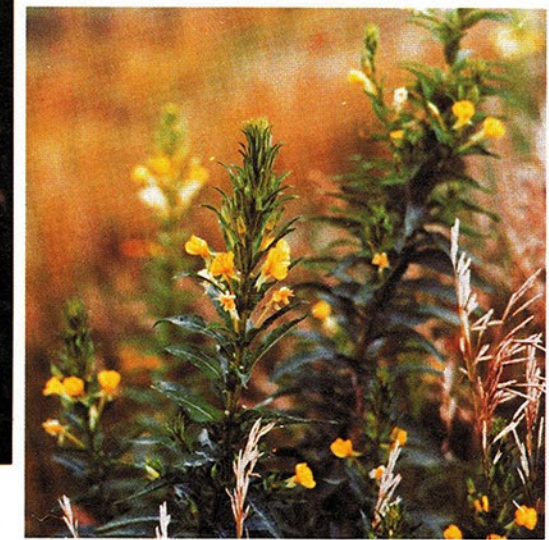


Canada Anemone (Native)
This dense low growing plant (1'-2' tall) has white blossoms that provide a stark contrast to the dark green foliage from May to July.

Discover Iowa's Roadside Flowering Plants and Grasses

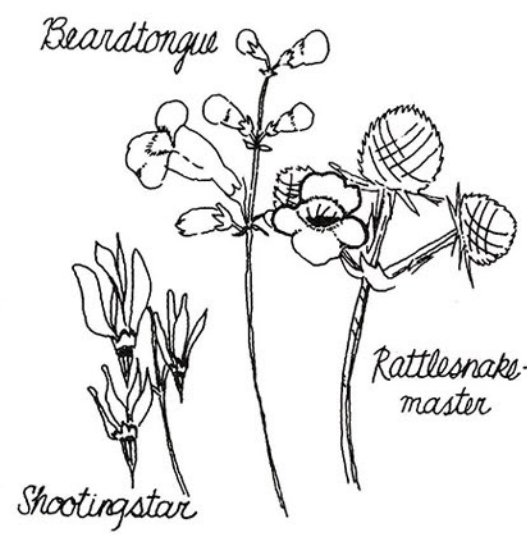


Black-eyed Susans (Native)
A short-lived plant; blooms from June to October; 3'.

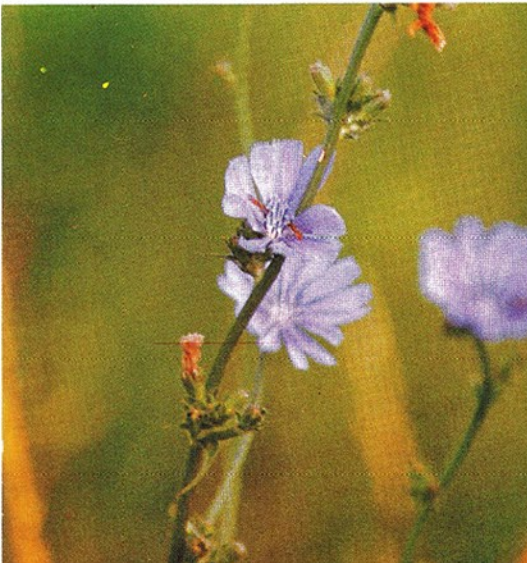


Evening Primrose (Native)
Blossoms from July through frost; each blossom lasts one day, opening abruptly in late afternoon to dusk; normally less than 4' tall, but can grow as high as 6'.

Wild Rose (Native)
Varieties range from single plants to woody shrubs up to 4' tall; red, ¼" fruit, or hips, maintain their color into the winter; the Prairie Rose is the state flower of Iowa. Blossoms in June.



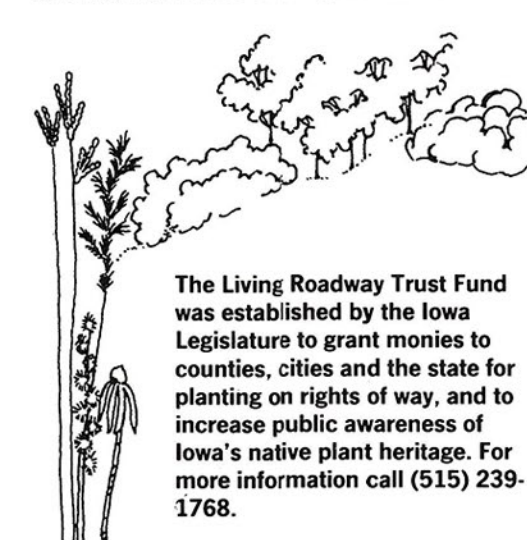
Form 610027
R-2005 Pub. 274
5101 625950



Chicory
This spindly pale-blue flowering plant that blooms from June-Oct. is commonly found growing adjacent to the edge of the road.



Here is an example of legumes (Birdsfoot Trefoil and Hairy Vetch) helping maintain the grasses' health and vigor, as shown by the rich green colors.



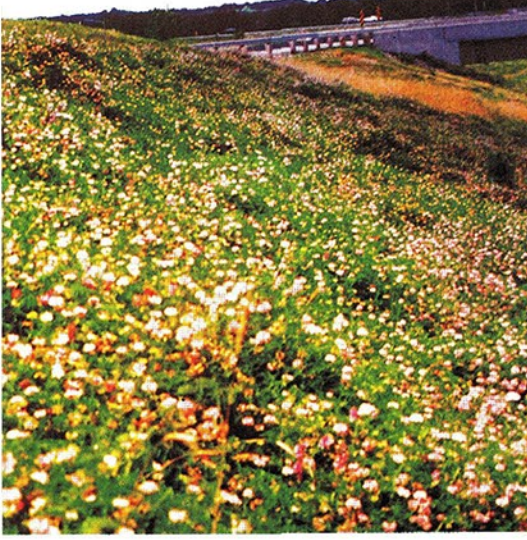
The Living Roadway Trust Fund was established by the Iowa Legislature to grant monies to counties, cities and the state for planting on rights of way, and to increase public awareness of Iowa's native plant heritage. For more information call (515) 239-1768.



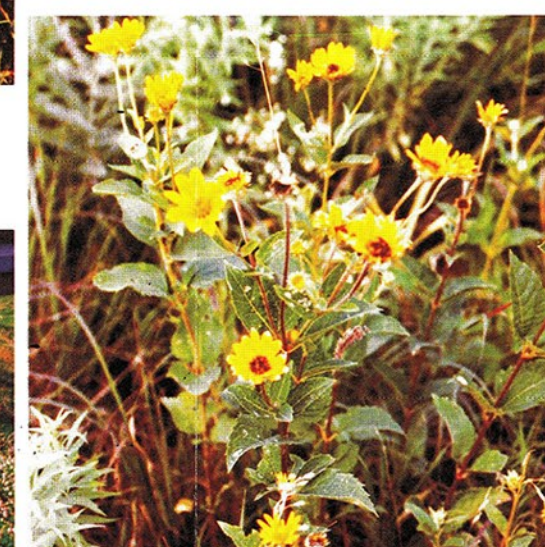
Ox-eye Daisy
Blossoms from June through August; white petals surround a yellow disk depressed in the center; blooms are 1"-2" in diameter; 1'-3'.



Canada Wild Rye (Native)
This 2'-5' tall grass differs from most of Iowa's native grasses in that it grows predominantly during the cool seasons of spring and fall.



Crownvetch
White/pink/lavender flowers; blooms from late May through August.



Sunflowers (Native)
Although one species is considered a noxious weed, most sunflowers provide desirable late summer color to the roadsides.



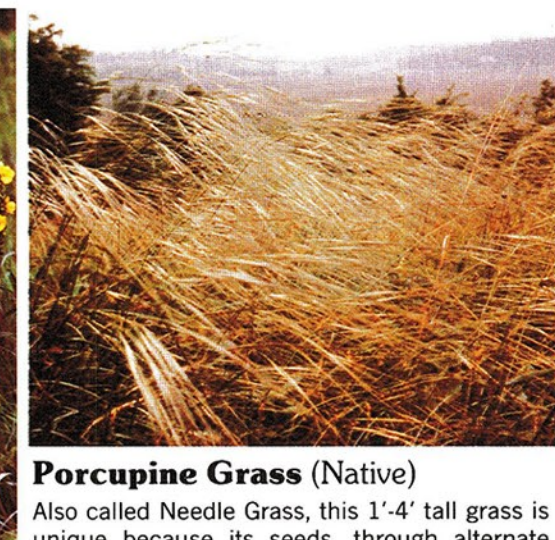
Switchgrass (Native)
A sod forming perennial which grows from 3'-6' tall; this deep rooted grass has been widely used in roadside seeding since the 1950s.



Swamp Milkweed (Native)
Pale pink to rose-purple flowers bloom in July and August; found in moist soils throughout the state; grows up to 5' tall.



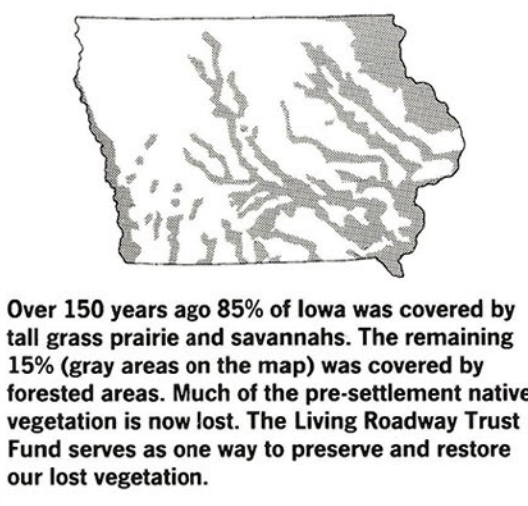
Mullein
A biennial that flowers the second year from June to late summer; flower stalks that brown after curing often remain the following year; 2'-8'.



Porcupine Grass (Native)
Also called Needle Grass, this 1'-4' tall grass is unique because its seeds, through alternate wetting and drying action, will "screw" themselves into the ground.



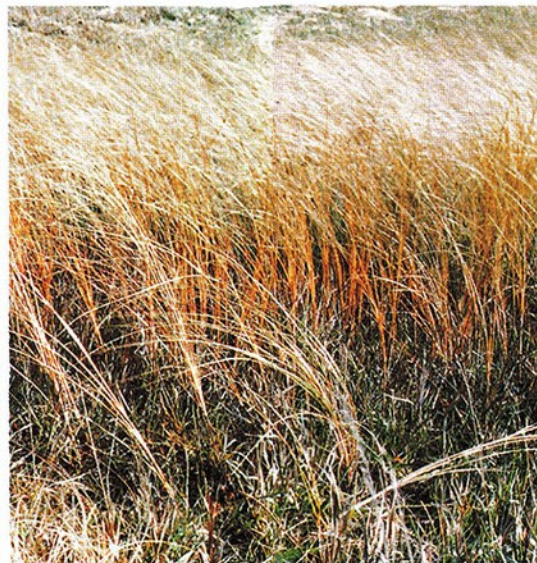
Big Bluestem (Native)
Also called Turkey Foot; leaves are green with a bluish cast; grows to 8' tall; it has a beautiful reddish-bronze fall color.



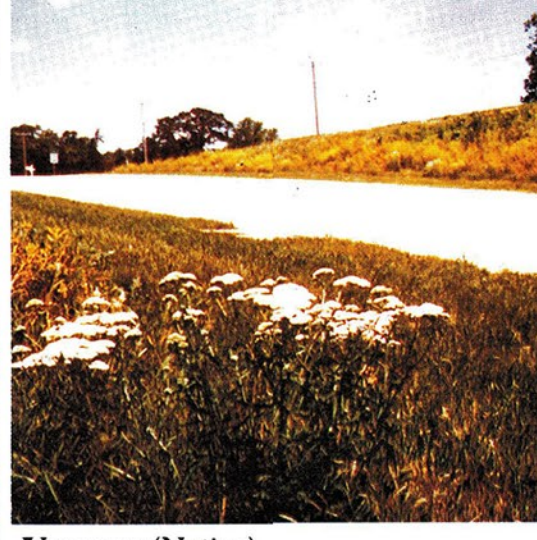
Over 150 years ago 85% of Iowa was covered by tall grass prairie and savannahs. The remaining 15% (gray areas on the map) was covered by forested areas. Much of the pre-settlement native vegetation is now lost. The Living Roadway Trust Fund serves as one way to preserve and restore our lost vegetation.



Cattails (Native)
Found in wet, poorly drained soils.



Prairie Cord Grass (Native)
Ranging in height from 4'-10', this dense sod former is found in wet heavy soils.



Yarrow (Native)
Perennial with tiny white flowers in tight flat heads; blooms June through frost; 2'.



Indiangrass (Native)
Golden, plume-like head in September; 3'-8'.



Little Bluestem (Native)
This relative of Big Bluestem grows to a height of 1'-3' and provides a reddish-brown fall color background for its silvery seed heads.



Day-lily
This escapee from cultivated gardens has flourished in Iowa's roadsides and provides banks of orange color from June-August.



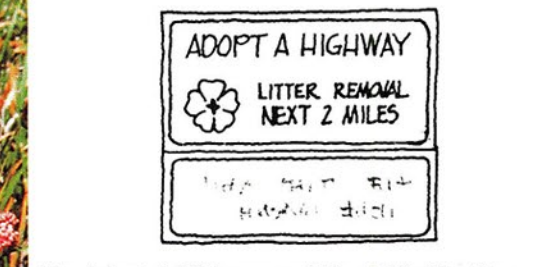
Ironweed (Native)
A brilliantly colored late-summer/fall blooming plant, Ironweed grows from 2'-5' tall.



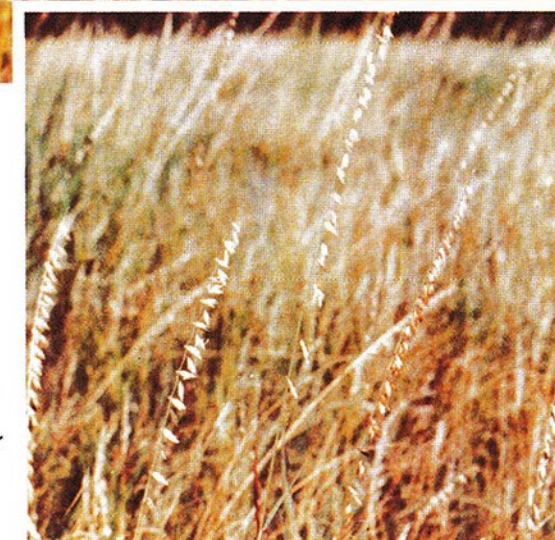
Daisy Fleabane (Native)
Blossoms from May to October; ½" flowers differ from asters in that the rays are the same width along their entire length; 5'.



Prairie Sage (Native)
Noted for its silvery foliage, this plant can grow up to heights of 40'.



The Adopt-A-Highway and Roadside Planting Sponsorship programs allow groups to select a portion of right of way for removal of litter and/or to plant trees, shrubs, wildflowers and grasses. For more information about these programs call (515) 239-1396.



Sideoats Grama (Native)
The distinctive seeding characteristic of this 1'-3' tall grass makes it easily identifiable. This grass is usually found in drier sites, rocky areas, and steep slopes.



Yellow Goatsbeard
Also known as Salsify or Oysterplant; yellow flowers that close at midday; seedhead is a large white puffball similar to its smaller relative, the common lawn dandelion; 1'-3'.



Reed Canarygrass (Native)
Suited for wetland, stream banks, dikes, etc. to furnish food, cover, and nesting material for puddle ducks, geese and upland game birds.